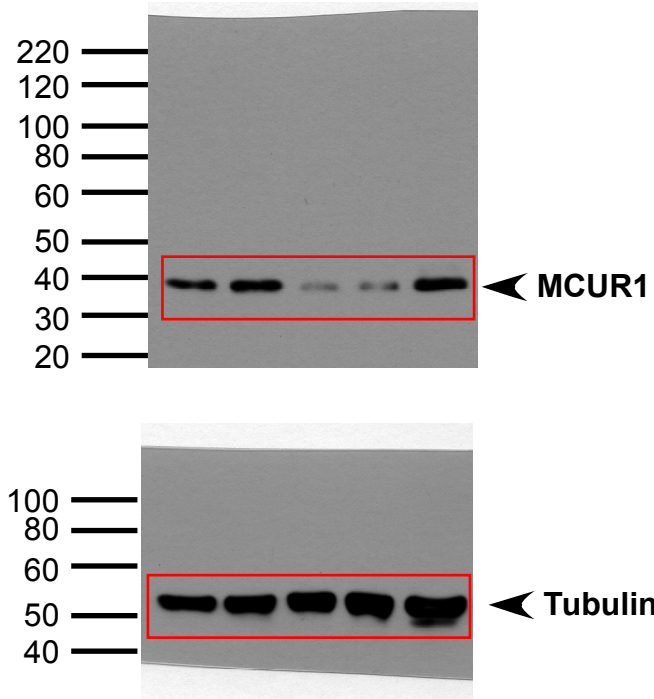
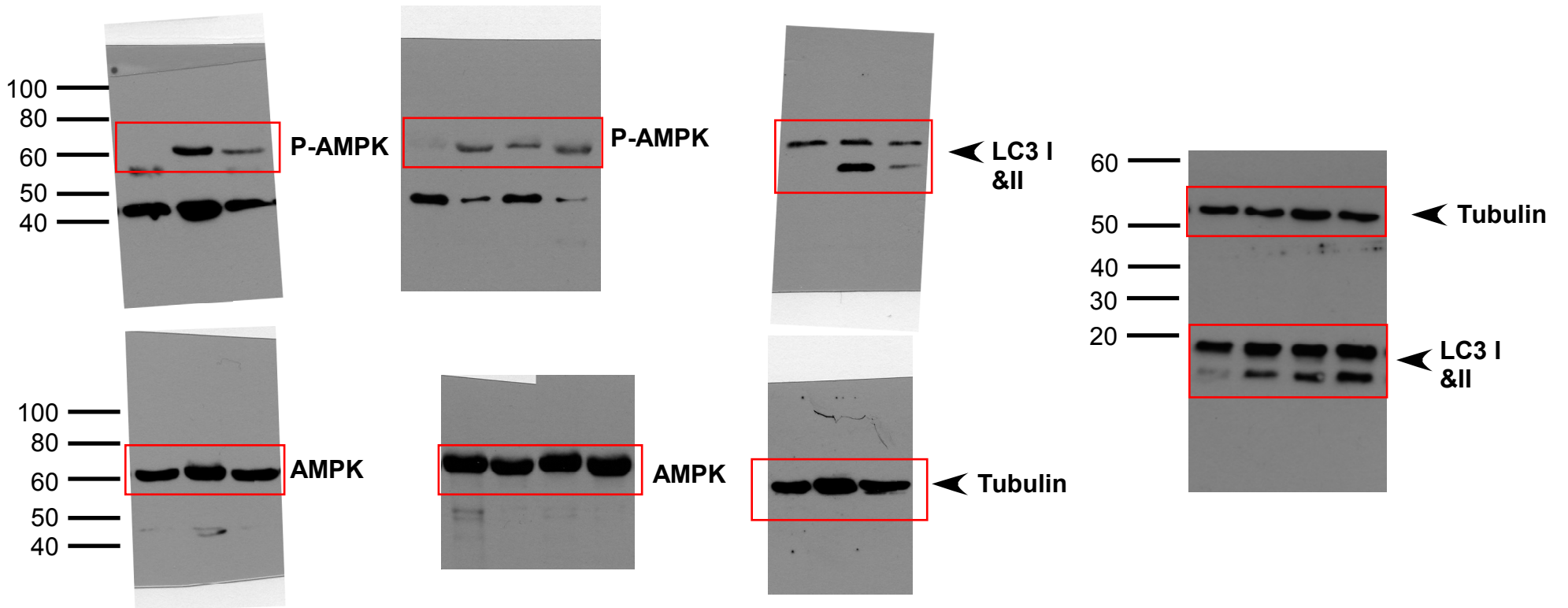


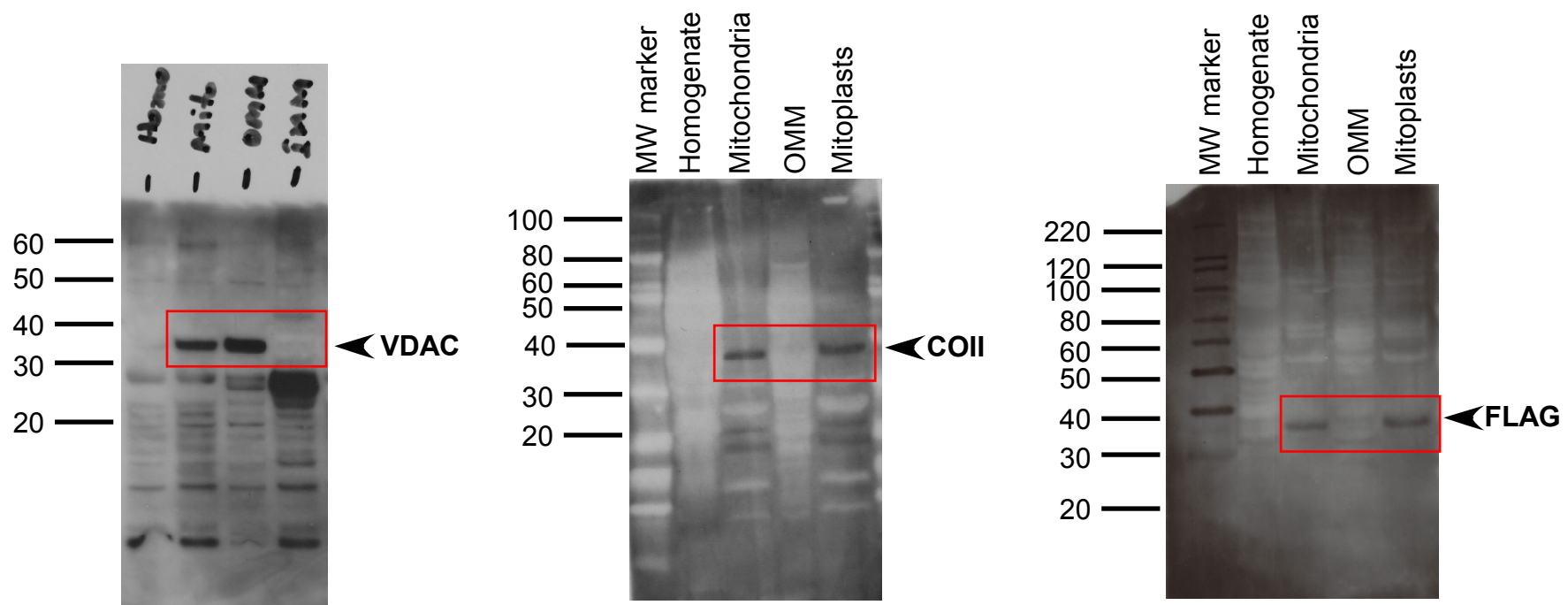
Related to Figure 1f



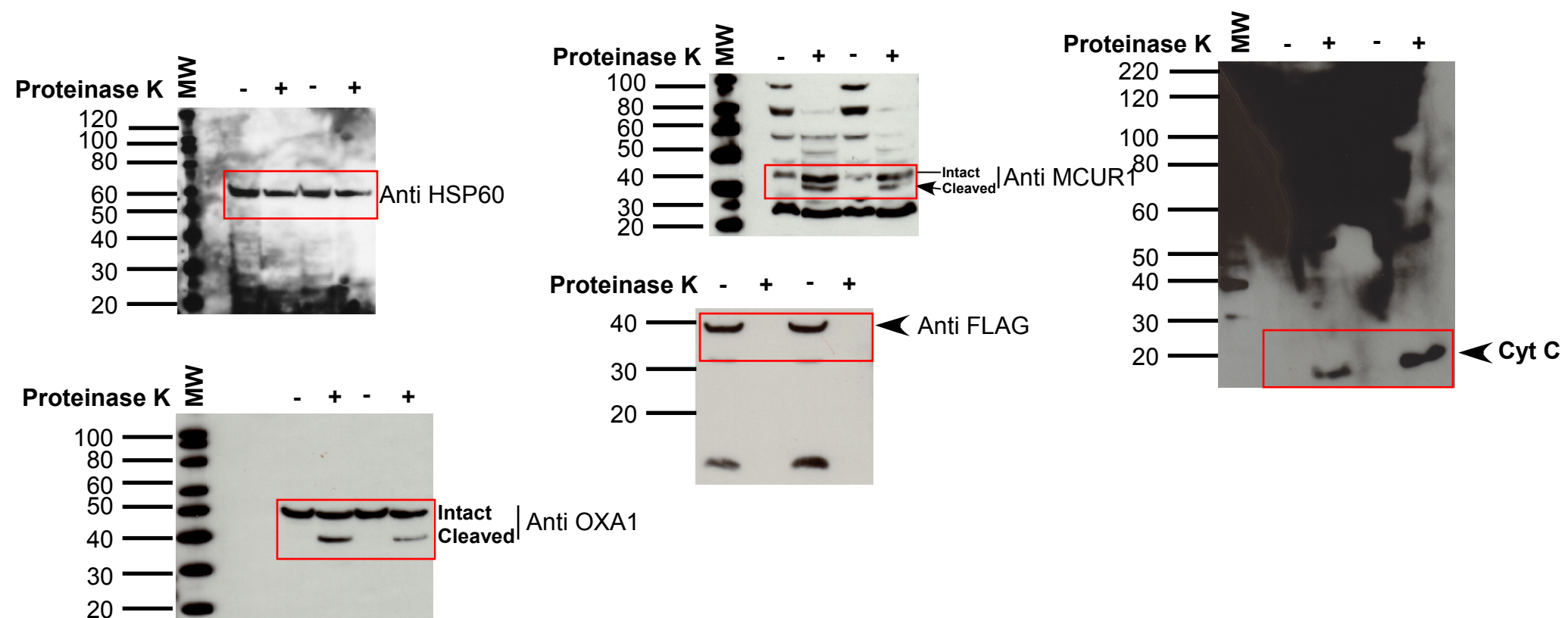
Related to Figure 5d,e,f,g



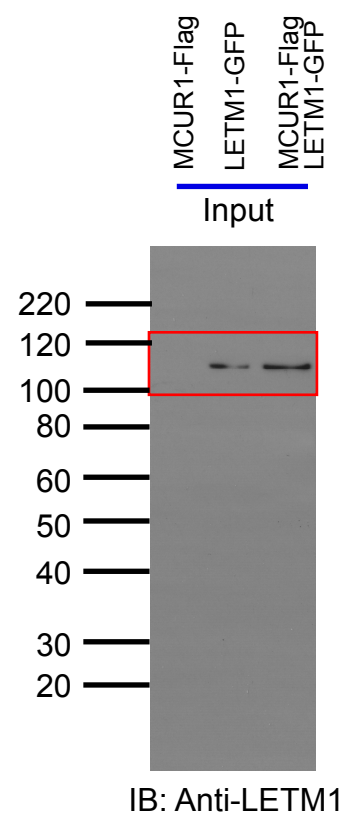
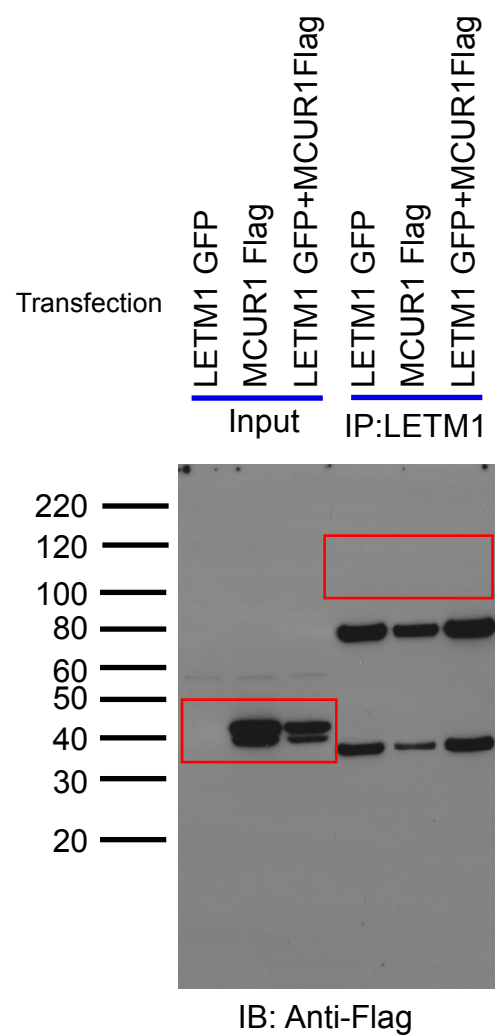
Related to Figure 3c



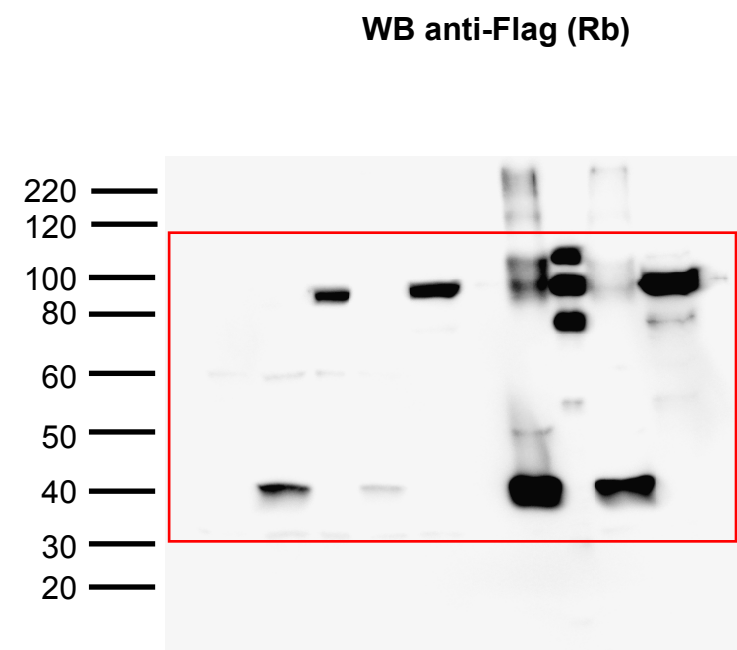
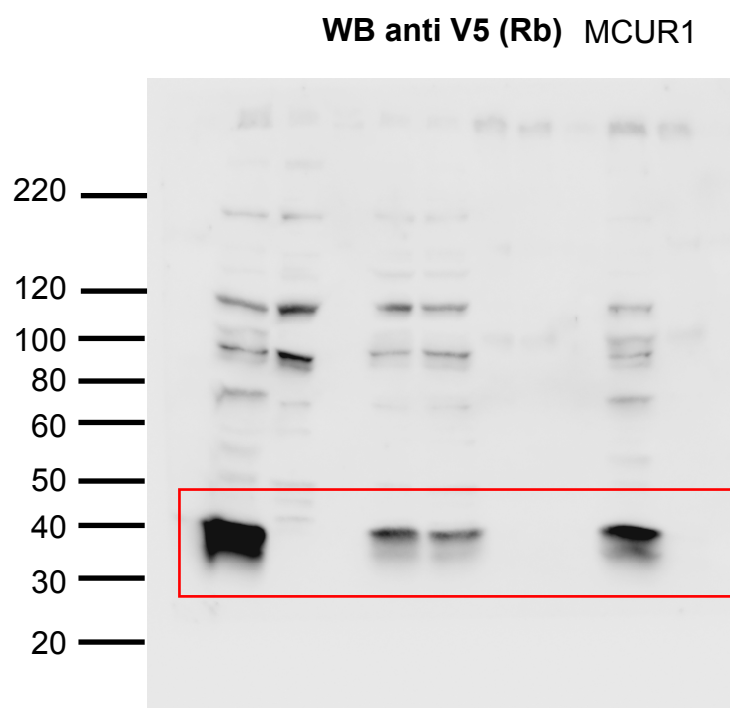
Related to Figure 3d



Related to Figure 3g



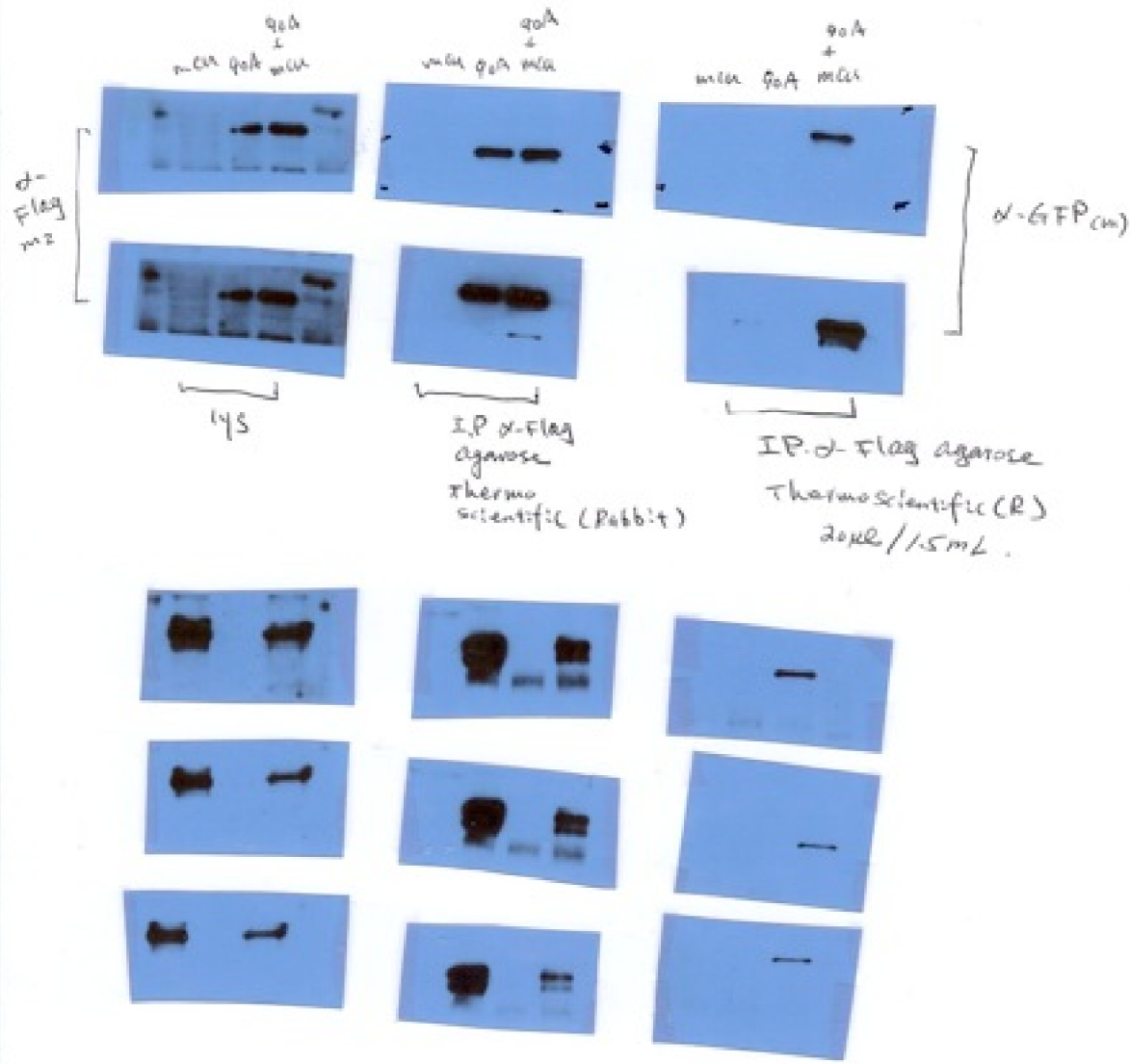
Related to Figure 3h



Related to Figure 3e

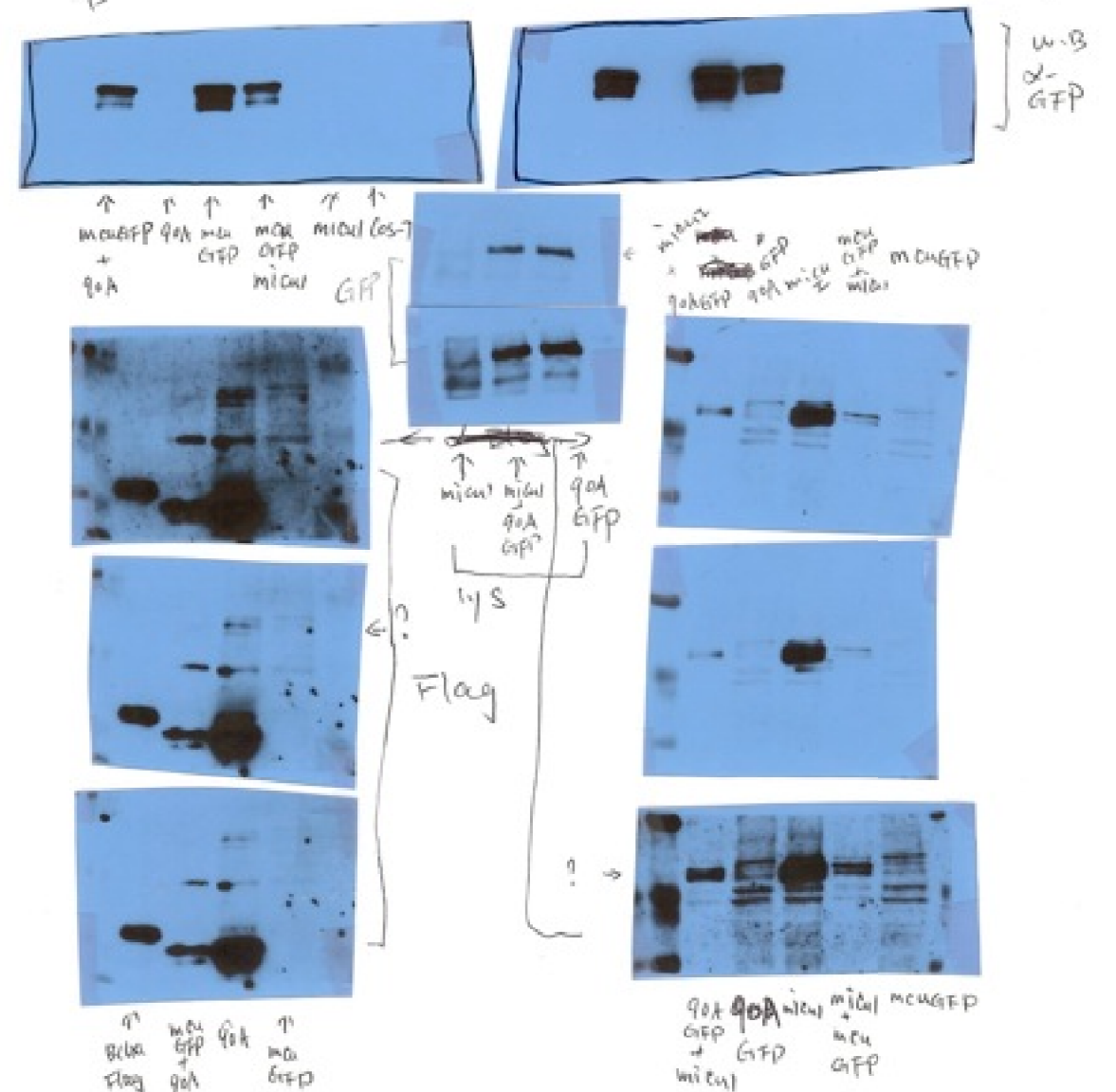
10/17 - 21/11

- transfection q0A-Flag, miu-GFP plasmid into cos-7 cells
90% confluence cells.
- ~~single~~ single transfection: 15µg DNA (13.5µl lipofectamine 2000)
- co-transfection: 7.5µg + 7.5µg DNA (13.5µl lipofectamine 2000)
- 20h of transfection, cells were harvest. lysate in 1xPBS
1/5 Triton X100, protease inhibitor (Sigma)



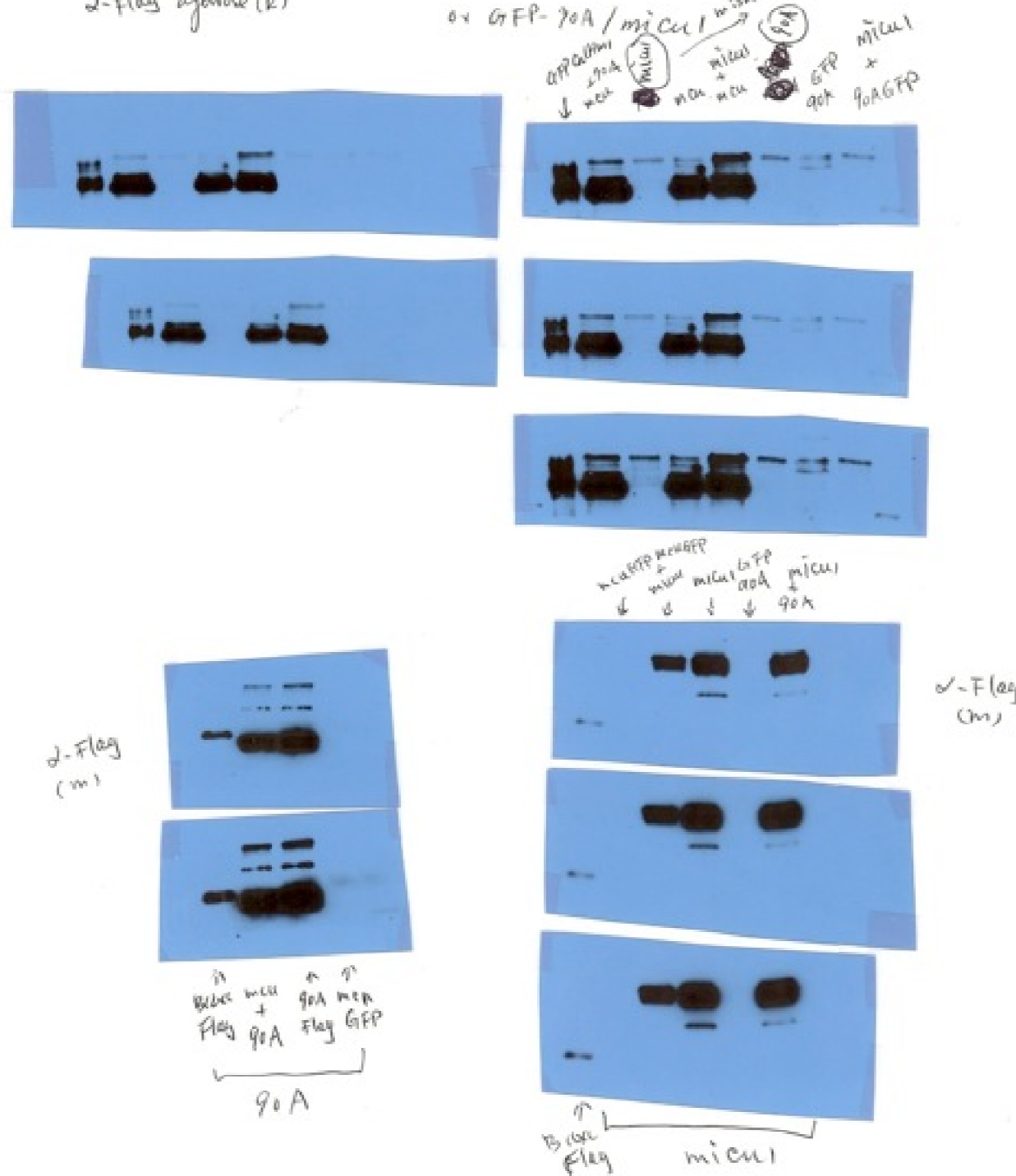
Related to Figure 3f

- transfect q0A-Flag / miu-GFP
miu1 / miu GFP } into cos-7 cells
- 33µg DNA each + 0.9x lipofectamine 2000 (33µg/30µl - single)
(66µg/60µl - co-transfection)
- 20µg total cellular lysate for W.B using α-GFP (m) all signal.

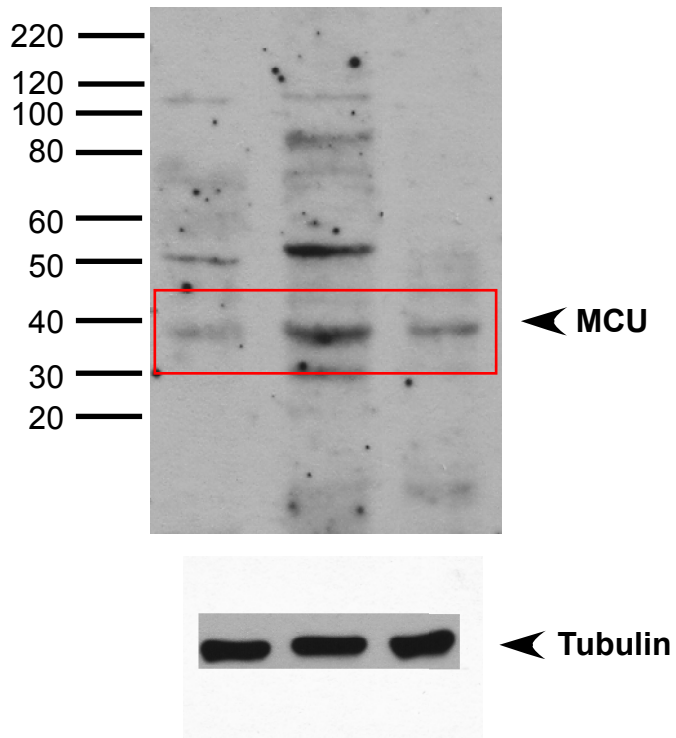


Related to Figure 3f

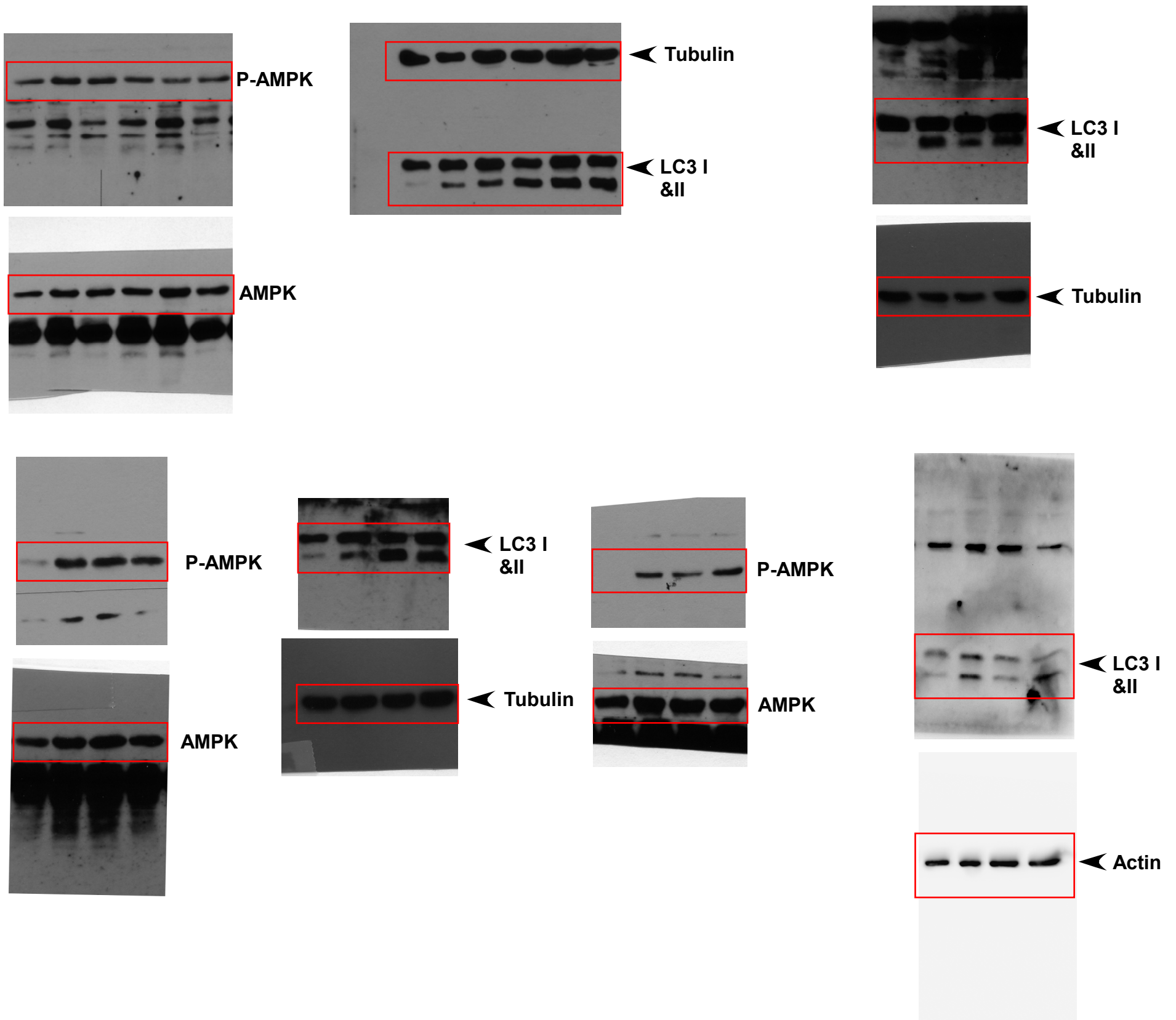
- IP: cos-7 transfected using GFP-miu/q0A or GFP miu/miu1
α-Flag agarose (R)



Related to Supplementary Fig 2k



Related to Supplementary Fig 5c.d.e.f.h.i & k

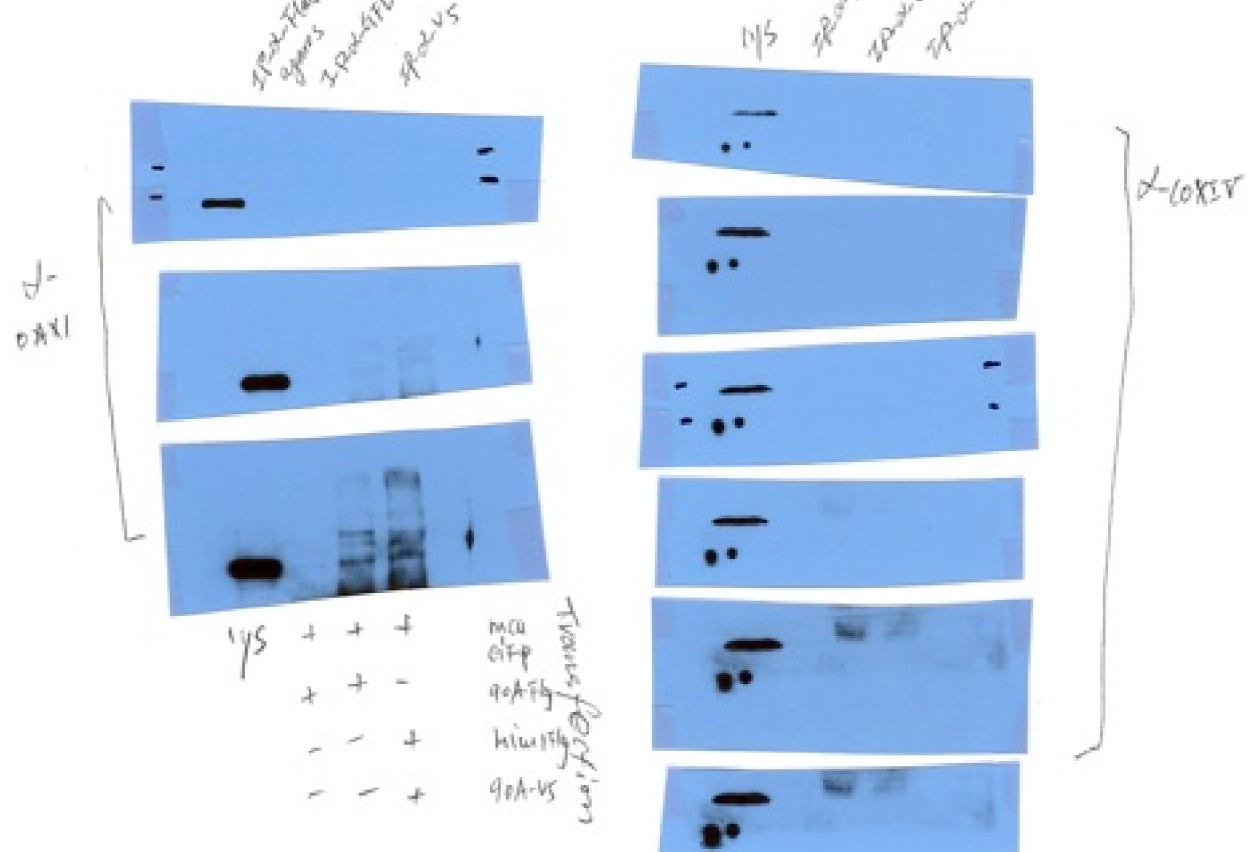


Related to Supplementary Fig 4a,b & C

2/16-20/12:

- Use last year co-IP lysate, loaded equal amount of lysate

- w.B. use ~~α-DAI~~ α-DAI, COXIV ~~α-DAI~~

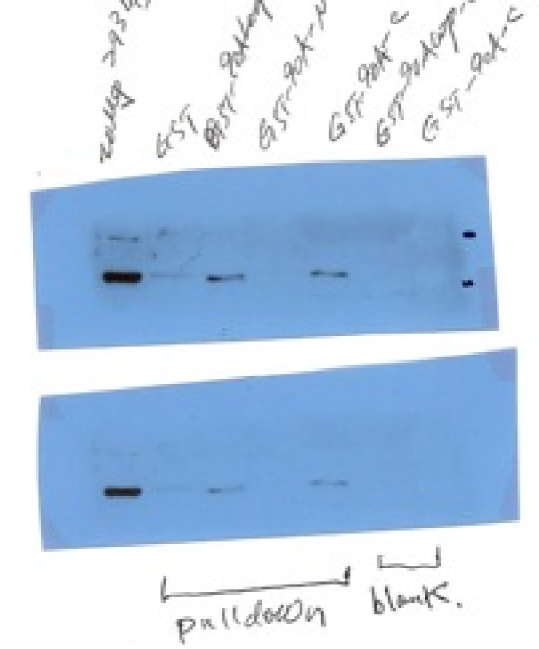


+	+	+	micu	+	+	+	transfection
+	+	-	GoA	+	+	+	
-	-	+	micu	+	+	+	
-	-	+	GoA-V5	-	-	+	

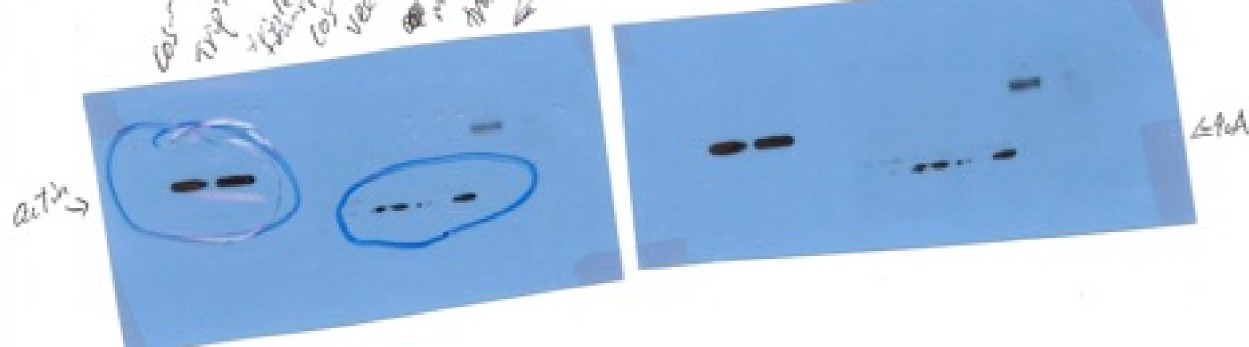
4/12-6/12:

- 1775 Flask 293 all/pull down using 200ug GST fusion protein in 1ml Rcn solution for 2h.

- total elution was loaded onto gel for w.B.



- Test GoA-V5 expression level in transfected COS-7 cells



4/17-23/11:

- Cos-7 cells were transfected using micu-Flag, GoA-V5, micu-GFP

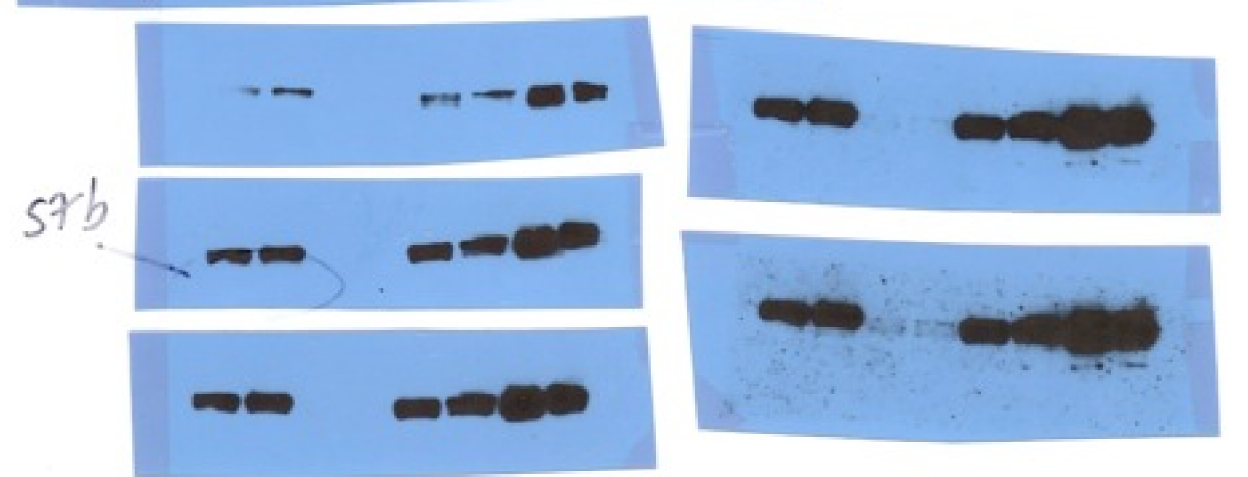
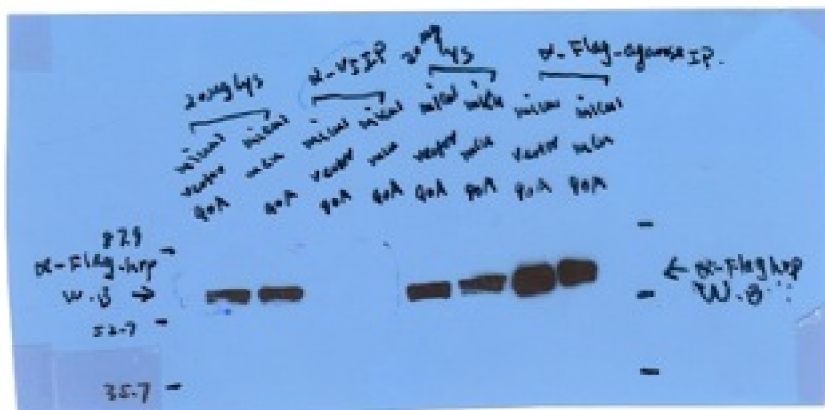
- after 20h of transfection, harvest cells and lysate in XPBS

- IP with α-V5 (Covington) or Flag-agarose (Novus) (1:500)

- 4°C O/N.

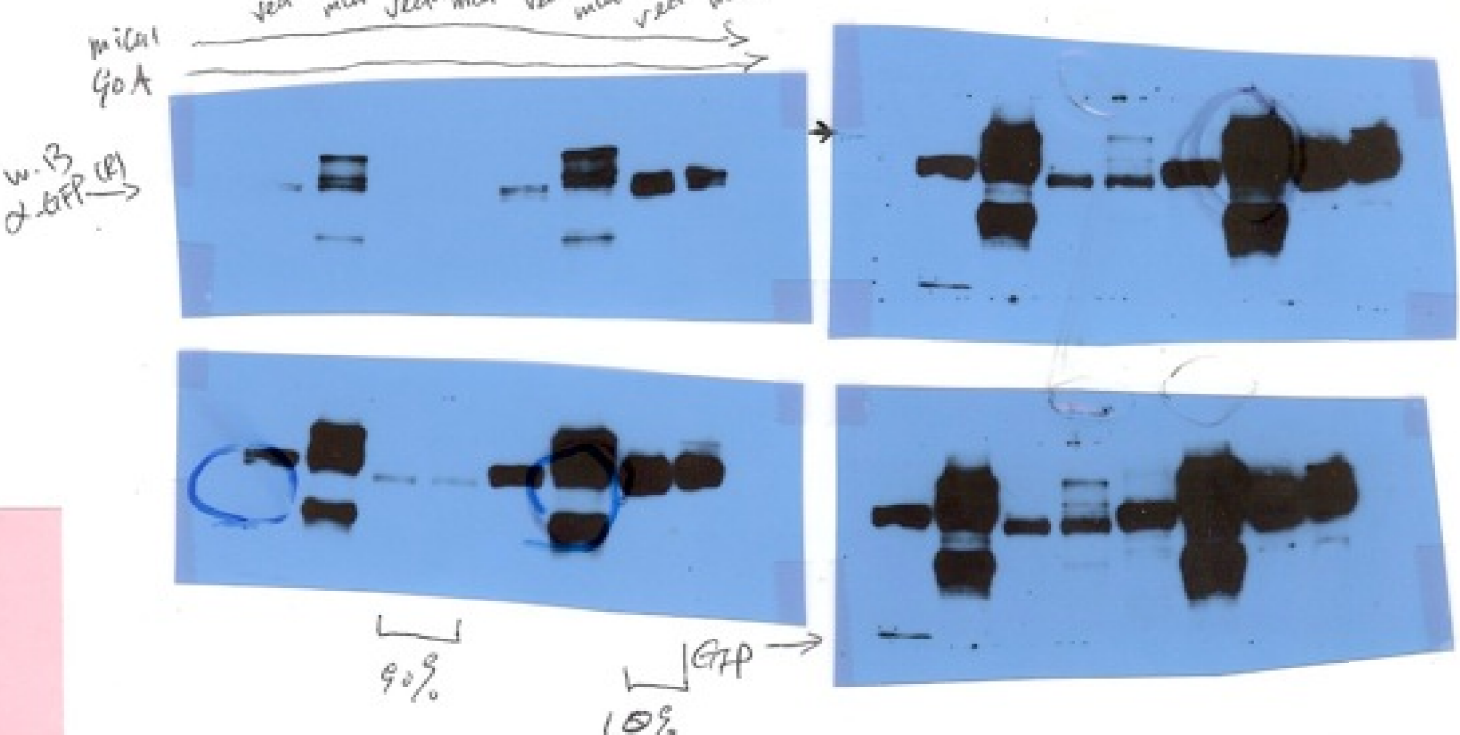
- Run SDS-PAGE for w.B.

- α-V5 or α-Flag-hrp @

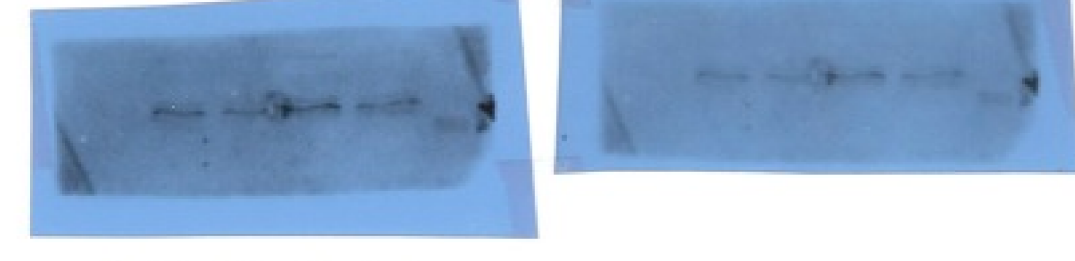


- stripe Flag-w.B. membrane using Thermo-fisher buffer.

- Blot using α-GFP (R) Ab 1:1000, cell signal



micu →
GoA →



↑ V micu V micu
lost 1/5 IP

