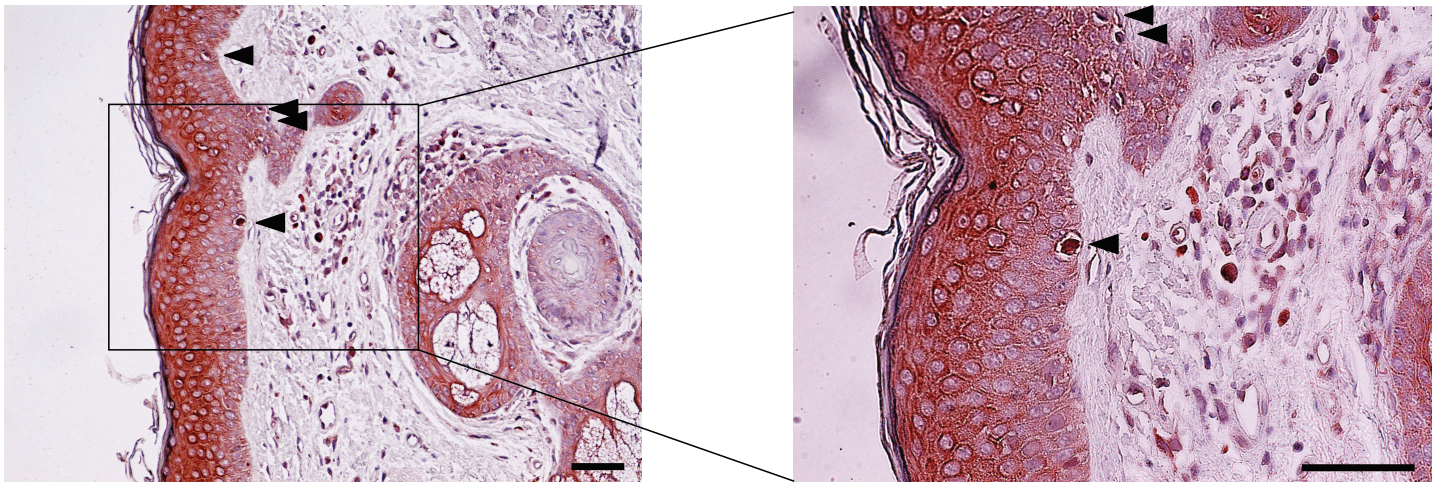


### Supplementary Table 1. List of melanoma patient specimens used in this study and the intensity of ASC staining

Patients	Gender	Age	Type	Origin	Intensity of ASC staining <sup>1</sup>
MF347	Female	55	Primary	Skin	++
MF348	Female	86	Primary	Skin	+
MB947p	Female	65	Primary	Skin	+
MF564	Male	87	Primary	Skin	+
MF565	Male	76	Primary	Skin	+
MF566	Male	35	Primary	Skin	++
MB947m	Female	65	Metastasis	Lymph node	+
MB952	Female	77	Metastasis	Lymph node	-
82909	Male	56	Metastasis	Adrenal gland	+/-
MF567	Male	60	Metastasis	Skin	-
MF568	Male	64	Metastasis	Skin	+/-
MF569	Male	62	Metastasis	Skin	+

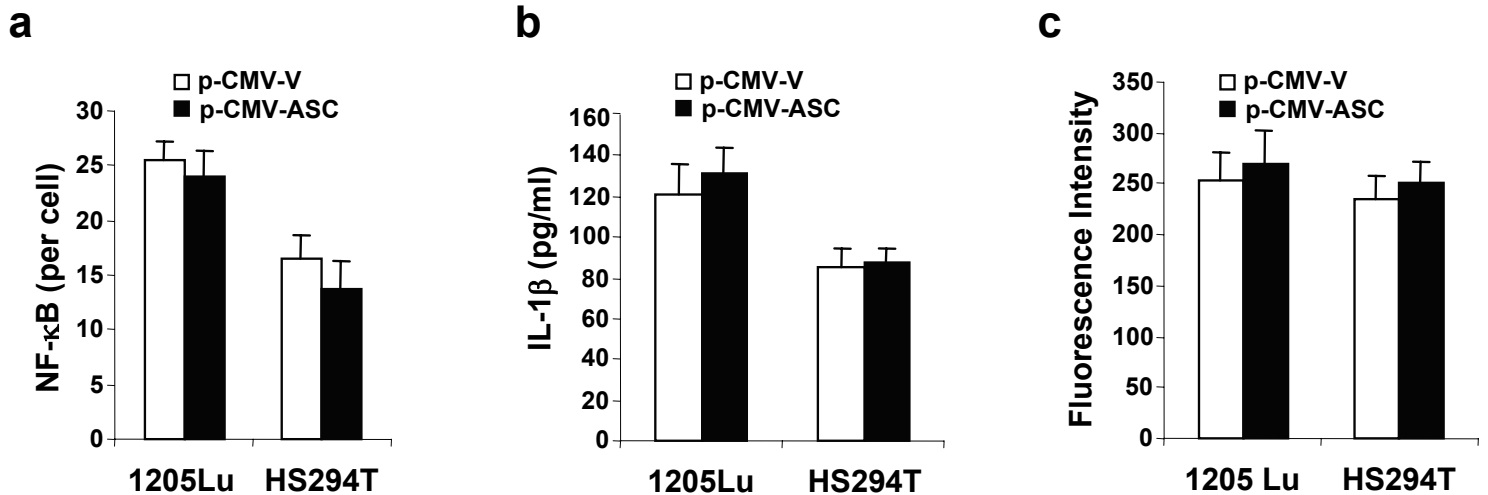
<sup>1</sup>ASC staining was reviewed by 2 observers. ++, strongly positive; +, positive; +/-, weakly positive; -, slightly positive or undetectable

## Supplementary Figure 1



**Figure 1. ASC expression in melanocytes.** Representative staining of human skin with ASC. Arrows depict positively stained melanocytes. Bar=100  $\mu\text{m}$ .

## Supplementary Figure 2



**Supplementary Figure 2. NF-κB activity, IL-1b secretion and caspase-1 activity in metastatic melanoma cells after ASC overexpression.** (a) NF-κB activity in melanoma cells after transfection with pCMV-GFP-V empty vector (pCMV-V) or pCMV-GFP-ASC vector (pCMV-ASC). (b) IL-1β secretion in 24 hours in cells after transfection with pCMV-V or pCMV-ASC. Data represent mean + S.E. (n=3). (c) Caspase-1 activity in cells after transfection with pCMV-V or pCMV-ASC. Data represent mean + S.E. (n=3).