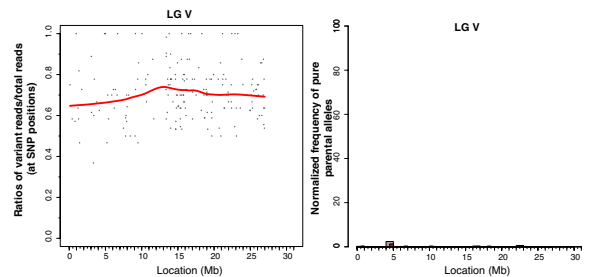
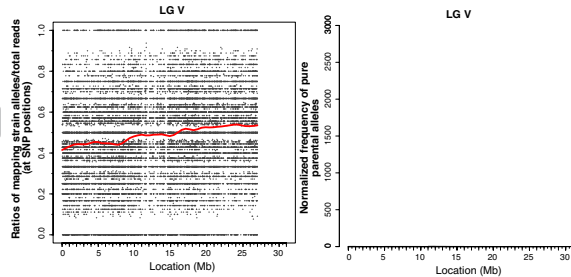


*Arabidopsis*: polymorphic mapping

*Arabidopsis*: variant discovery mapping

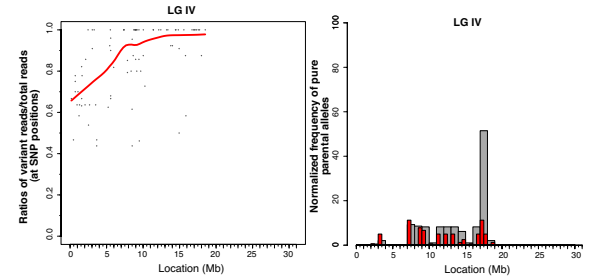
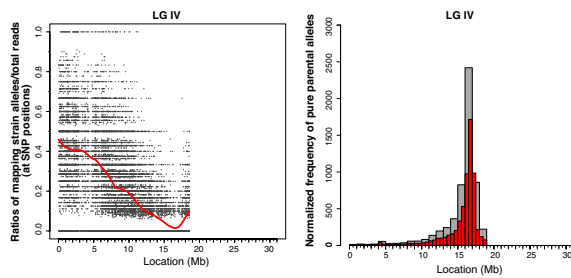
Unlinked chromosome

LG V



Linked chromosome

LG IV



**Figure S5** Multi-organism *Variant Discovery Mapping* support. CloudMap natively supports the variant discovery mapping method for *Arabidopsis* as shown here for data from Schneeberger *et al.* 2009. Users must provide a simple configuration file for organisms other than *C. elegans* and *Arabidopsis*. Configuration files and instructions for other organism support are provided at <http://usegalaxy.org/cloudmap>