

RPI1

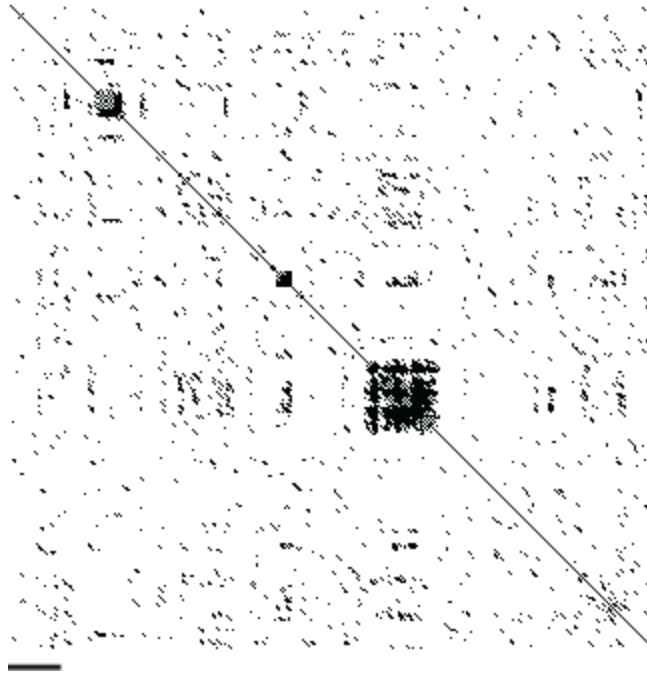


Figure S5 *RPI1* contains intragenic repeats. Dot plot analysis of the S288c allele of *RPI1* nucleotide sequence compared against itself. Repeat regions produce a characteristic box pattern. The horizontal bar represents 100 nt. The plot was generated using <http://www.vivo.colostate.edu/molkit/dnadot/> with a windows size of 9 and a mismatch limit of 2.