

**Table W1.** Specific shRNA Silencing Sequences.

Number*	Target Gene	Sequence	TRC Number <sup>†</sup>
I	PACE4	CGGGTCATAAAGTTAGCCATT	TRCN0000075248
II		GCGTGGATGAACCTGAGAAAT	TRCN0000075249
<b>III</b>		CCTGGAAGATTACTACCATTT	TRCN0000075250
IV		CCACGATATGATGCCAGCAAT	TRCN0000075251
V		GAGTGCATTCACTGTGCGAAA	TRCN0000075252
<b>VI</b>	Furin	CCTGTCCCTCTAAAGCAATAA	TRCN0000075238
VII		CCGCCTTTATCAAAGACCAGA	TRCN0000075239
VIII		CAGTATCTACACGCTGTCCAT	TRCN0000075240
IX		GAGTGGGTCCCTAGAGATTGAA	TRCN0000075241
X		CCACATGACTACTCCGCAGAT	TRCN0000075242
XI	PC7	GCCTCCATTATCCATTCCCAA	TRCN0000072393
XII		GCACTATCAGATCAATGACAT	TRCN0000072394
<b>XIII</b>		CGCATGCCTTTCTATGCAGAA	TRCN0000072395
XIV		CTGGACATCTGTCCCTTACTT	TRCN0000072396
XV		CCAGGACATTGCACCCAACATA	TRCN0000072397

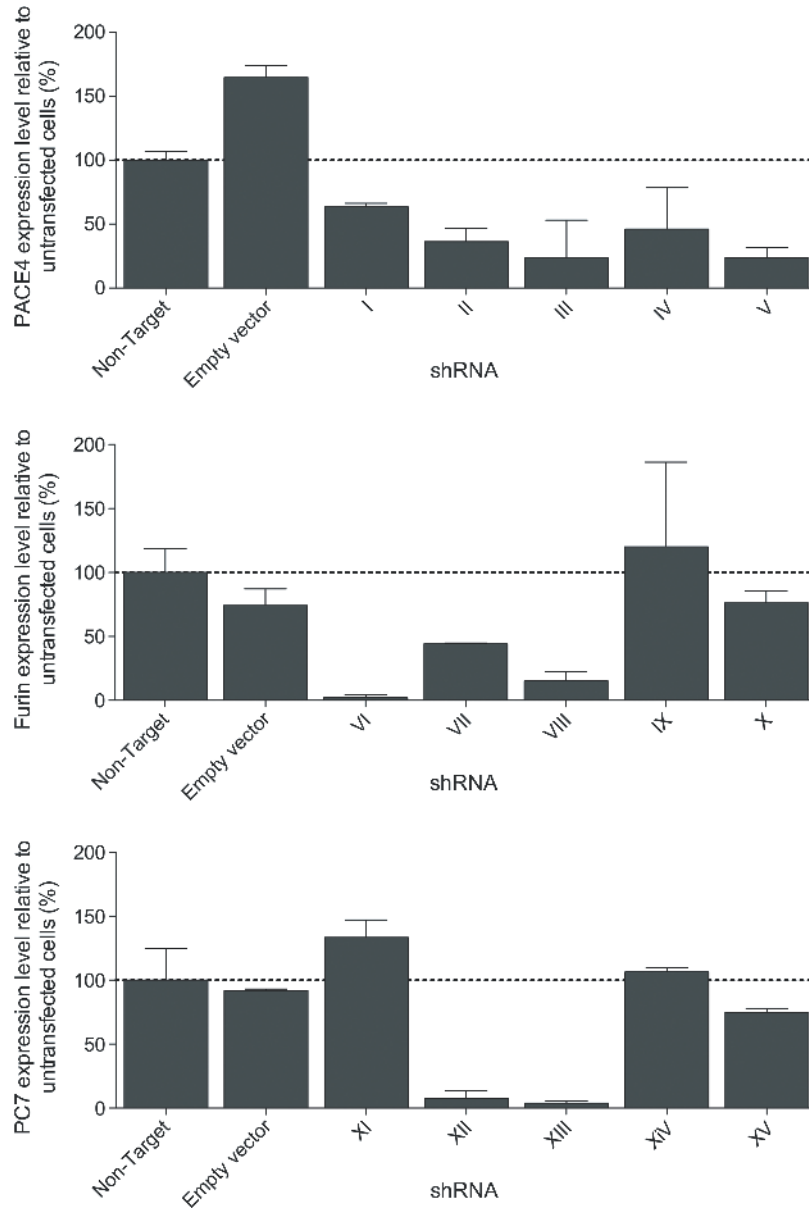
shRNAs in **bold** are the ones selected for this study because of their higher efficiency.

\*shRNA numbers used for Figure W1.

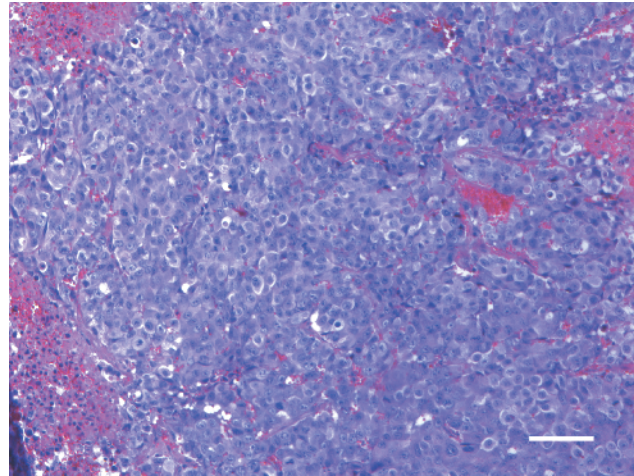
<sup>†</sup>TRC number from Sigma–Aldrich for human genes.

**Table W2.** qPCR Primer Sequences.

Gene	Protein	Primer Sequences	Product Size (bp)
<i>ACTB</i>	β-Actin	Forward: 5'-CAGAGCCTCGCCTTTGCCGATC-3' Reverse: 5'-CGATGCCGTGCTCGATGGGG-3'	280
<i>PCSK3</i>	Furin	Forward: 5'-GTGGCGACCTGGCCATCCAC-3' Reverse: 5'-AGGTACGGGCAGCCCCTCAG-3'	251
<i>PCSK6</i>	PACE4	Forward: 5'-CACCTGCTAGTGAAGACATCC-3' Reverse: 5'-AACGAGAGCTTCTGCGTCCAC-3'	122
<i>PCSK7</i>	PC7	Forward: 5'-GGGTCACCAACGAGGCAGGC-3' Reverse: 5'-CCCCCAGCATCGCACAGTGG-3'	391
<i>EGFR</i>	EGFR	Forward: 5'-CCTGGTCTGGAAGTACGCAG-3' Reverse: 5'-GCGATGGACGGGATCTTAGG-3'	126



**Figure W1.** shRNA efficiency screening on DU145 cells. Northern blot hybridization densitometry of furin, PACE4, and PC7 mRNA relative to 18S RNA on total mRNA extracted from DU145 transfectants for the five shRNAs targeting furin (top), PACE4 (middle), and PC7 (bottom). Radioactive probes used are the same as in [10] (for shRNA numbers, refer to Table W1).



**Figure W2.** H&E staining on LNCaP tumors. H&E staining confirms the high vascularization of LNCaP tumor (NT on this picture), as multiple erythrocytes can be observed (red cells lacking purple nucleus) among the tumor cells within the tumors. Scale bar represents 100  $\mu\text{m}$ .