

Supplementary information, Figure S1

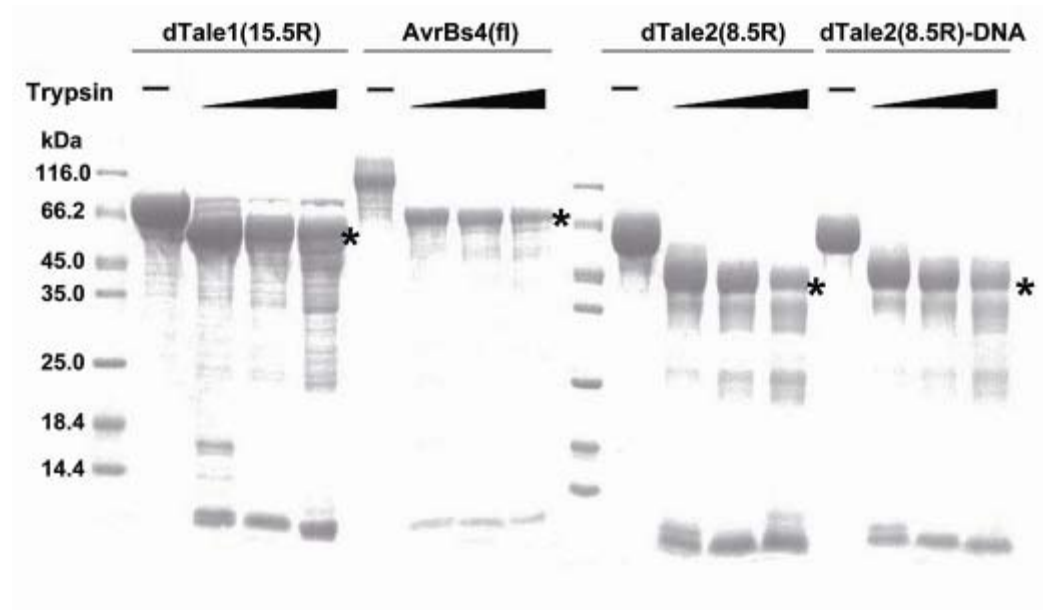


Figure S1 The limited proteolysis analysis of TALE proteins. The reaction was carried out with gradient concentrations of trypsin enzyme (0.025, 0.05, 0.1 µg/µL) on different purified TALE proteins (dTale1 (148-15.5R-1004), AvrBs4 (1-17.5R-1160), dTale2 (148-8.5R-766)) (about 5 µg/µL). SDS-PAGE analysis of trypsin-treated proteins shows stable fragments in TALEs. The stars indicate the stable fragments including the central repeats domain.