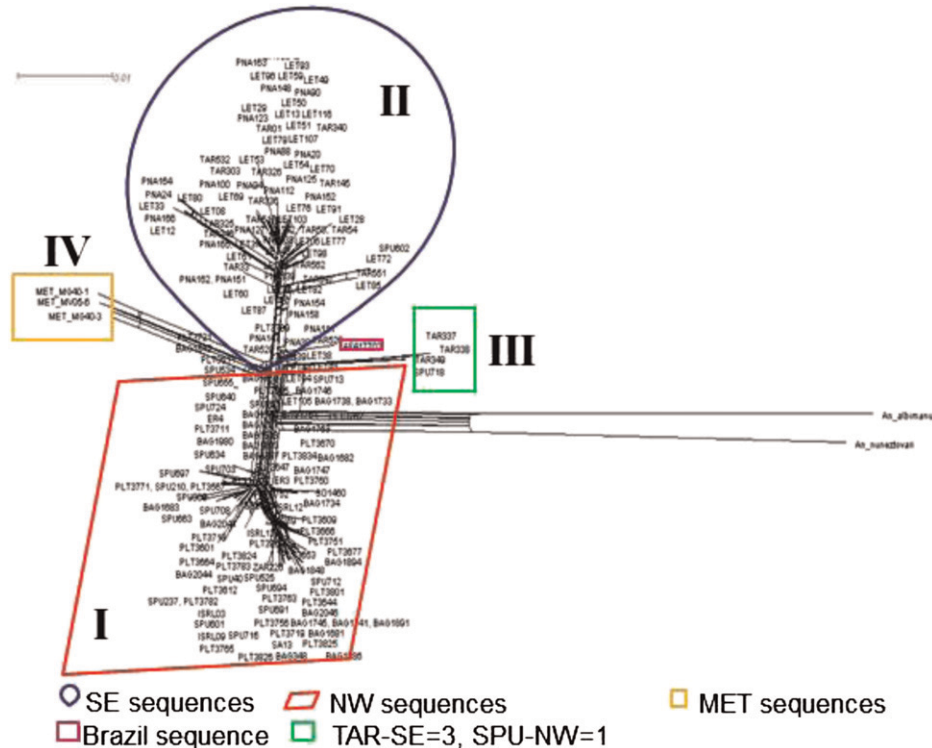
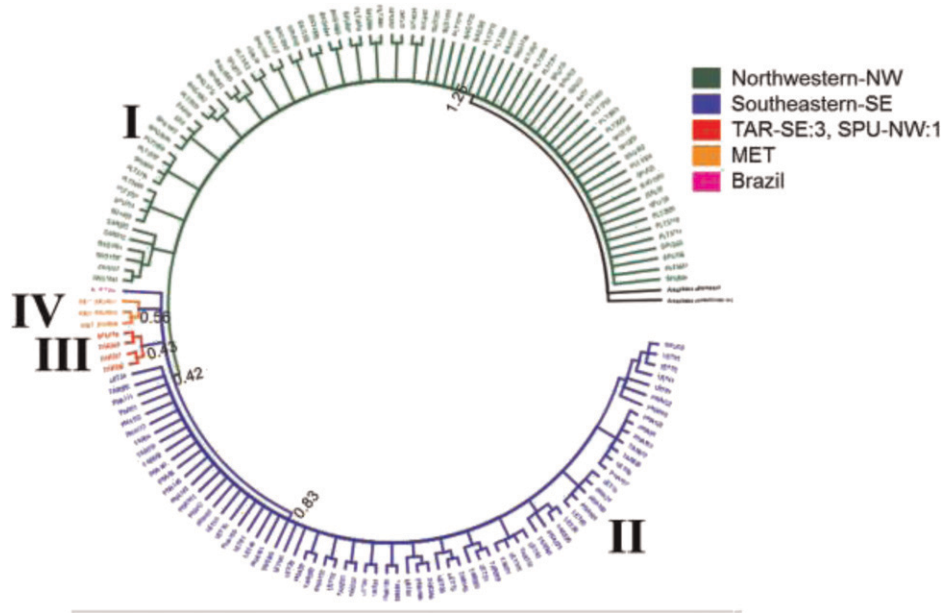


SUPPLEMENTARY FIGURE 1. Median joining haplotype network based on Cytochrome oxidase subunit I (*COI*) sequences of *Anopheles triannulatus* s.l. from Colombia. One *COI* sequence from Brazil was included (814 bp).



SUPPLEMENTARY FIGURE 2. Neighbor-net network based on Cytochrome oxidase subunit I (*COI*) sequences of *Anopheles triannulatus* s.l. from Colombia. One *COI* sequence from Brazil was included (814 bp).



SUPPLEMENTARY FIGURE 3. Bayesian Inference analysis based on Cytochrome oxidase subunit I (*COI*) sequences of *Anopheles triannulatus* s.l. from Colombia. One *COI* sequence from Brazil was included (814 bp).