

ybp2Δ x mad1Δ

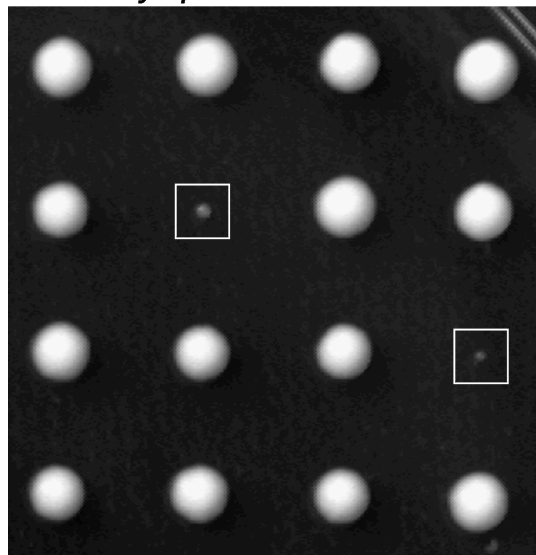


Figure S4 Genetic interactions between *ybp2Δ* and *mad1Δ* mutant alleles. Images of four tetrads from a cross between *ybp2Δ::kanMX* and a *mad1Δ::HIS3* strain. The boxes identify the *ybp2Δ mad1Δ* double mutants. Each column represents the four spore clones of a tetrad.