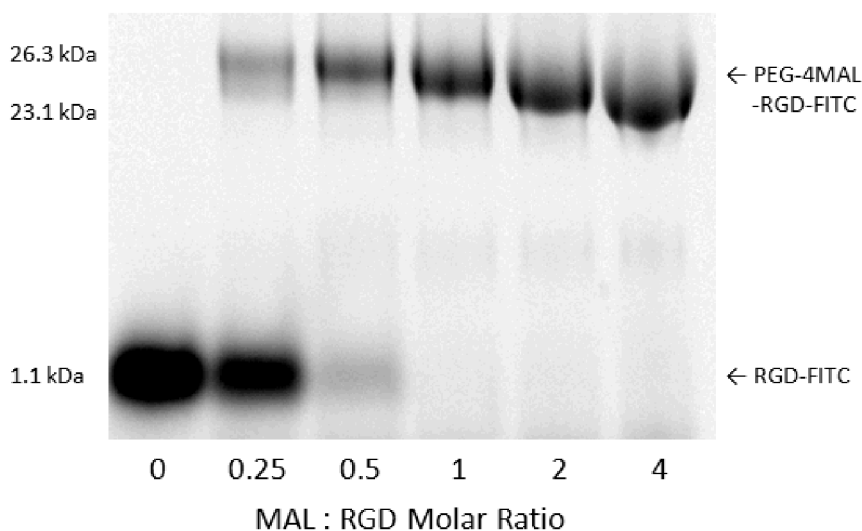
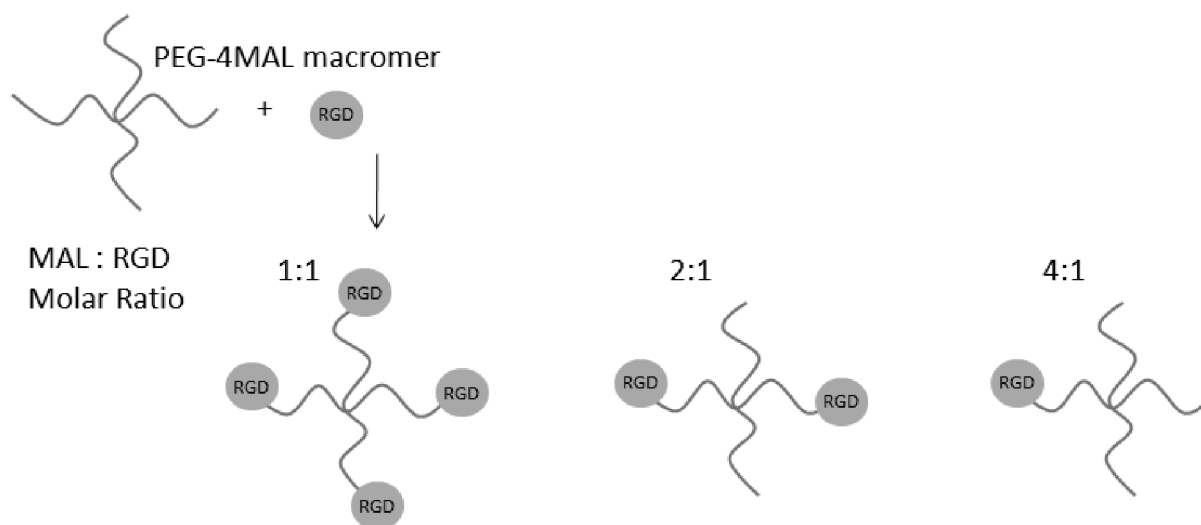


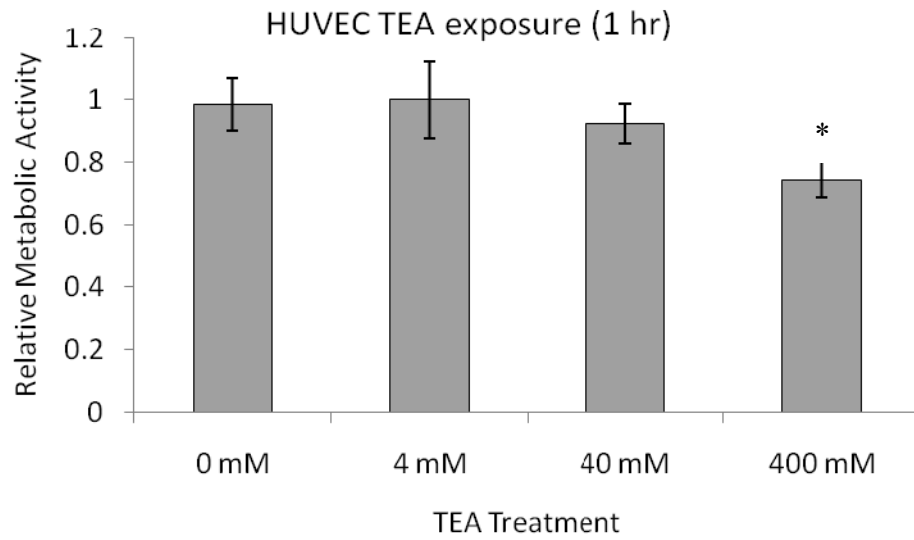
A



B



Supplemental Figure 1. PEG-4MAL reacted with GRGSPC-Fluorescein at increasing PEG-4MAL to RGD molar ratios. A) Increased molecular weight seen by SDS-PAGE indicates RGD conjugated to 4-arm PEG. B) Lower MAL:RGD molar ratios with excess RGD (ex: 1:1) result in multiple RGD conjugations per 4-arm PEG compared to reactions with excess MAL (ex 4:1) have only 1 RGD conjugated per PEG.



Supplemental Figure 2. HUVEC exposed to concentrations of TEA in EGM-2 media pH 7.4 for 1 hour at followed by MTS assay for metabolism and viability.