

Fig. S1. Comparison of the angiogenic and cardiomyocyte properties of intact and SHAM animals in different time points

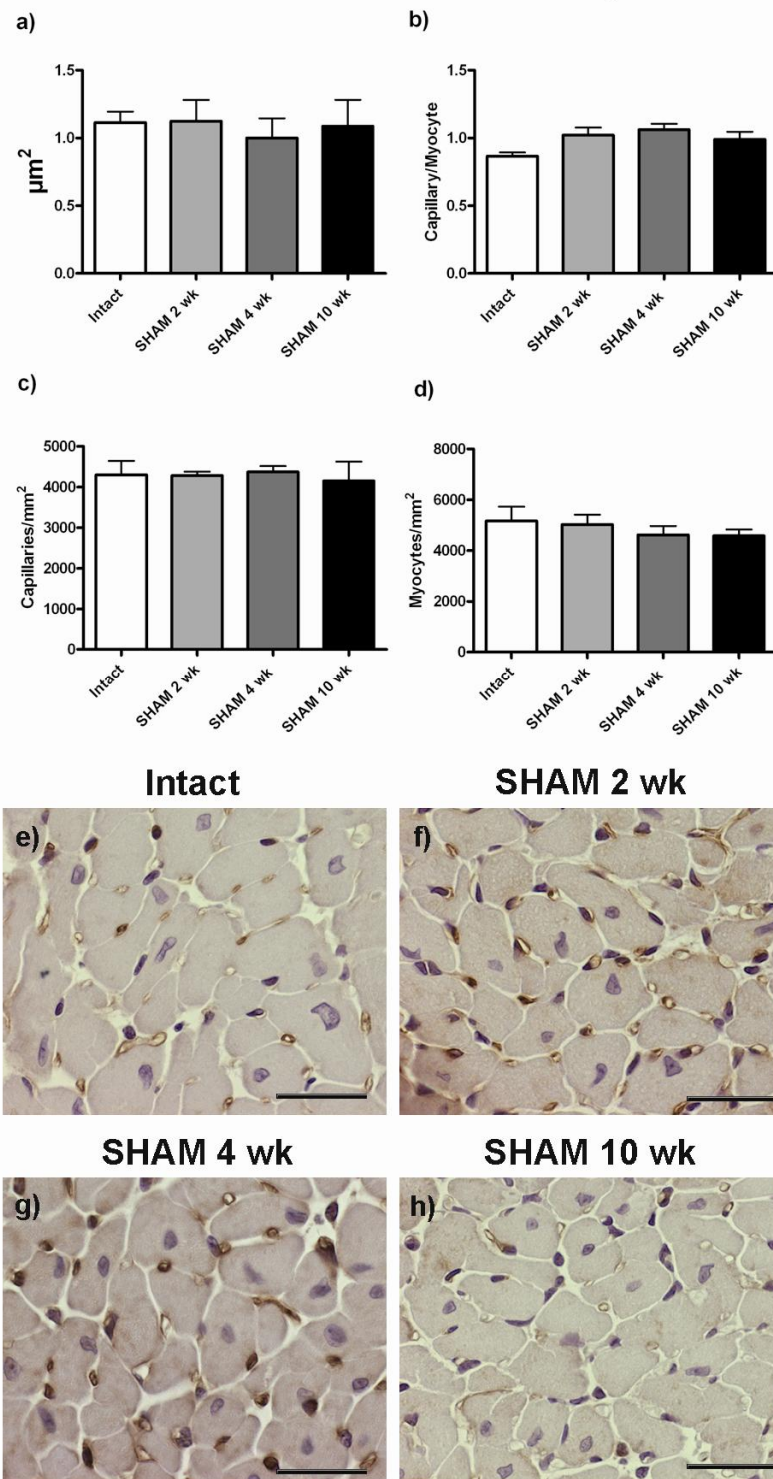


Figure S1. Angiogenic and cardiomyocyte parameters of intact and SHAM operated mice in different time points. No differences were seen in capillary area (a), capillary/myocyte ratio (b), capillary/ mm^2 (c) or myocyte/ mm^2 parameters between intact animals and SHAM operated animals. Statistical analyses with one-way ANOVA and Bonferroni's Multiple Comparison test, $n = 3$. Representative pictures from endothelial stainings with Biotinylated Griffonia (Bandeiraea) Simplicifolia Lectin I, scale bars 50 μm (e-h).