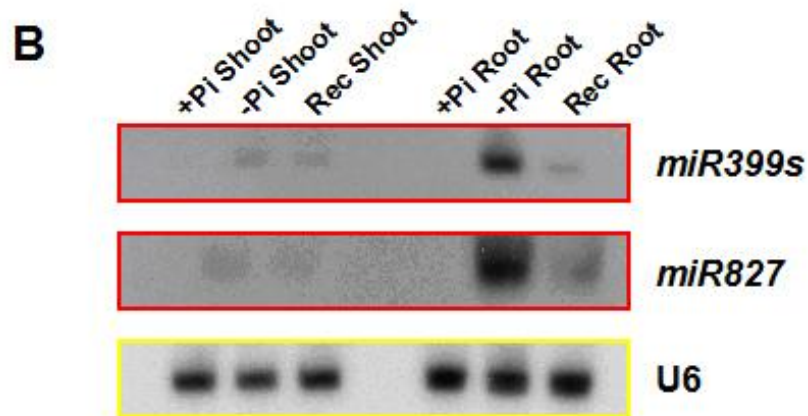
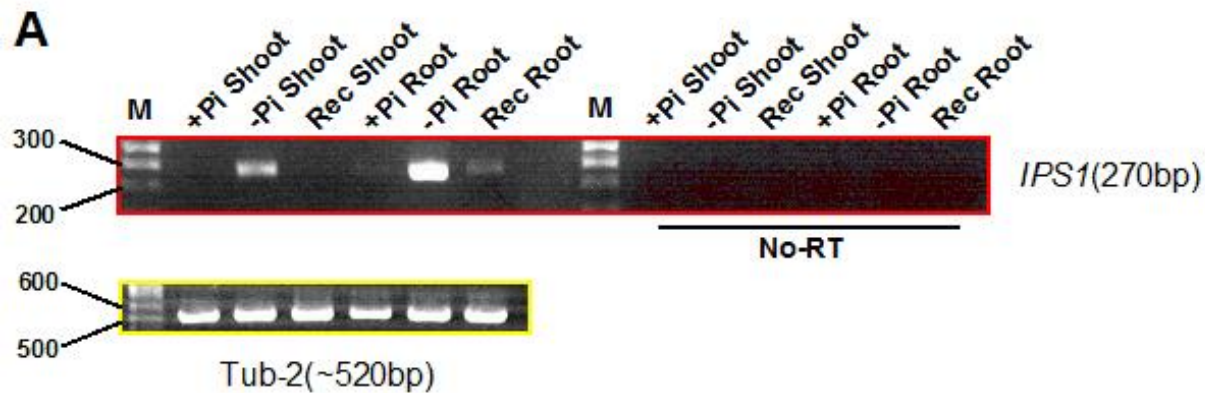


RT-PCR of *IPS1*, *mir399s*, and *miR827*



Instead of measuring free Pi content in plants, we checked the transcriptional levels of Pi-inducible marker genes to confirm when plants were exposed to enough nutrient stress. Briefly, *IPS1*, *miR399s*, and *miR827* are well-known Pi-inducible non-coding RNAs and therefore suitable marker genes. RT-PCR of *IPS1* and sRNA northern blots of *miR399s* and *miR827* was performed (supp. MarkerGenes.pdf). *Tubulin 2* for RT-PCR and U6 for sRNA northern blot were used as internal loading controls. This result indicates that our plant samples were suitable for this research even though Pi-content was not checked.

A. "+Pi": 10-days full nutrient; "-Pi": 10-days Pi starved; "Rec": 10-days Pi starved followed by 3-days Pi replete; Left-with cDNA; Right-"No RT"-no cDNA.