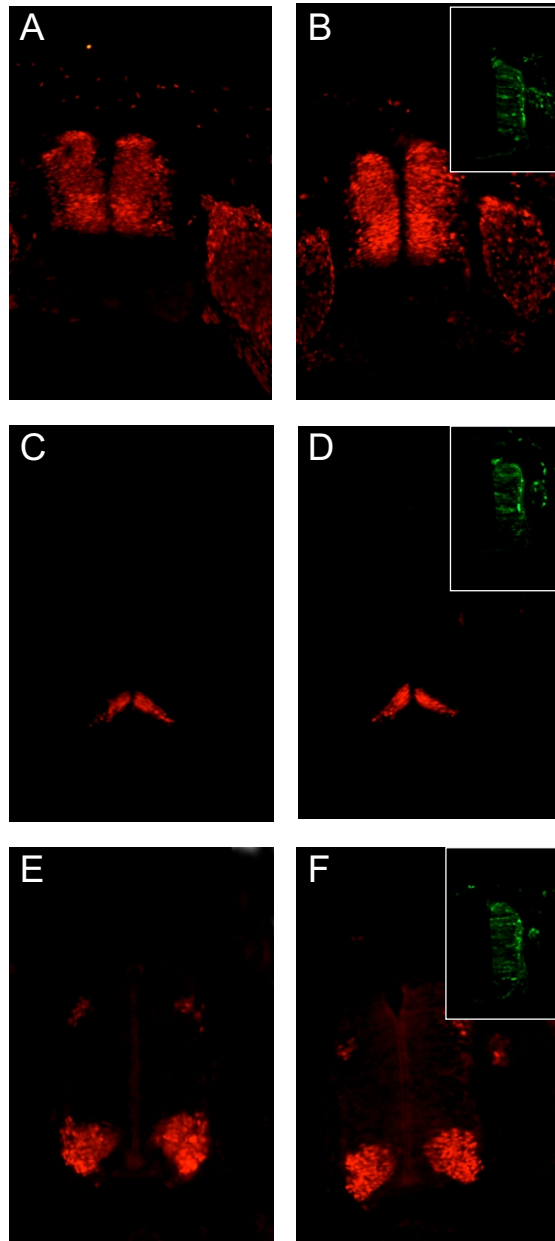


Additional Figure 2



Downregulation of RabGDI does not interfere with spinal cord patterning.

Transverse sections of HH23 embryos were stained with Pax3 (**A** and **B**), Nkx2.2 (**C** and **D**), and Isl-1 (**E** and **F**) to assess spinal cord patterning. The electroporation of dsRabGDI did not change the expression of Pax3 (**B**), Nkx2.2 (**D**), or Isl-1 (**F**). Inserts in **B**, **D**, and **F** show EGFP expression from a co-injected plasmid. **A**, **C**, and **E** show sections taken from a non-injected, age-matched control embryo.