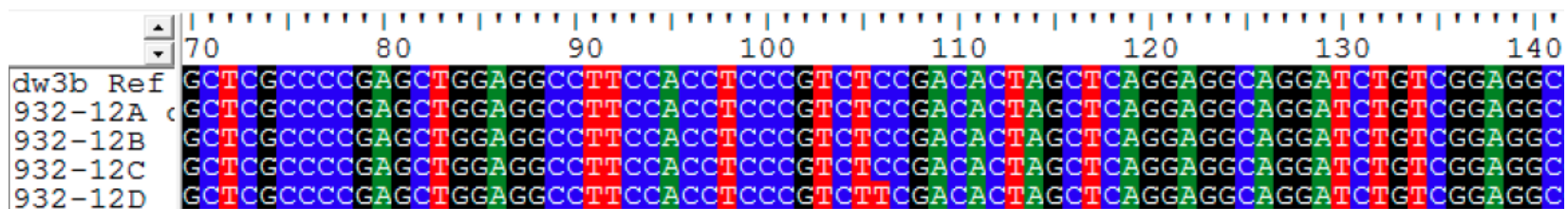


A)



B)

Figure S2 Sanger sequencing validation on M3 generation plants segregating for mutations in a candidate *tef* dwarfing gene. A) p893 mutant alignment with reference sequence of *dw3a* gene. The G742A mutation is validated by seven p893 M3 lines; B) p932 mutant alignment with reference sequence of the *dw3b* gene. The C106T mutation is validated by one p932 M3 line, 932-12D