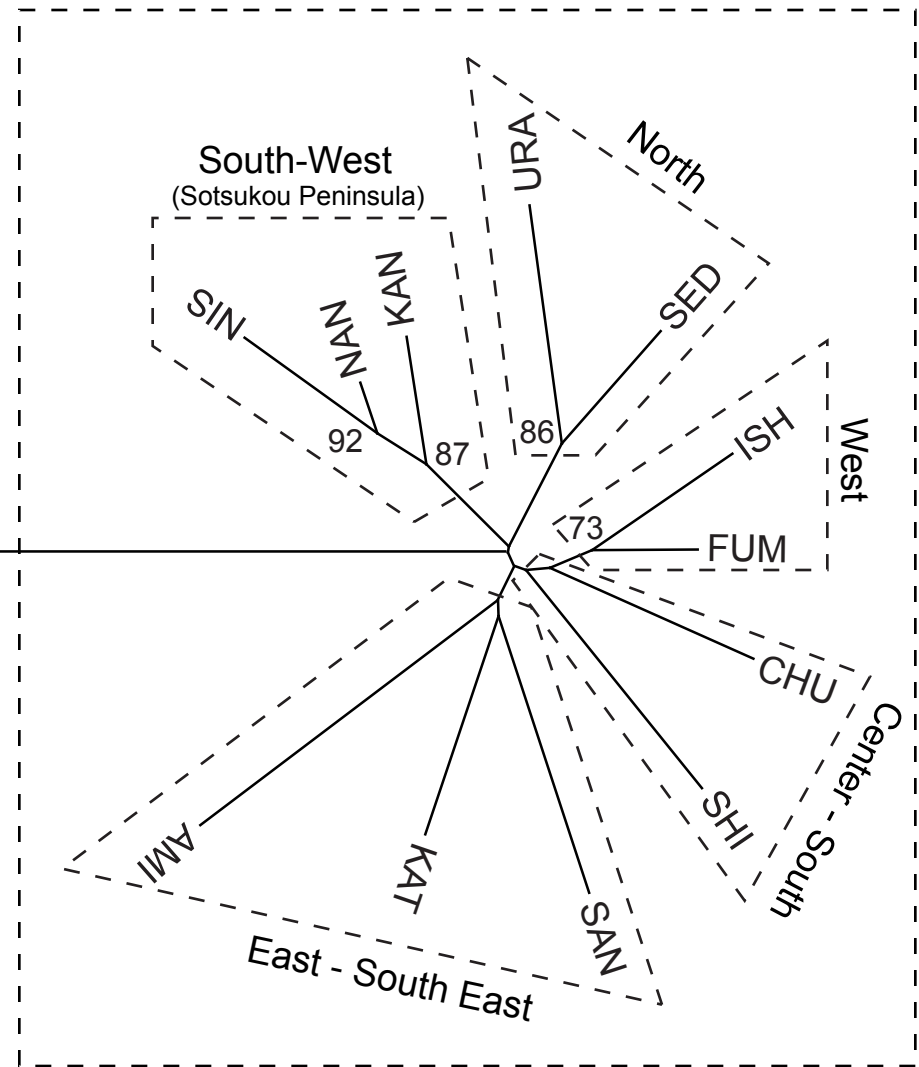


O. ishikawae

0.1 D_A distance



O. splendida

Fig. S2. Unrooted neighbor joining tree based on D_A distance (Nei et al., 1983). Numbers are bootstrap values (>50%) from 1,000 iterations. Boxes frame the monophyletic clades of each species and recognizable clades consisting of geographically neighboring populations of *O. splendida*.