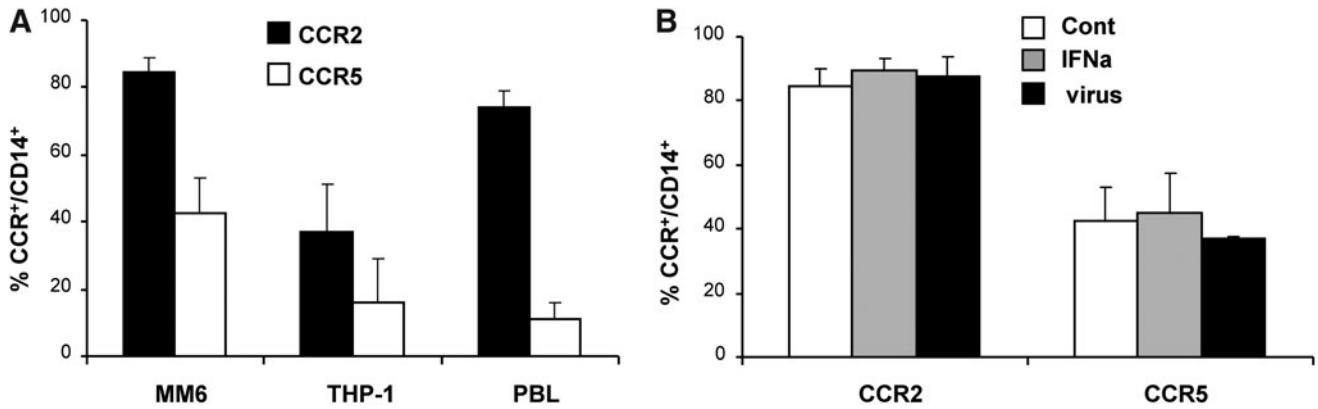


Supplementary Data



SUPPLEMENTARY FIG. S1. Expression of CCR2 and CCR5 in monocytes and monocytic cell lines. **A**, MM6, THP-1 cell lines and freshly isolated human peripheral blood leucocytes (PBL) were stained with anti-CD14, CCR2 and CCR5 fluorescence-labeled antibodies. The percentage of CD14⁺ cells that display CCR2 and CCR5 on their surface was analyzed by flow cytometry and is represented in black and white columns, respectively. **B**, MM6 were treated with IFN α (grey columns), infected with Ad-WTLuc (black columns) during 4 hr or left untreated (white columns). Expression of CCR2 and CCR5 was analyzed 16 hr later.