

Supporting Information

Rahn et al. 10.1073/pnas.1209934109

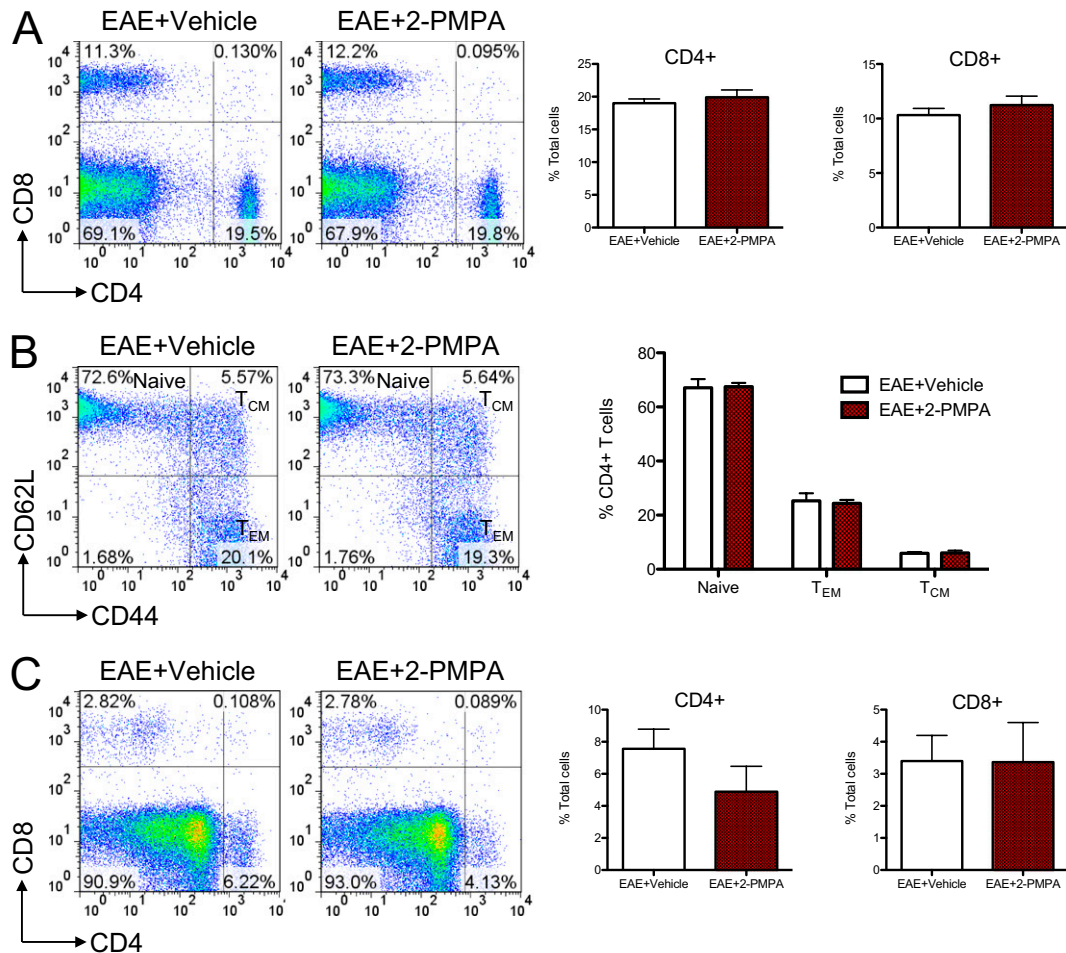


Fig. S1. Effect of 2-PMPA on immune cell populations. Daily administration of 2-PMPA in EAE mice does not affect splenic or CNS lymphocyte populations 28 d postimmunization. (A) Splenocytes isolated from 2-PMPA-treated and control mice on day 28 postimmunization were stained directly ex vivo for CD4 and CD8. Cells were gated on live lymphocytes, and percentages of CD4⁺ (Left) and CD8⁺ (Right) T lymphocytes were determined. (B) CD4⁺ T cells from A were stained for CD44 and CD26L. Percent of each subtype, T effector memory (T_{EM} CD44^{hi} CD62L^{lo}), T central memory (T_{CM} CD44^{hi} CD62L^{hi}), and T naïve (CD44^{lo} CD62L^{hi}), are shown in the graph. (C) Mononuclear cells isolated from brains of mice used in A were stained directly ex vivo for CD4 and CD8. Percentages of infiltrating CD4⁺ (Left) and CD8⁺ (Right) T lymphocytes were determined. Representative FACS plots are shown. Statistical significance was determined with $P < 0.05$. $n = 4$ mice per group.

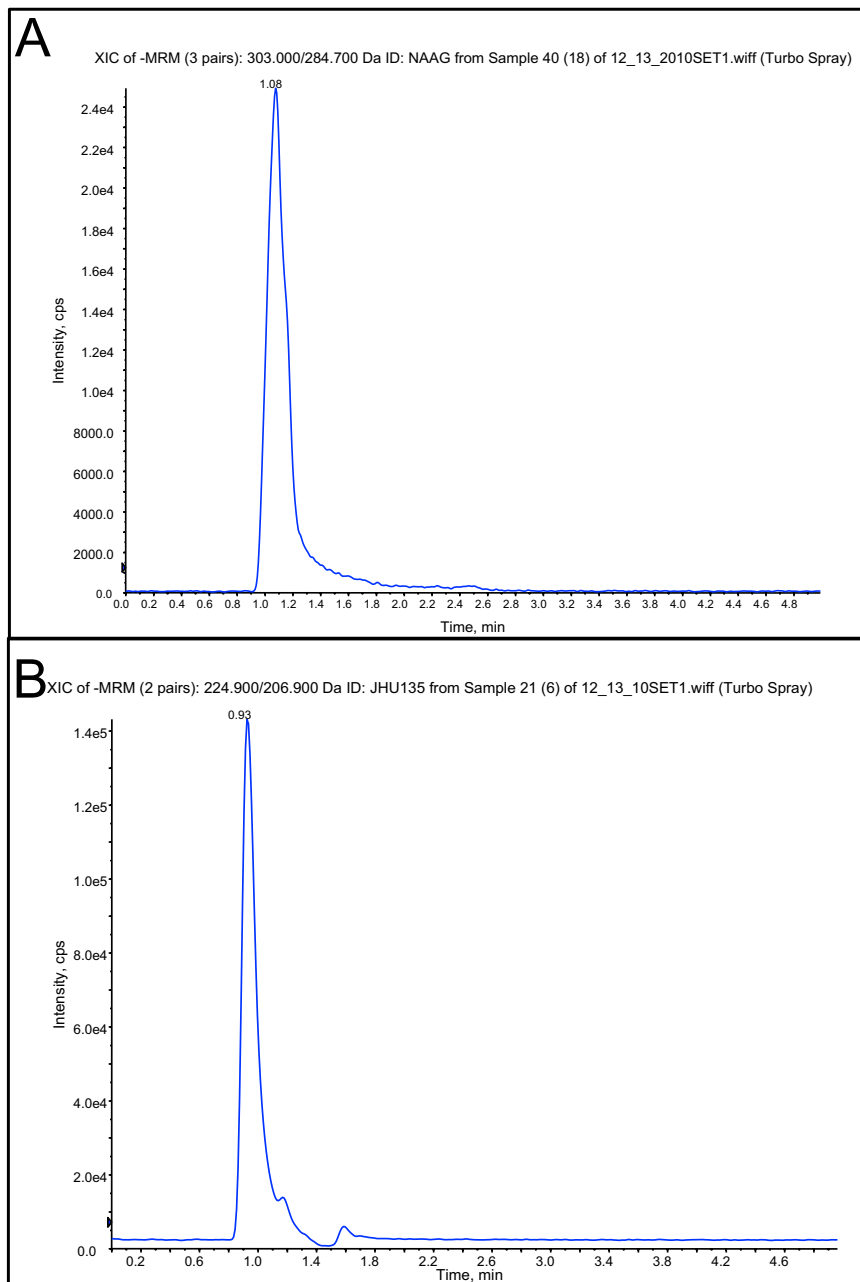


Fig. 54. Sample spectra of mouse brain NAAG (A) and 2-PMPA (B). Chromatographic separation for NAAG and NAA in brain tissue homogenates was achieved using Waters Atlantis column and mobile phase delivered isocratically (acetonitrile: 2 mM ammonium acetate; 35:65, vol/vol; containing 0.1% formic acid). NAA, NAAG, and the internal standard were monitored by tandem mass spectrometry in electrospray negative ionization mode. Linear calibration curves were generated over the range of 5–5,000 ng/mL and tissue samples quantified as $\mu\text{g/g}$. For determination of 2-PMPA, separations were achieved on a Waters XTerra MS C18 column, using MeOH and 2 mM N, N-dimethylhexylamine buffer (50:50, vol/vol at pH 8.5) delivered isocratically. 2-PMPA and the internal standard were monitored by tandem mass spectrometry with electrospray negative ionization mode. Linear calibration curves were generated over the 1–100 ng/mL range and converted to $\mu\text{g/g}$.