

Supporting Information

Aqueous-Based Initiator Attachment and ATRP Grafting of Polymer Brushes from Poly(methylmethacrylate) Substrates

Sreelatha S. Balamurugan, Balamurugan Subramanian, Jowell G. Bolivar, and Robin L. McCarley*

Department of Chemistry, Louisiana State University

Baton Rouge, Louisiana 70803-1804

*tunnel@LSU.edu

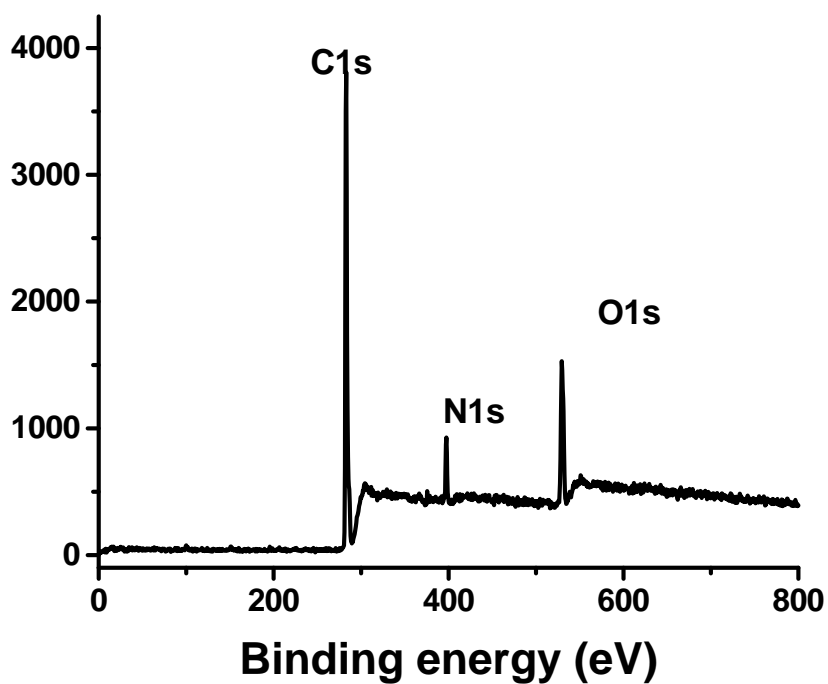


Figure S1. X-ray photoelectron survey spectrum of solid PNIPAAm polymer (Aldrich).

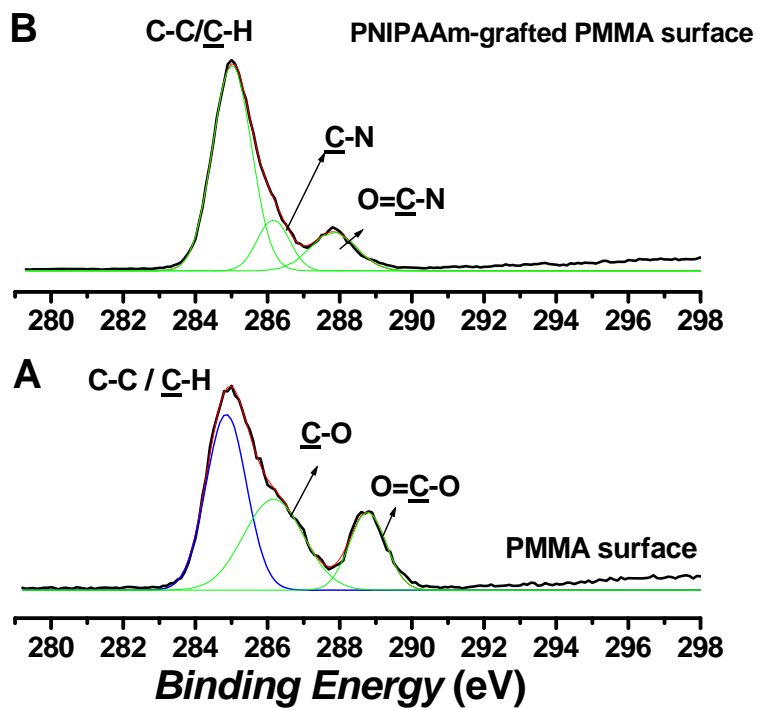


Figure S2. High-resolution C 1s X-ray photoelectron spectra of A. PMMA and B. PMMA-PNIPAAm surfaces.

Pristine PMMA	1
UV-modified PMMA	2
NH₂-PMMA	3
Initiator-PMMA	4
PNIPAAm- PMMA	5
NH₂-PMMA- used for polymerization	6

Figure S3. Transparent nature of functionalized PMMA and PNIPAAm-grafted PMMA surfaces.