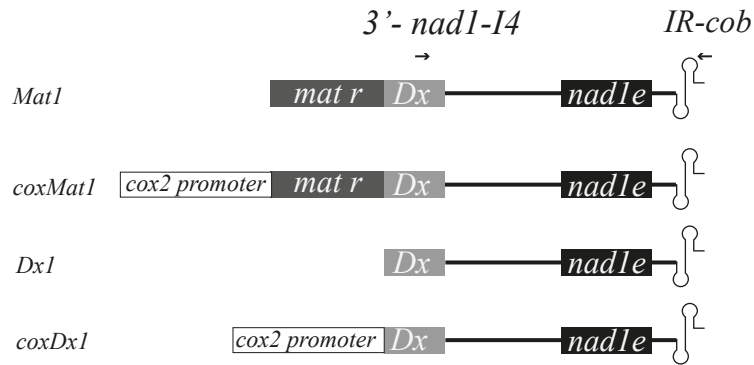
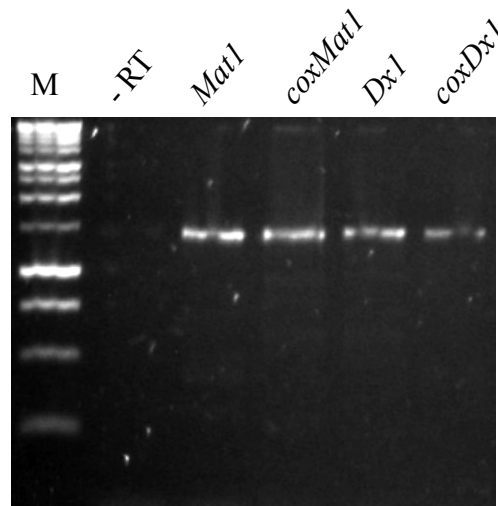


A



B



Supplemental S3. Expression of *nad1e* transgenes after electroporation of isolated wheat mitochondria. (A) Four constructs were used: (*Mat1*) contains all the 3'-half intron 4 (*3' nad1-I4*) and the *nad1e* exon, linked to the inverted repeat from the non coding region of wheat apocytochrome b (*cob*) gene; (*Dx1*) contains only the domain maturase (*Dx*) from the *mat-r* ORF was linked to the *Ir-cob* region. The same sequences were fused to the cytochrome oxidase subunit 2 (*cox2*) promoter to obtain the recombinant vectors *coxMat1* and *cox2Dx1*. (B) Agarose gel electrophoresis of PCR products obtained after three nested PCR reactions of 20 cycles each, using primers *cob3'(1)AS*, *cob3'(2)AS* or *cob3'(3)AS*, combined with primers *Dx1S*, *Dx2S* or *Dx3S*. One of the four PCR control reactions made on samples where reverse transcriptase was omitted in cDNA reactions is shown (-RT). The DNA size marker BenchTop 1kb DNA Ladder (Promega). Primers used are indicated in Supplemental S1.