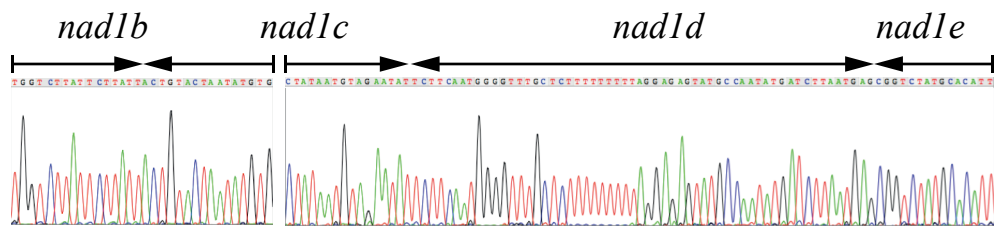
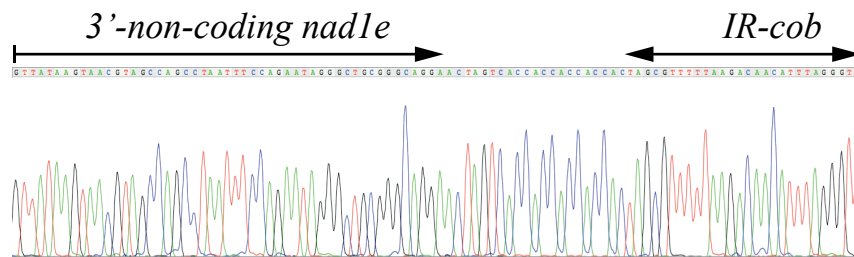


A



B



**Supplemental S4.** Electropherogram from a cloned *nadI* trans-spliced PCR product obtained after electroporation of the *nadIe* chimeric gene. (A) The junctions between exons *nadIb* and *nadIc*, the complete exon d, and the junctions with *nadIc* and the fusion between exons *nadIc* and *nadIe* are shown. (B) Sequence of the 3' end of the chimeric transcript showing the link between the end of *nadIe* and the *IR-cob* terminator sequence.