

Supplemental Materials

Table S1. Primers used in the study

Primer	Gene	Orientation	Sequence [†]
oNP34	<i>NotI</i> /vIL6	Backward	ATACGACGCGGCCGCACC/ATGTGCTGGTTCAAGTTGTGGTC
oNP35	<i>Bam</i> HI/vIL6	Forward	TACTCAGGATCC/CTTATCGTGGACGTCAGGAGTCA
oJGK24	<i>NotI</i> /hIL6	Forward	ATACGACGCGGCCGCACC/ATGAACTCCTTCTCCACAAG
oJGK25	<i>Bam</i> HI/hIL6	Backward	TACTCAGGATCC/CATTTGCCGAAGAGCCCTCA
oJGK32	vIL6	Forward	ACTGTAGTGCCTT <u>G</u> TGCAGCTTATTGA
oJGK33	vIL6	Backward	CACTACAGTC <u>G</u> <u>A</u> <u>A</u> <u>G</u> <u>A</u> AAATTTGACCGCGGTCT
oJGK46	T7/Kozak/vIL6*	Backward	TAATACGACTCACTATAGGG/AACAGCCACC/ATGTGCTGGTTCA AGTTG
oJGK47	pT/stop/vector*	Backward	TTTTTTTTTTTTTTTTTTTTTTTTTTTTTTTTTTTT/TCACTA/CTTGTCATCGT CATCCTT
oJGK51	vIL6	Backward	GGATGCTATGGGTGATCGATG
oJGK52	vIL6	Forward	ACCCTTGCAGATGCCGG

*Kozak, Kozak sequence; pT, poly-T sequence; stop, stop codon; vector, p3FLAG-CMV-14 vector.

[†]Underlines, point mutations.

Supplemental Figure Legends

Figure S1. Construction of vIL6 and hIL6 expression vectors. vIL6 ORF (nt 17875-17264 of the KSHV genome, GenBank accession number U75698) and hIL6 ORF (GenBank accession number NM_000600) were separately inserted into a p3xFLAG-CMV-14 vector (Sigma) at *NotI* and *BamHI* sites.

Figure S2. Copy numbers of miR-608 and miR-1293 in BCBL-1 cells with (+DOX) or without (-DOX) KSHV lytic induction. Doxycycline (DOX)-inducible TREx BCBL-1 RTA and vector control cell lines were used in the study. TREx BCBL1-RTA cells carrying an episomal KSHV genome and a tetracycline-inducible RTA (ORF50) expression vector were cultivated in the presence of doxycycline (1 µg/ml) to induce KSHV lytic infection. Copy numbers of miR-608 and miR-1293 were quantified by qRT-PCR on total small RNA extracted from the cells 24 h after DOX induction.

Figure S3. Distribution of endogenous miR-1293 and miR-155 in MCD lymph nodes. Panels show germinal center (GC) distribution of miR-1293 and mantle zone (MZ) distribution of miR-155. No miRNA, no specific miRNA probe. See more details for in situ hybridization in Figure 7. Scale bar represents 200 µm.

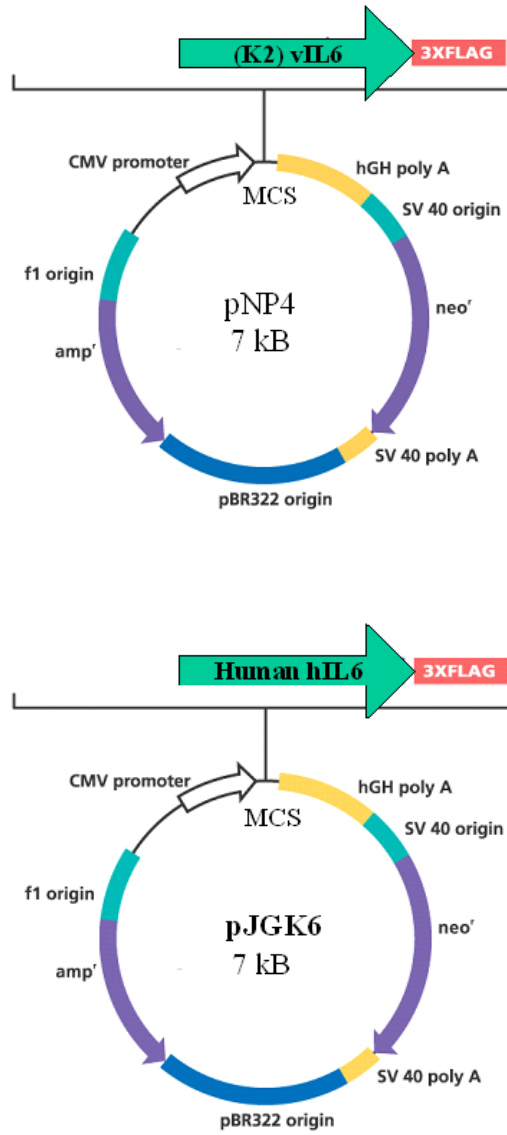


Figure S1

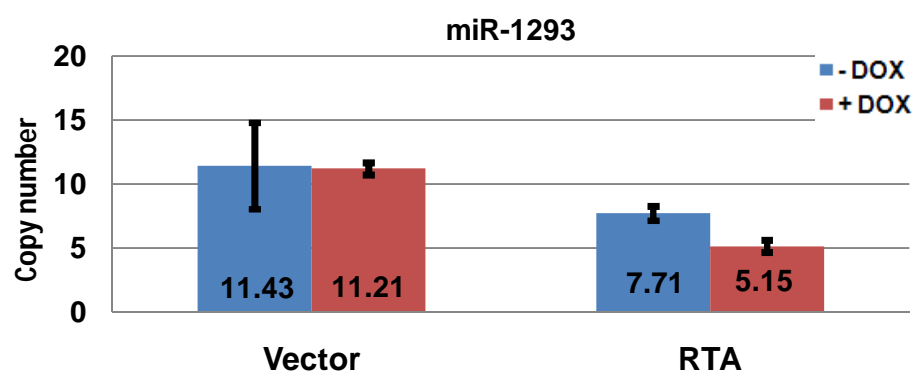
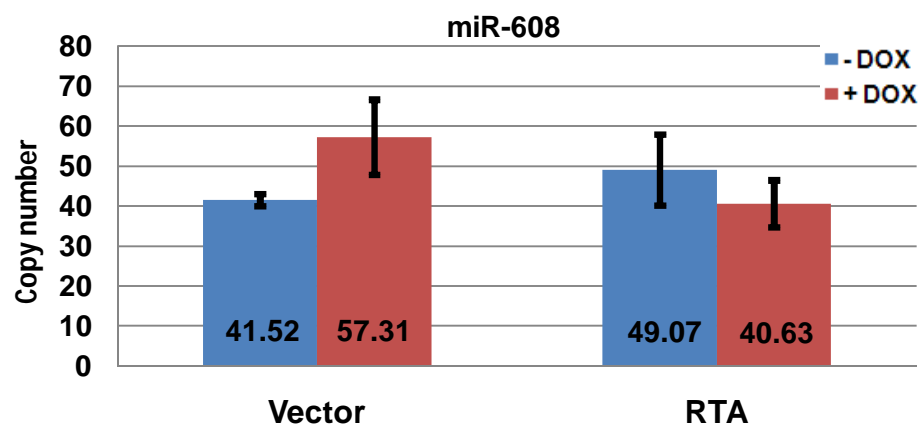


Figure S2

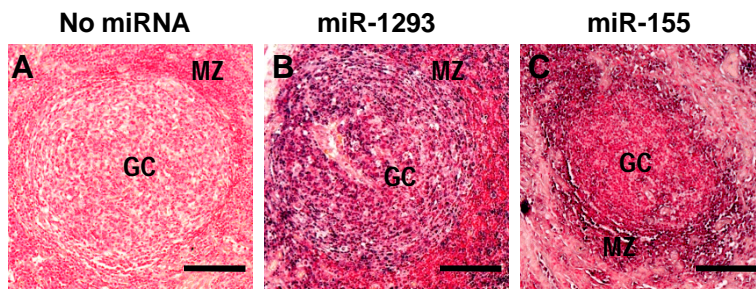


Figure S3

miR-155 expression in the mantle zone regions of
MCD lymph nodes with KSHV infection

