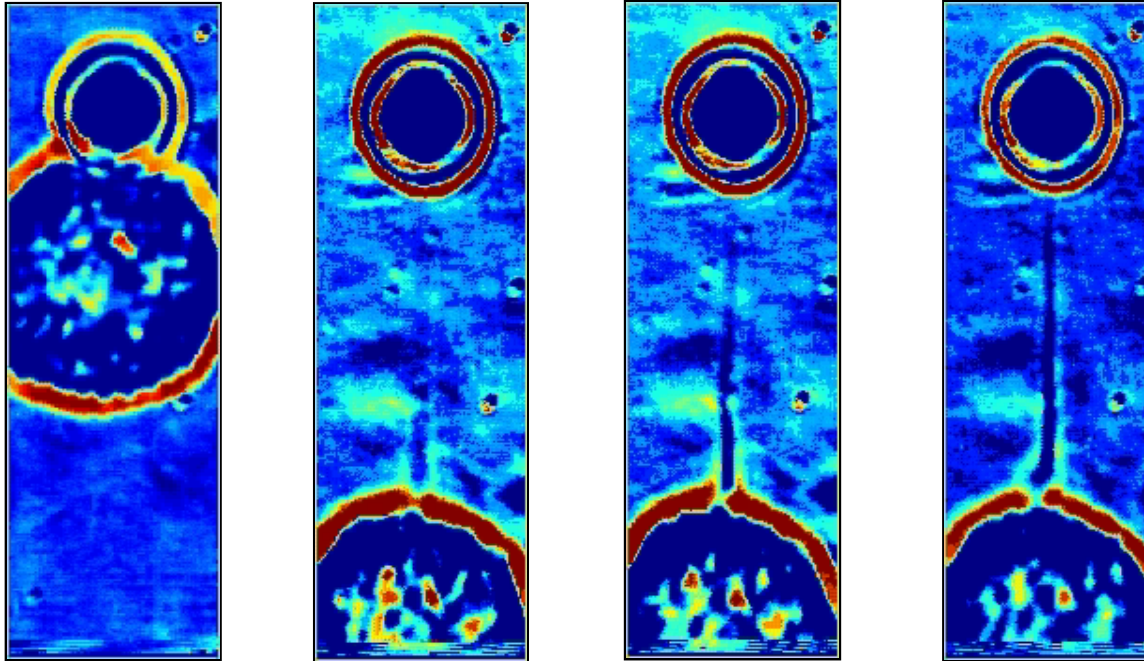


Movie S1. Membrane tube formation from cell
(15 μm length)



Movie S1. One 15 μm tube formed from mast cell of mouse. First panel: tube formation and relaxation, 15 s of formation and elongation and 73 s of tube relaxation. Dimensions of image in movie are 8.6 by 27.6 μm , 88 seconds of data. Second panel: Movie showing tube bend during relaxation, 117 s. Third panel: Movie showing tube bend during relaxation, 63 s shown. Fourth panel: Movie showing tube twist, 64 s of data. Dimensions of images in panels 2 through 4 are 9 by 28.7 μm and frame rate for panel 1 to 4 is 20 fps, ten times faster than original.