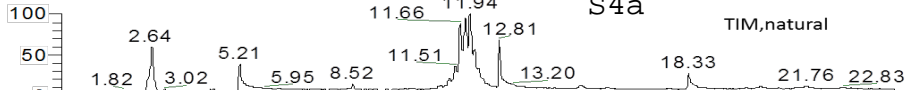
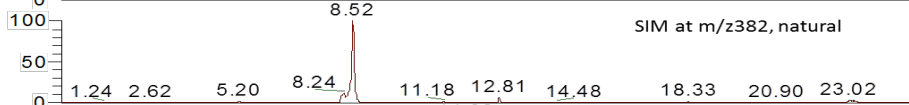


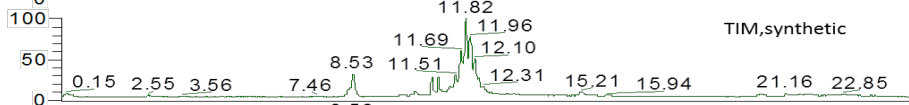
S4a



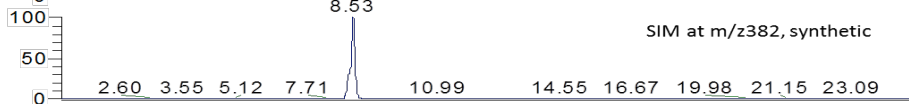
NL: 2.74E8
 TIC F: MS
 tc_281011_natcomp1_20
 ul



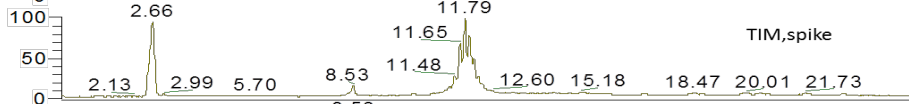
NL: 8.45E6
 m/z= 381.50-382.50 F:
 MS
 tc_281011_natcomp1_20
 ul



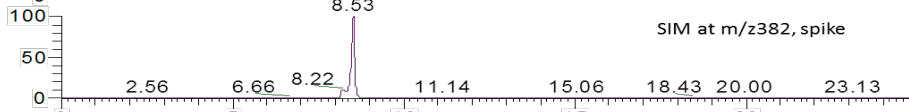
NL: 3.37E8
 TIC F: MS
 tc_281011_syntheticcom
 p1_125ng_ul_5ul



NL: 5.07E7
 m/z= 381.50-382.50 F:
 MS
 tc_281011_syntheticcom
 p1_125ng_ul_5ul

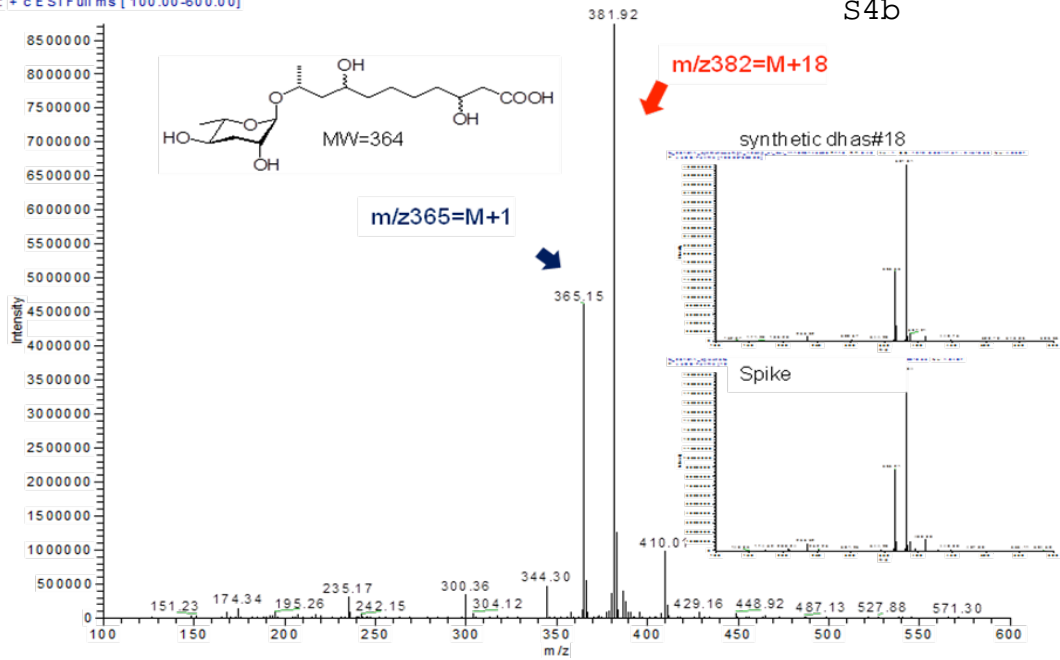


NL: 3.31E8
 TIC F: MS
 tc_281011_spikenat&synt
 heticcomp1

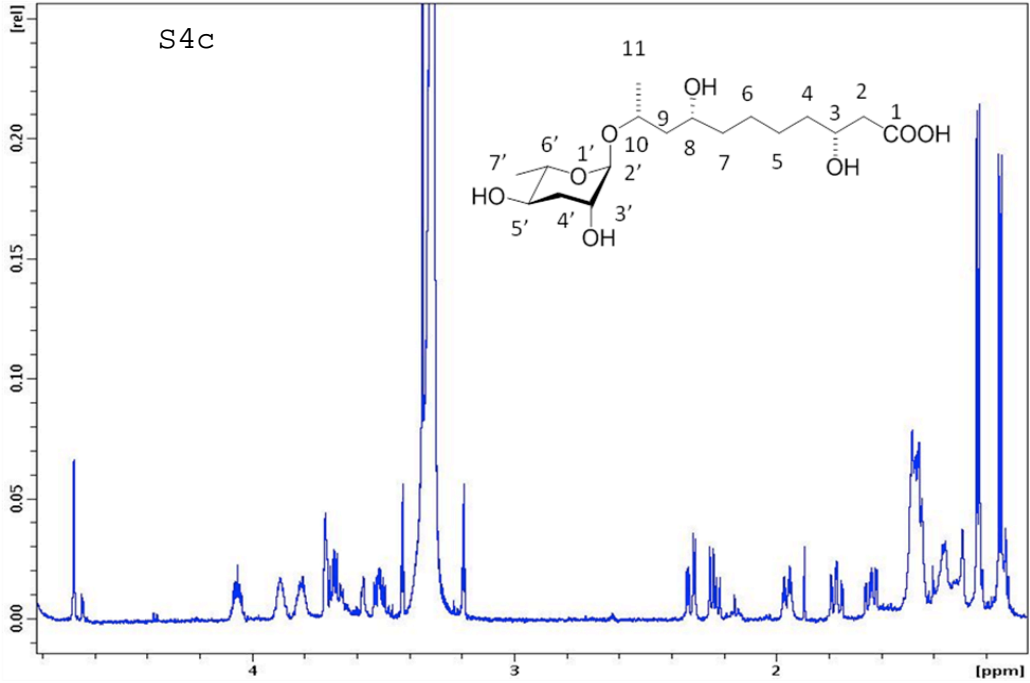


NL: 2.13E7
 m/z= 381.50-382.50 F:
 MS
 tc_281011_spikenat&synt
 heticcomp1

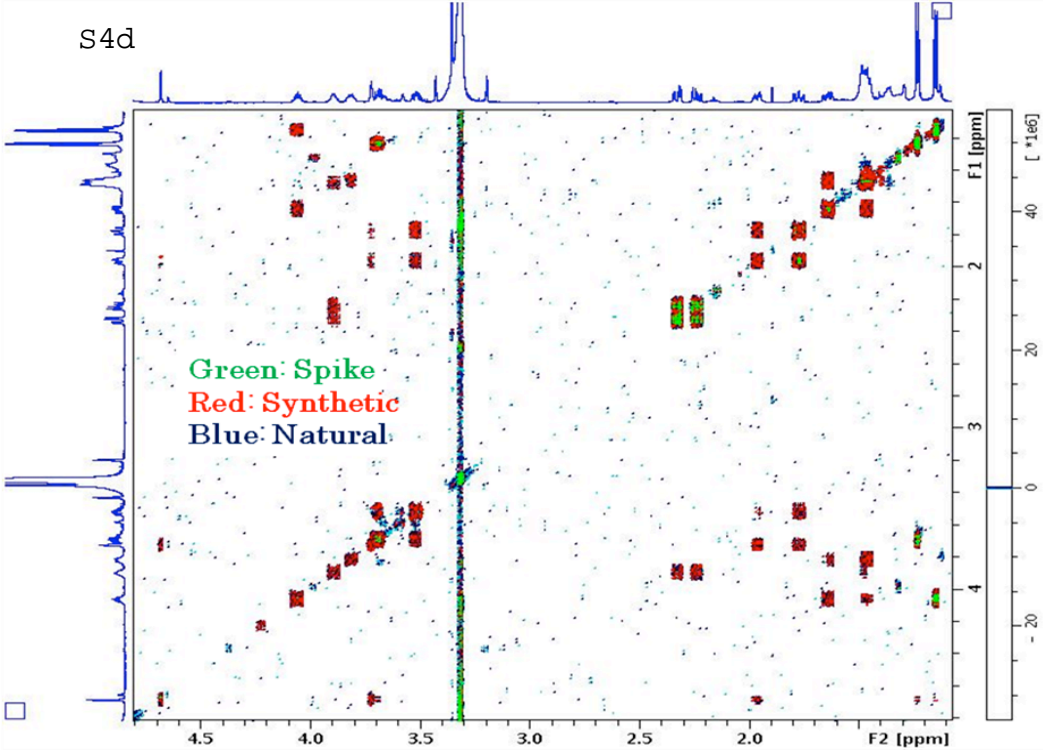
S4b



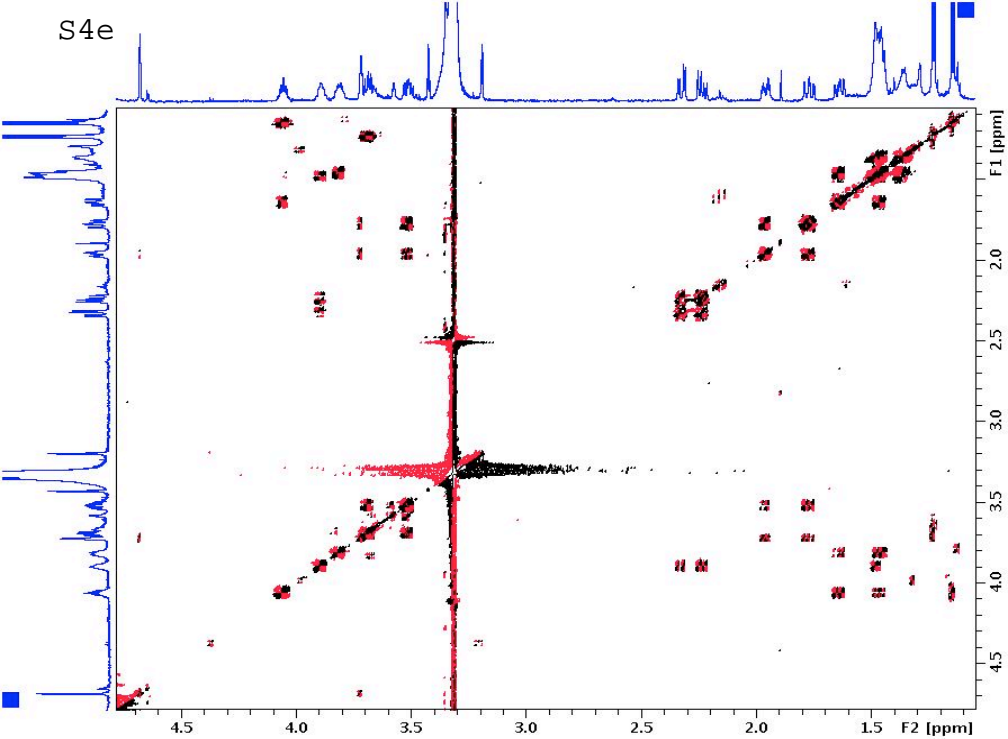
S4c



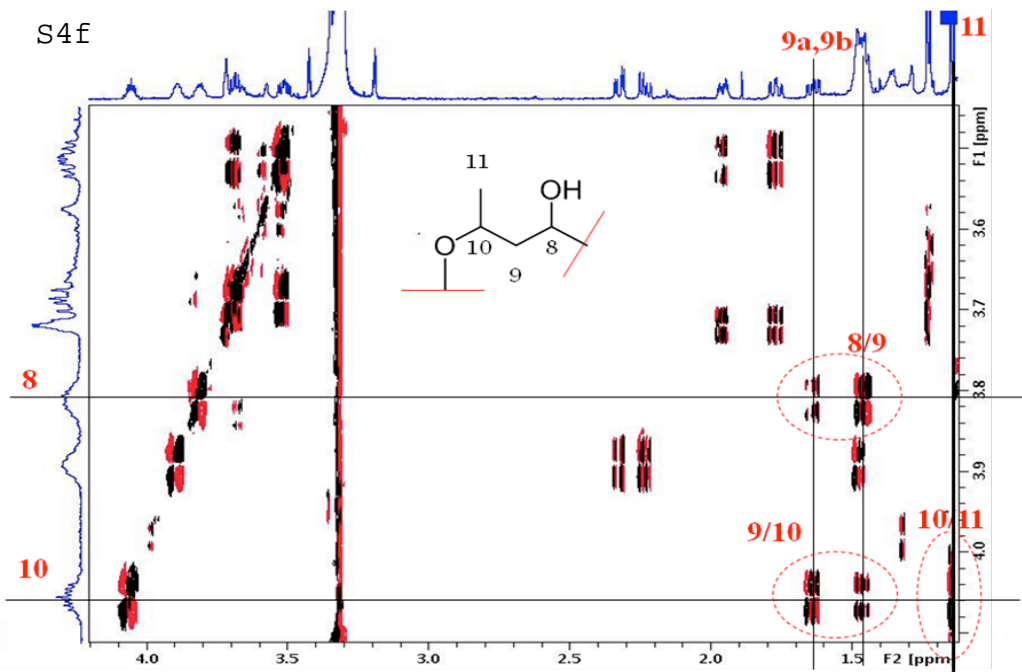
S4d



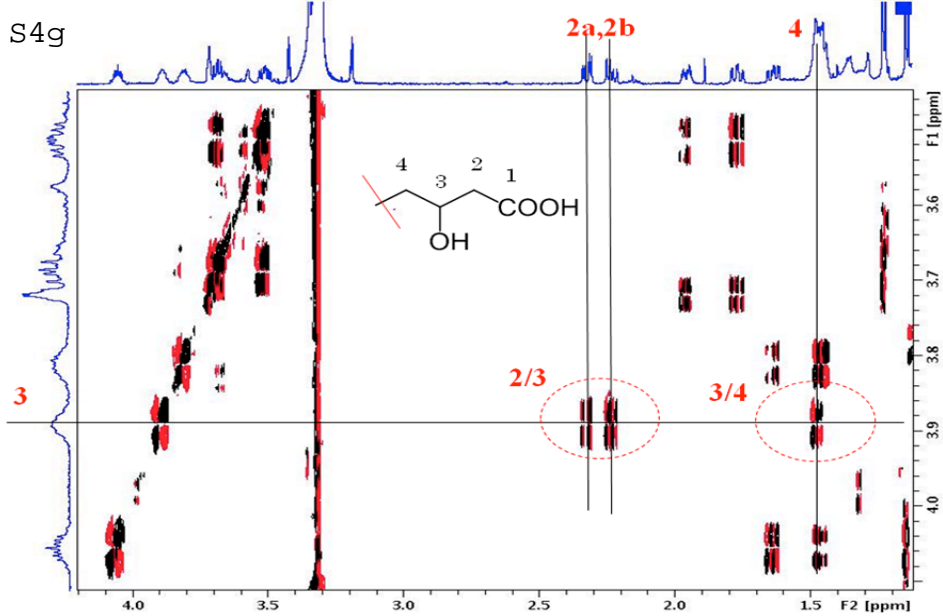
S4e



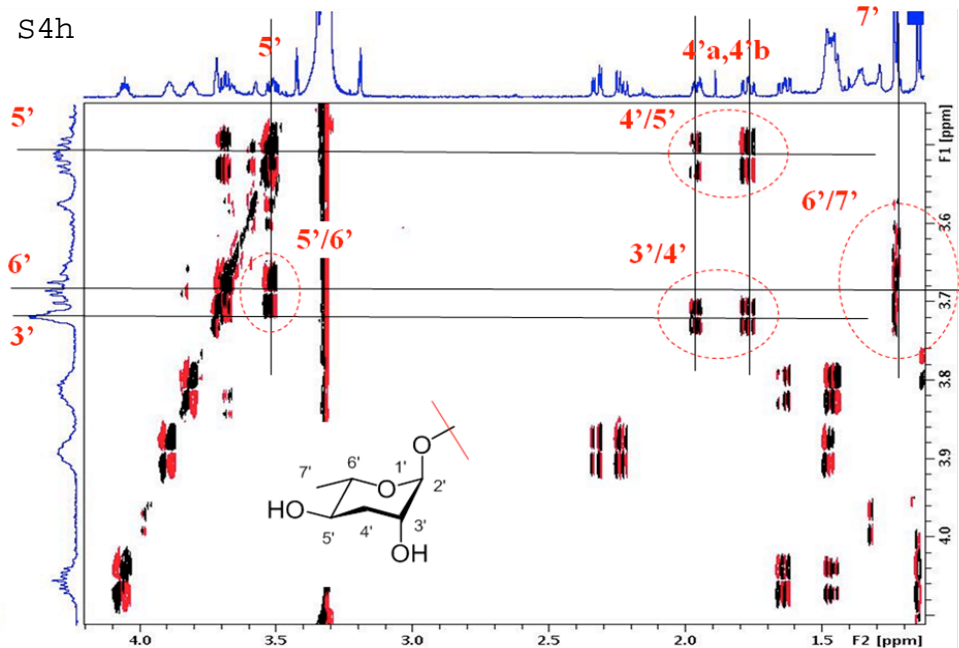
S4f



S4g



S4h



S4i

