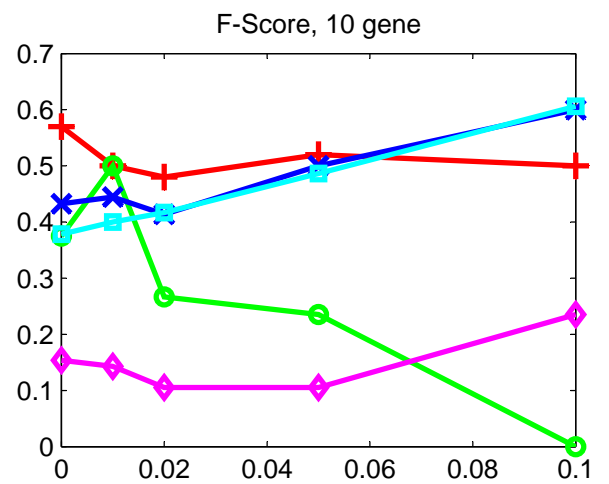
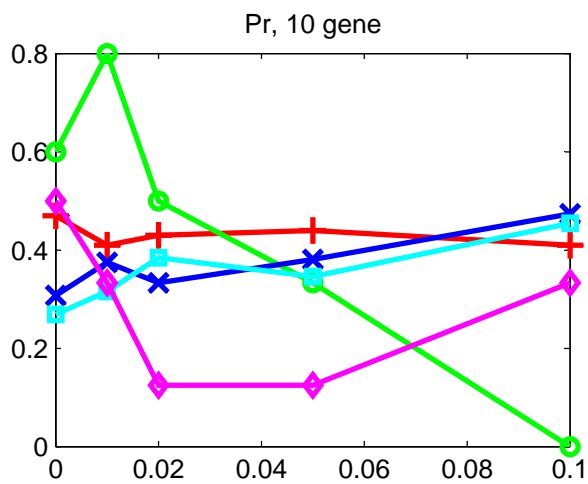
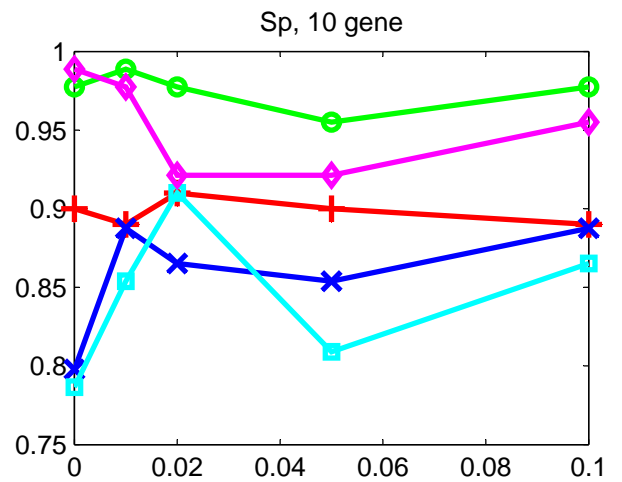
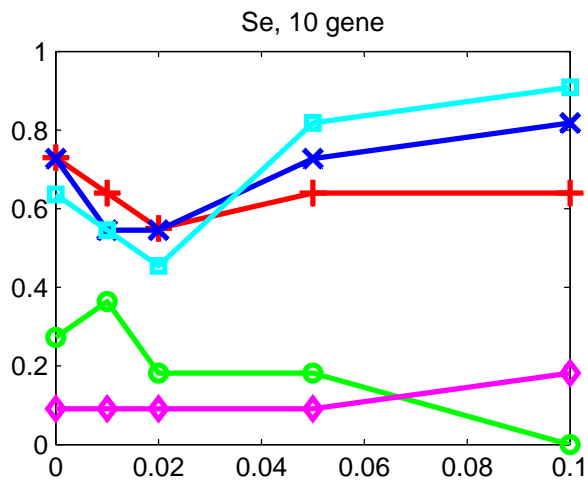
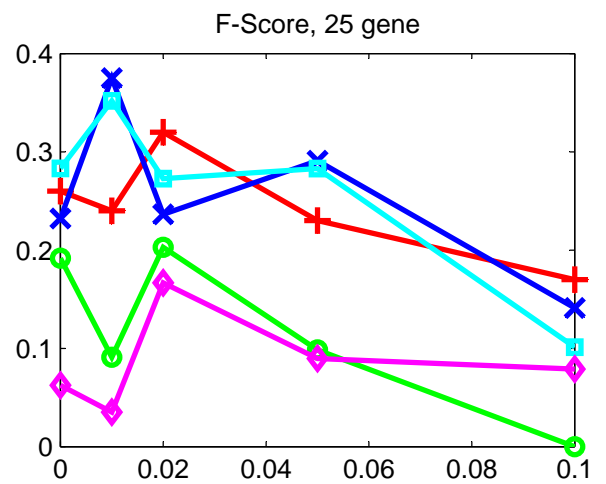
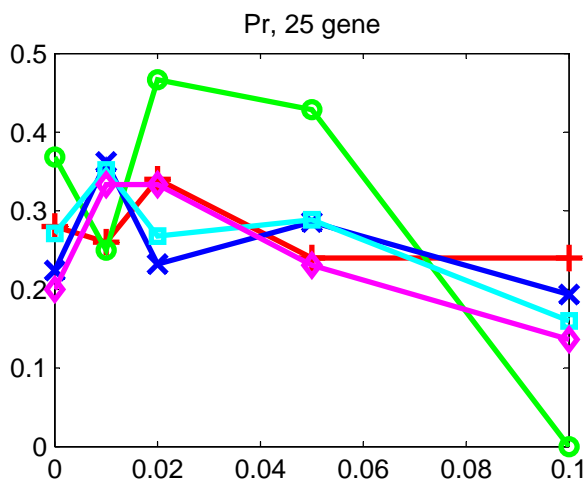
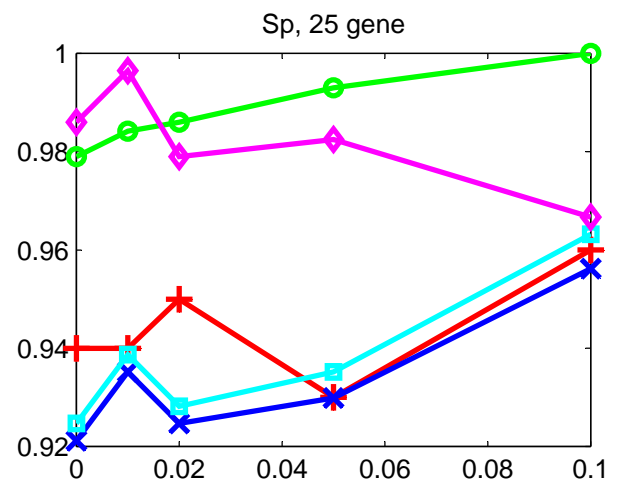
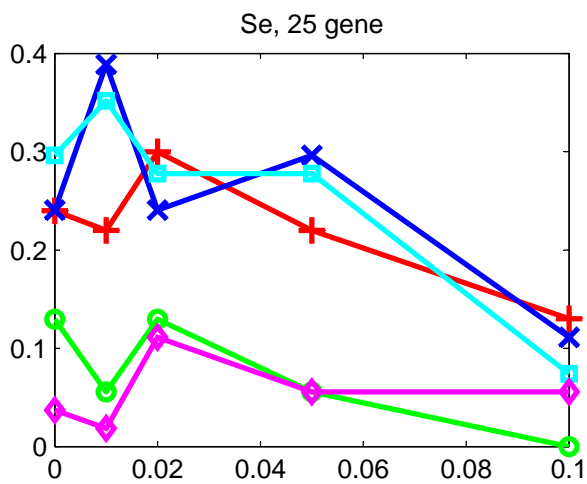


Comparison of performance with 3 other methods for the 10-gene synthetic network. Red(+)-Proposed, Green(o)-Banjo, Blue(x)-BNFinder+BDe, Cyan (square)-BNFinder+MDL, Magenta(diamond)-TDARACNE



Comparison of performance with 3 other methods for the 25-gene synthetic network. Red(+)-Proposed, Green(o)-Banjo, Blue(x)-BNFinder+BDe, Cyan (square)-BNFinder+MDL, Magenta(diamond)-TDARACNE



Comparison of performance with 3 other methods for the 50-gene synthetic network. Red(+)-Proposed, Green(o)-Banjo, Blue(x)-BNFinder+BDe, Cyan (square)-BNFinder+MDL, Magenta(diamond)-TDARACNE

