

SUPPLEMENTAL MATERIAL

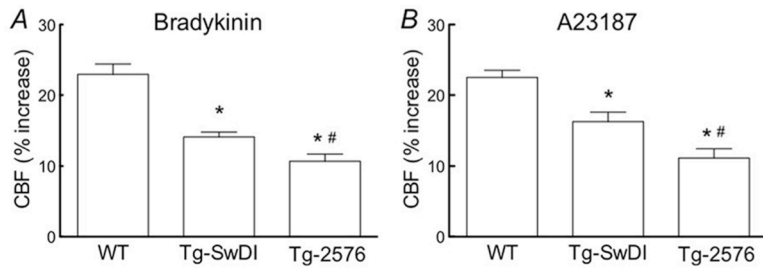
Supplemental Table 1: Blood pressure and blood gases of mice in which CBF was measured.

	Genotype	Treatment	Sampling	Stimuli	N	MAP (mmHg)	pCO ₂ (mmHg)	pO ₂ (mmHg)	pH
Fig. 3	WT	Vehicle	Before	- Whisker - ACh - Bradykinin - A23187 - Adenosine	5	82±2	33.5±2.5	121.7±9.2	7.37±0.02
			After			82±3	32.2±2.9	126.7±9.3	7.36±0.03
	Tg-SwDI		Before		5	79±2	33.8±2.5	136.3±9.8	7.39±0.02
			After			80±2	29.4±1.8	133.8±9.2	7.40±0.02
	Tg-2576		Before		5	80±1	34.6±1.7	138.8±4.9	7.37±0.02
			After			80±2	34.4±1.8	133.8±4.6	7.37±0.02
Fig. 4	WT	Vehicle	Before	- Whisker - ACh - Adenosine	5	80±3	34.0±1.7	132.5±7.1	7.39±0.02
			After			82±2	33.6±1.6	130.0±5.5	7.39±0.02
		Aβ ₁₋₄₀	Before		5	83±2	35.2±2.3	130.1±5.3	7.37±0.01
			After			83±1	32.0±1.8	132.7±5.9	7.39±0.02
	Tg-SwDI	Vehicle	Before	- Whisker - ACh - Adenosine	5	81±4	34.1±2.1	135.3±5.9	7.37±0.02
			After			82±1	32.5±1.6	133.6±5.1	7.39±0.02
		Aβ ₁₋₄₀	Before		5	83±4	34.9±1.5	134.1±5.3	7.37±0.02
			After			81±3	33.3±2.8	136.6±7.3	7.36±0.02
	Tg-2576	Vehicle	Before	- Whisker - ACh - Adenosine	5	81±1	33.2±1.5	136.8±3.8	7.37±0.01
			After			80±2	33.5±1.7	135.3±4.0	7.38±0.01
		Aβ ₁₋₄₀	Before		5	80±2	34.5±1.5	134.5±4.5	7.39±0.01
			After			81±2	31.2±1.7	136.0±3.9	7.37±0.01

Supplemental figure 1: Increases in CBF elicited by bradykinin (A) and A23187 (B) (* $p < 0.05$ from WT; # $p < 0.05$ from WT and Tg-SwDI; Analysis of variance and Tukey's test; $n = 5$ /group).

Supplemental figure 2: Effect of i.c. infusion of A β 1-40 on the increase in CBF evoked by adenosine in WT (A), Tg-SwDI (B), and Tg-2576 (C) ($p > 0.05$ from before; Analysis of variance and Tukey's test; $n = 5$ /group).

Supplemental figure 1



Supplemental figure 2

