

Supplemental Figure 2

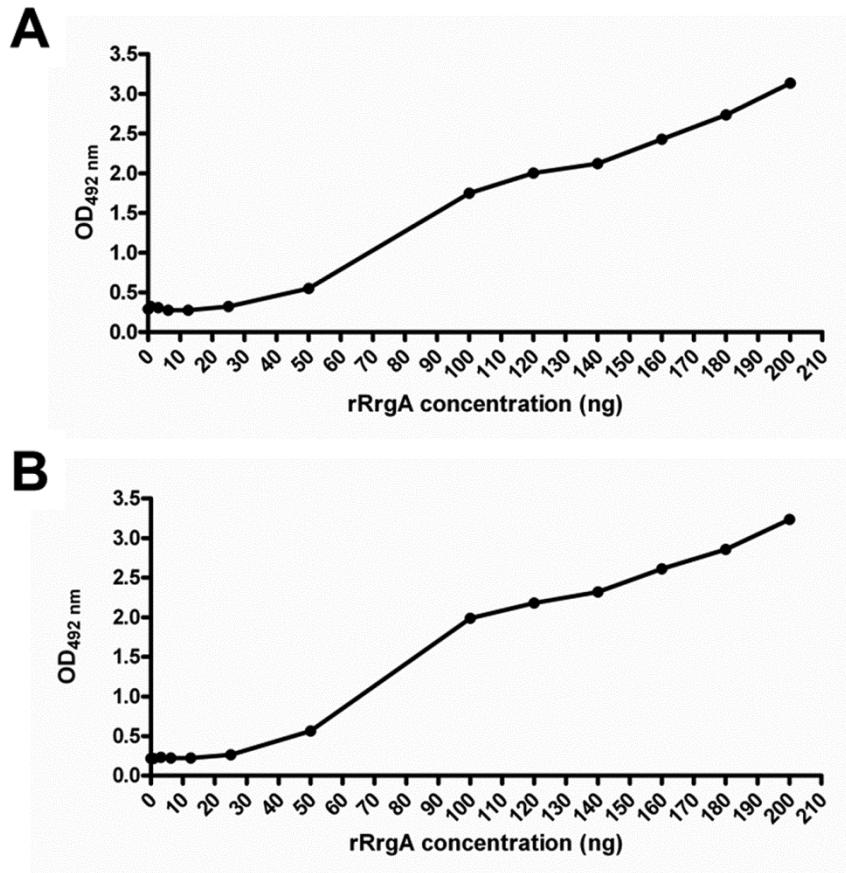


Figure S2. The recombinant RrgA protein binds to purified human CR3 as well as to CD11b I domain-GST in a concentration-dependent manner. In ELISA experiments, increasing amounts of recombinant RrgA were incubated with coated CR3 (A) or CD11b I domain-GST (B). Binding was detected by using a specific antibody against rRrgA (Rb- α RrgA) and an anti-rabbit IgG antibody HRP-conjugated. The rRrgA binding to CD11b (A) and to the CD11b I domain-GST (B) is dependent on the concentration of rRrgA.