

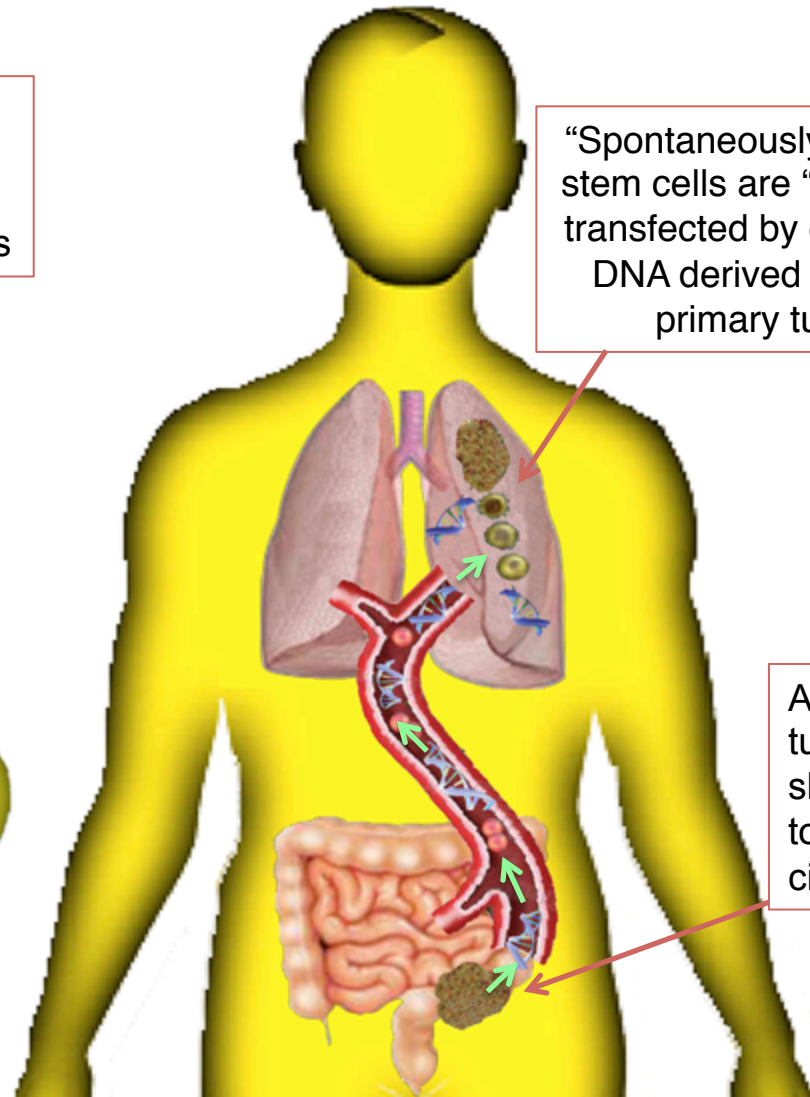
# SUPPL. FIGURE 6

Human SW480 xenograft sheds DNA to the circulation

"Carcinogen (DMH) initiated" cells are "passively" transfected by circulating DNA derived from SW480 human cells



"Spontaneously initiated" stem cells are "passively" transfected by circulating DNA derived from the primary tumor



A primary tumor sheds DNA to the circulation