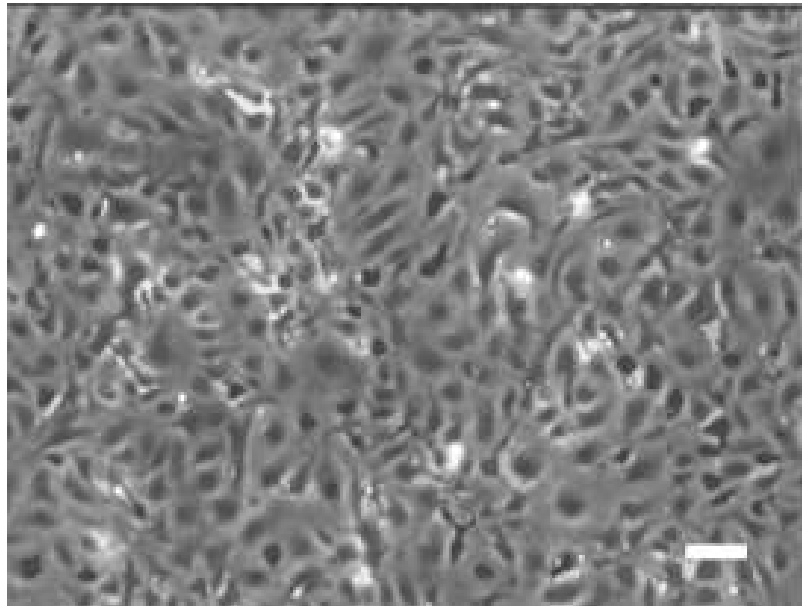


Supplemental Figure 1: *Characterization of cultured microvascular endothelial cells derived from the lung and heart. Panel A*, representative phase contrast image of LMVEC and HMVEC cultures viewed at 200X magnification. Scale bars = 250 μ m. Representative fluorescent images of endothelial cells immunofluorescently stained for vWF (*panel B*), VE-cadherin (*panel C*), or for internalization of acetylated LDL (*panel D*) viewed at 1000X magnification. Nuclei were counterstained with DAPI. Scale bars = 20 μ m.

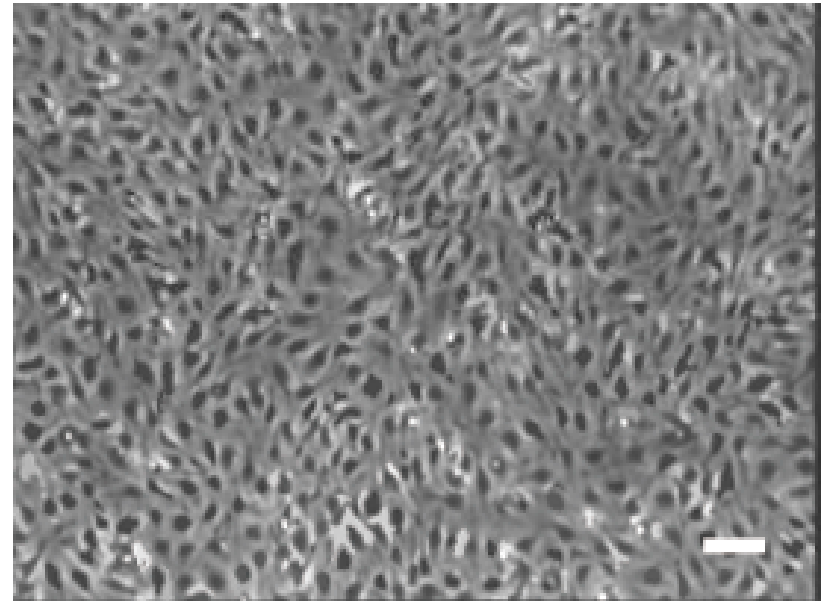
Supplemental Figure 2: *H₂O₂-induced Akt activation is delayed in HMVEC relative to LMVEC. Panel A*, equivalent amounts of LMVEC, grown in serum-reduced medium, were exposed to 0.5mM H₂O₂ for indicated time. Equivalent amounts of lysates were resolved by SDS-PAGE and immunoblotted for phosphorylated Akt (S⁴⁷³). The membranes were stripped and reprobed for total Akt. Representative immunoblots are shown, n = 3 - 6.

Supplemental Figure 1

A



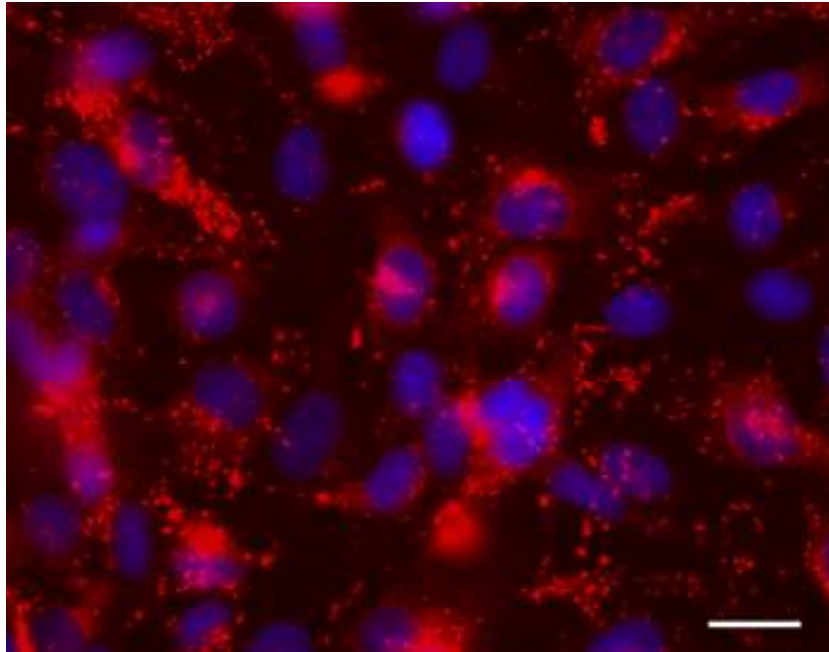
LMVEC



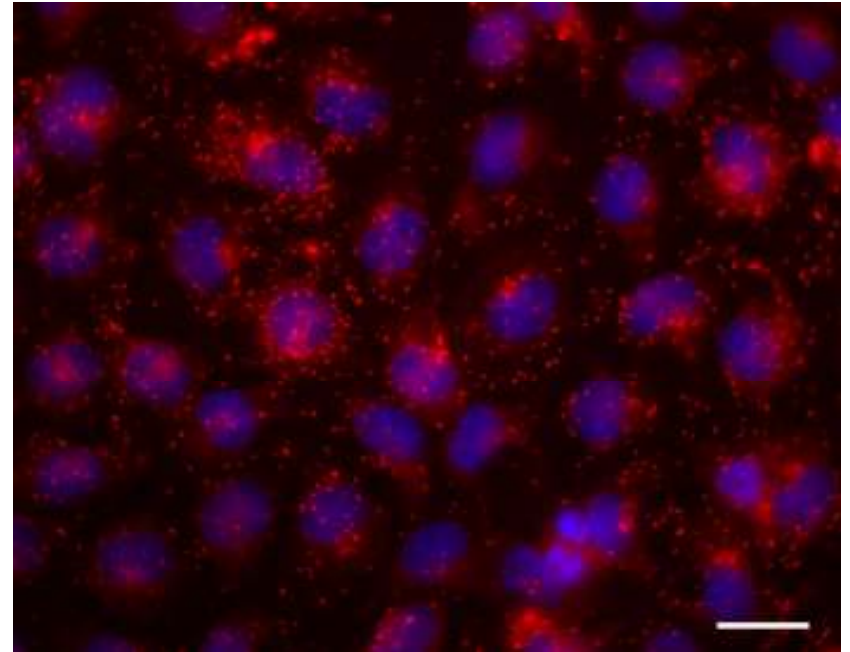
HMVEC

Supplemental Figure 1

B



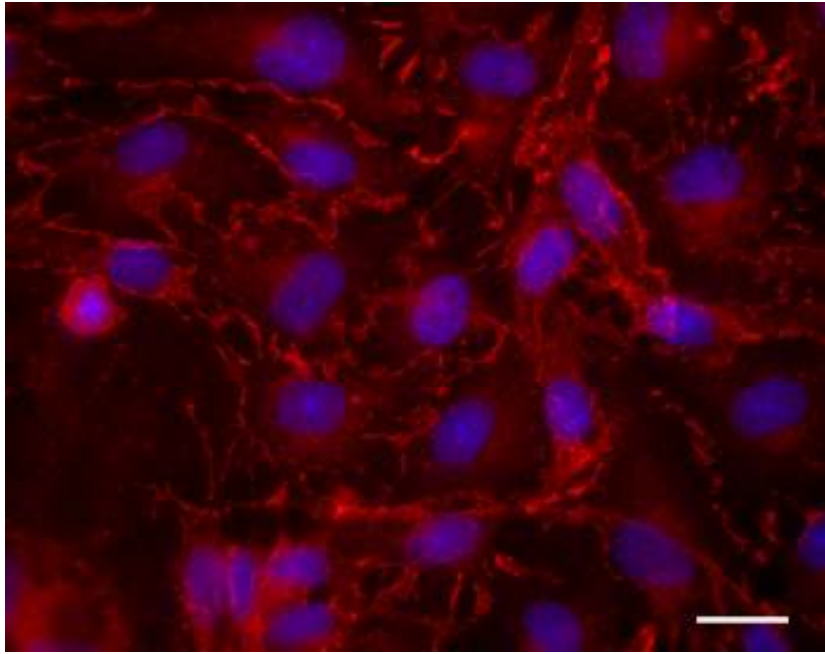
LMVEC



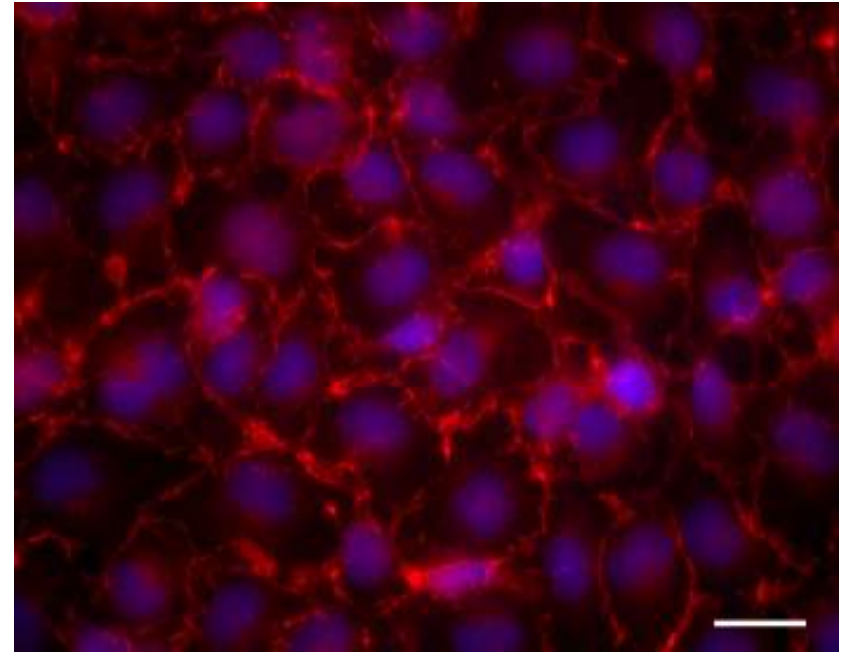
HMVEC

Supplemental Figure 1

C



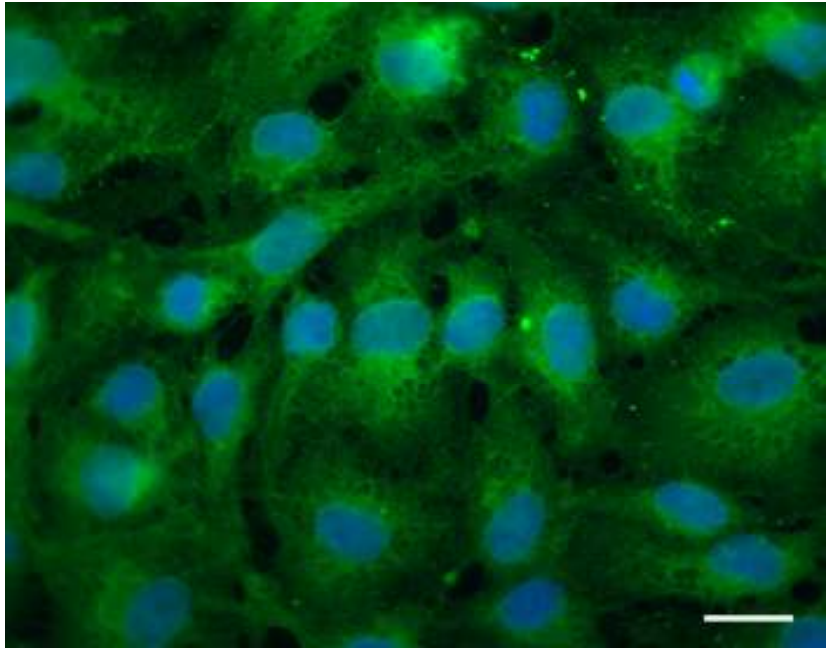
LMVEC



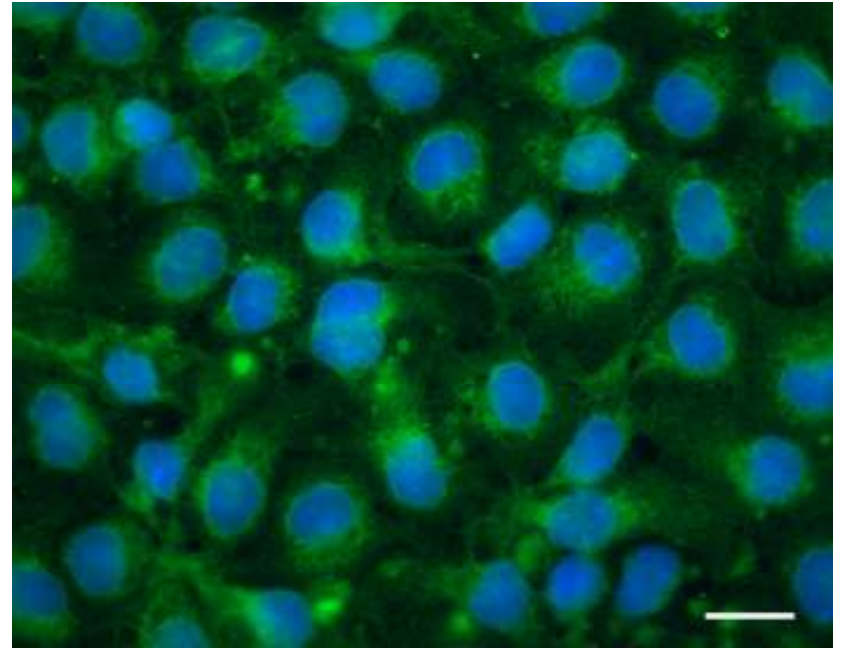
HMVEC

Supplemental Figure 1

D



LMVEC



HMVEC

Supplemental Figure 2

