

FIG. S1. INDELS. In the 1st INDEL around 15,000 – 30,000bp of pR148, pSN254 has an accessory element encoding for *floR*, *tetA/R*, and *sul* genes (A). In the type 4 secretion system, a 2nd INDEL occurs, with inserts encoding for β -lactamase resistance found in pNDM-1_Dok01, pNDM102337, and pSN254 (B). In a 3rd INDEL, pNDM102337 has a deletion, this locus encodes for the cytosine-specific DNA-methylase *dcm*, a phosphoadenosine phosphosulfate reductase family protein, and other genes of mostly unknown function (C). Each comparison is arranged relative to the CDS in pR148. The scale on the top of each comparison represents nucleotide position in pR148. Genes are color coded according to function.

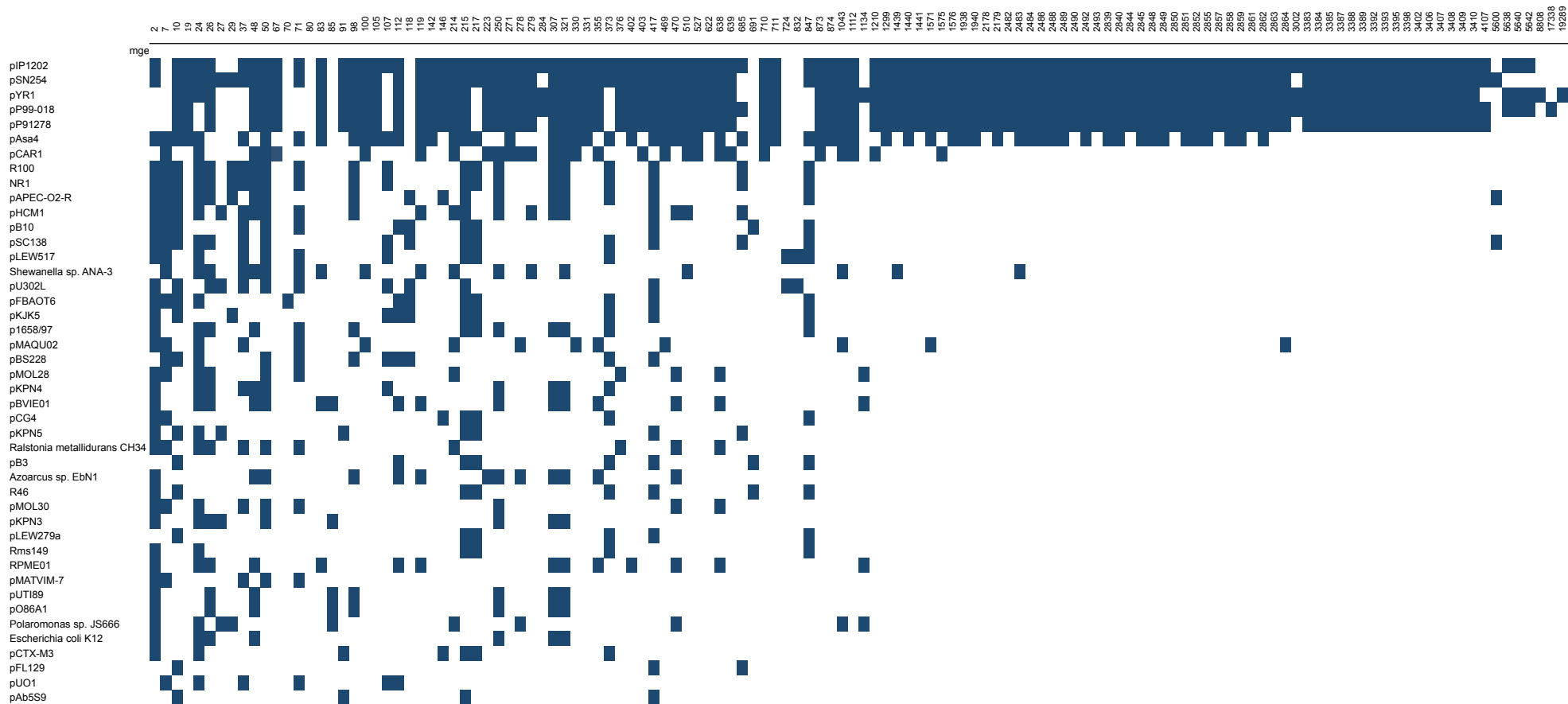


FIG. S2. Matrix data for the network representation analysis. The similarity of pR148 to other related MGEs was determined by obtaining the significance (sig) value from the probability of at least finding the common number of protein families between each pair of MGE vehicles (plasmids, phages, genomic islands) using the hypergeometric formula. MGEs with a sig value higher than 0 are shown in the matrix.