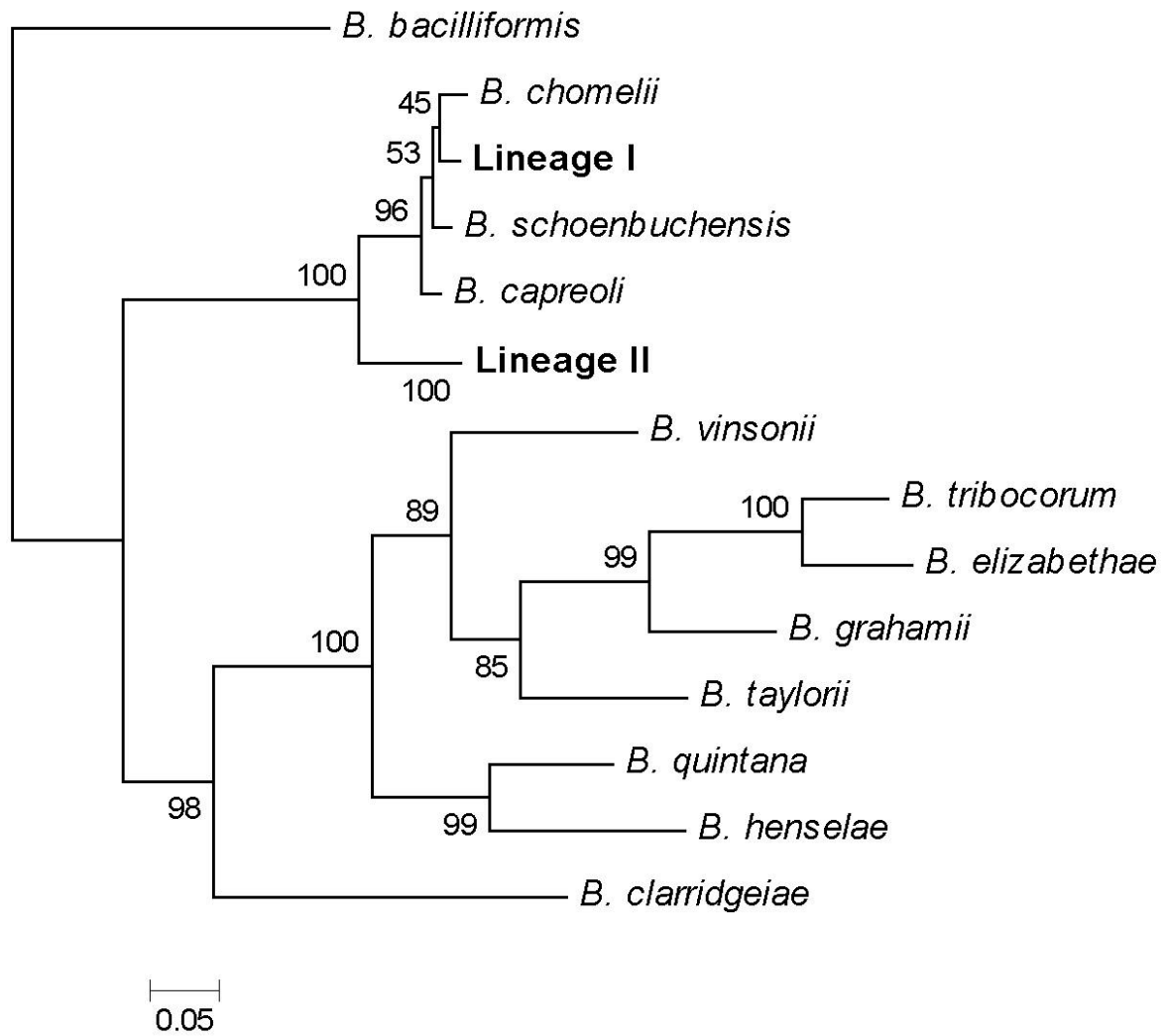


Supplementary figure 1. Concatenated phylogenetic tree of *Bartonella* type isolates and representative isolate of this study, based on fragments of 5 genes: *gltA*, *ftsZ*, *groEl*, *rpoB*, *ribC* (1701 bp in total), generated using Maximum Likelihood algorithm in PhyML with a GTR substitution model (1000 replicates, bootstrap values indicated at the nodes).



Supplementary table 1. Homology (%) of a) *ftsZ* (427 bp), b) *rpoB* (257 bp), c) *gltA* (239 bp), d) *ribC* (332 bp) and *groEl* (434 bp) gene fragments between samples analysed in this study from lineage 1 and lineage 2, and type isolates of bartonellae infecting ruminants in 5 different *loci*.

a)

	Lineage I	Lineage II	<i>B. schoenbuchensis</i>	<i>B. capreoli</i>	<i>B. chomeli</i>
Lineage II	94.6				
<i>B. schoenbuchensis</i>	98.1	94.6			
<i>B. capreoli</i>	97.9	95.3	97.4		
<i>B. chomeli</i>	98.8	95.1	97.9	98.1	
<i>B. melophagi</i>	98.1	95.6	97.7	98.4	98.4

b)

	Lineage I	Lineage II	<i>B. schoenbuchensis</i>	<i>B. capreoli</i>	<i>B. chomeli</i>	<i>B. melophagi</i>
Lineage II	96.5					
<i>B. schoenbuchensis</i>	98.8	97.7				
<i>B. capreoli</i>	98.8	97.7	100			
<i>B. chomeli</i>	98.1	96.9	99.2	99.2		
<i>B. melophagi</i>	96.9	97.7	98.1	98.1	97.3	
<i>B. bovis</i>	95.7	98.4	96.9	96.7	96.1	96.5

c)

	Lineage I	Lineage II	<i>B. schoenbuchensis</i>	<i>B. capreoli</i>	<i>B. chomeli</i>	<i>B. melophagi</i>
Lineage II	96.2					
<i>B. schoenbuchensis</i>	98.7	95.8				
<i>B. capreoli</i>	96.7	95.4	97.1			
<i>B. chomeli</i>	99.1	96.2	99.6	96.7		
<i>B. melophagi</i>	98.3	96.7	98.7	98.3	98.3	
<i>B. bovis</i>	95.4	97.9	94.1	94.6	94.6	94.6

d)

	Lineage I	Lineage II	<i>B. schoenbuchensis</i>	<i>B. capreoli</i>	<i>B. chomeli</i>	<i>B. melophagi</i>
Lineage II	93.4					
<i>B. schoenbuchensis</i>	98.8	91.9				
<i>B. capreoli</i>	98.8	91.9	99.4			
<i>B. chomeli</i>	98.5	92.5	98.5	98.5		
<i>B. melophagi</i>	97.0	91.9	96.7	96.7	96.7	
<i>B. bovis</i>	92.2	95.5	91.3	91.3	91.6	90.7

e)

	Lineage I	Lineage II	<i>B. schoenbuchensis</i>	<i>B. capreoli</i>
Lineage II	97.2			
<i>B. schoenbuchensis</i>	99.5	97.2		
<i>B. capreoli</i>	99.8	97.0	99.8	
<i>B. chomeli</i>	99.1	96.3	98.6	98.8