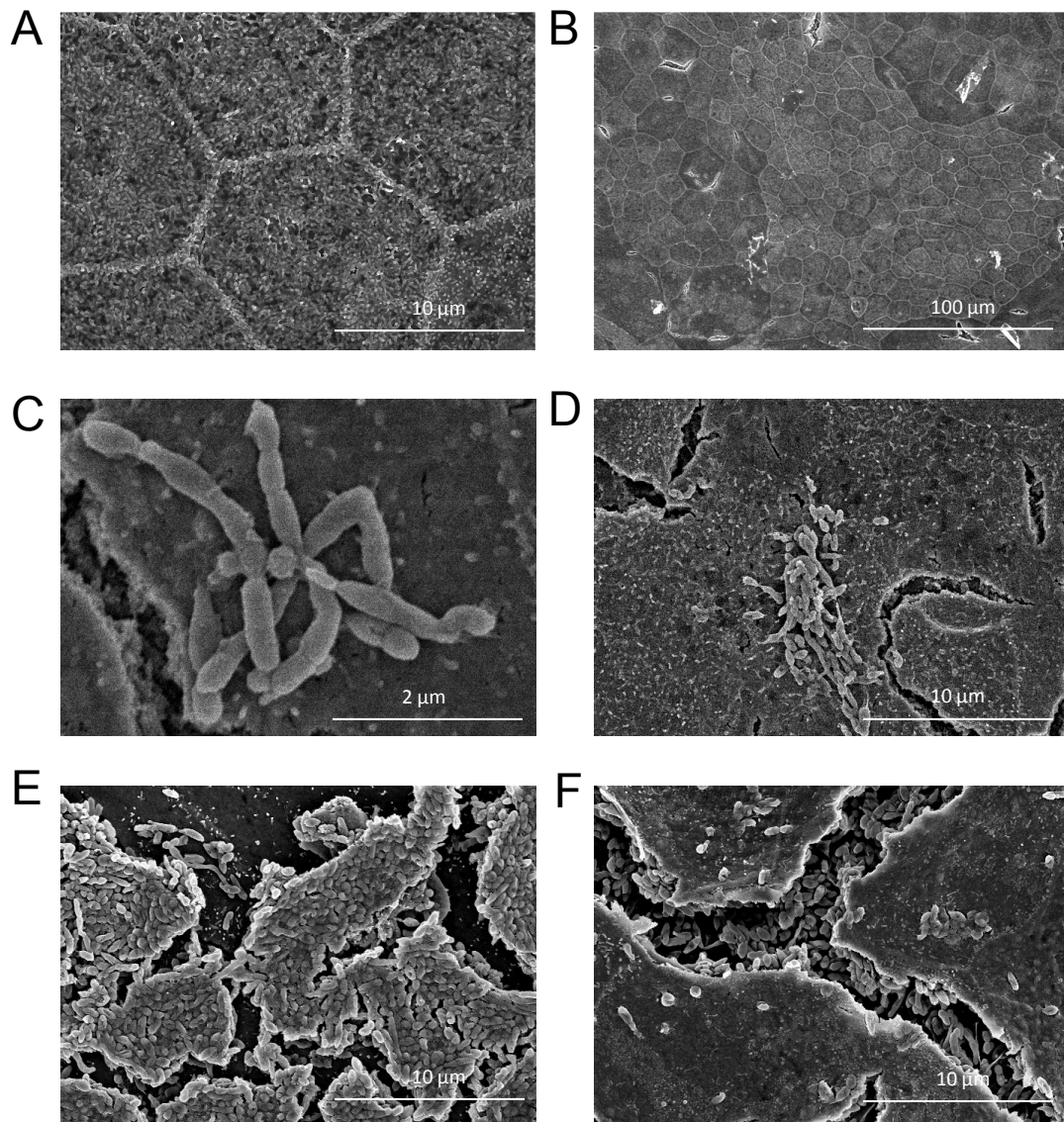


Supplemental FIG. 1. The parent strain (A, C) or the *sapA* mutant (B,D) GFP reporter strains (green) were inoculated onto NHBE cell monolayers (red), incubated for 96 hrs and monitored for colonization and epithelial cell surface changes by confocal microscopy.



Supplemental FIG. 2. SapA mediates epithelial cell surface colonization by NTHI. Polarized CMEE cells grown at an air-liquid interface (A, B) were inoculated with the parent strain (C,D) or the *sapA* mutant strain (E,F) and incubated for 24 hours. NTHI-epithelial cell interactions were monitored by scanning electron microscopy.