

Fig. E1 Lung function decline model

	Estimate	Robust S.E.	Robust z
(Intercept)	5.029	0.0822	61.2
cig.avg	-0.001	0.0002	-7.0
smoker	-0.017	0.0075	-2.3
smoker2	-0.029	0.0043	-6.7
time	-0.055	0.0023	-24.4
sex	-0.925	0.0124	-74.7
fitted.bmi	-0.076	0.0239	-3.2
age	-0.034	0.0009	-35.8
center2	0.076	0.0281	2.7
center3	0.077	0.0270	2.8
center4	-0.040	0.0290	-1.4
center5	0.141	0.0294	4.8
center6	-0.035	0.0303	-1.2
center7	0.129	0.0278	4.6
center8	0.108	0.0270	4.0
center9	0.124	0.0273	4.5
center10	0.113	0.0279	4.1
smoker:time	-0.008	0.0023	-3.6
time:sex	0.007	0.0016	4.0

Fig. E2a Epithelial staining for FOXA1 (a) minimal staining (b) moderate staining (c) intense staining (d) color segmented image

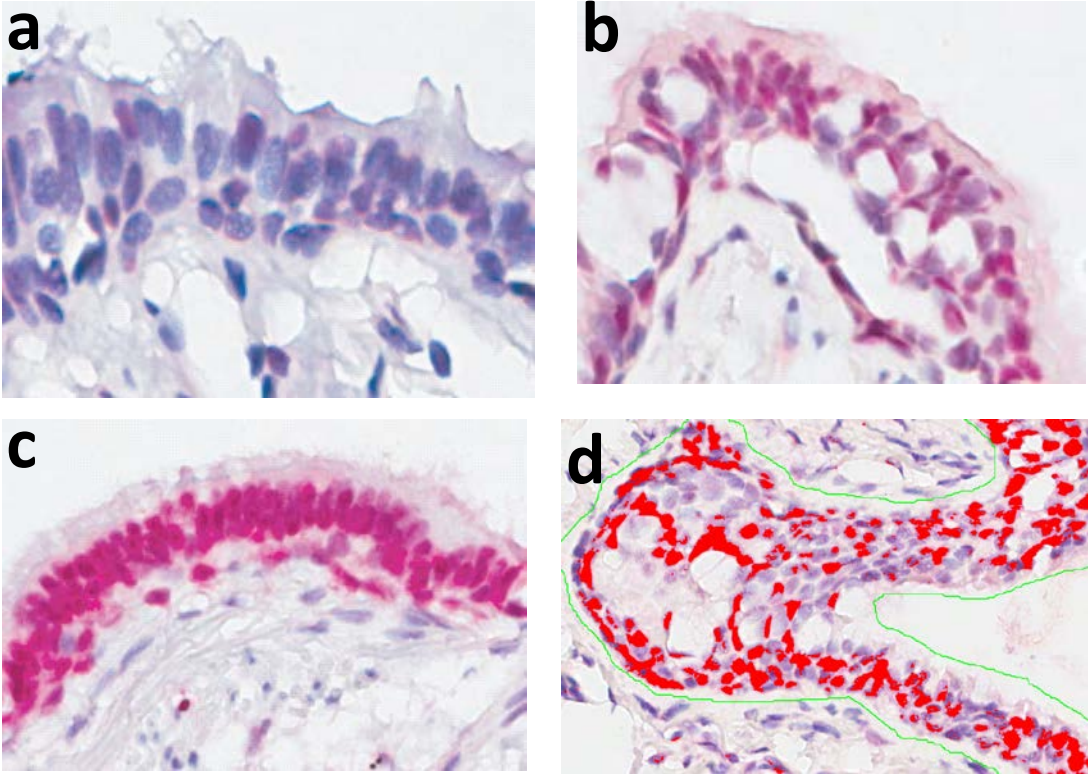


Fig. E2b Parenchymal staining for FOXA1 (a) minimal staining (b) moderate (c) intense staining and (d) color segmented image

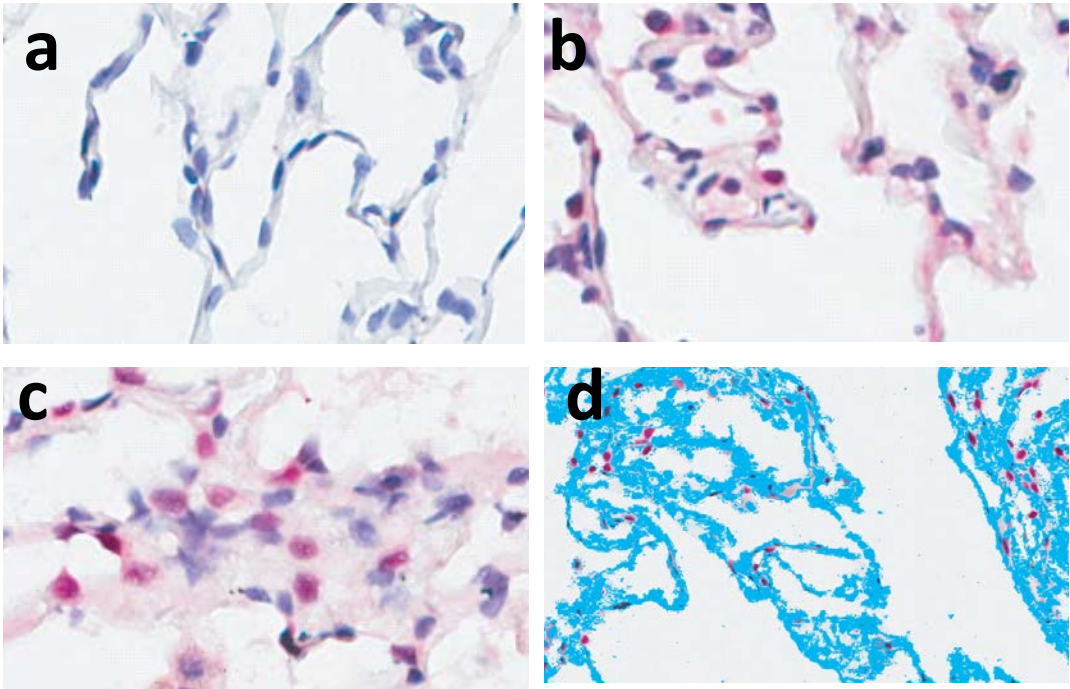


Fig. E3 Epithelial and parenchymal FOXA1 expression in the lung

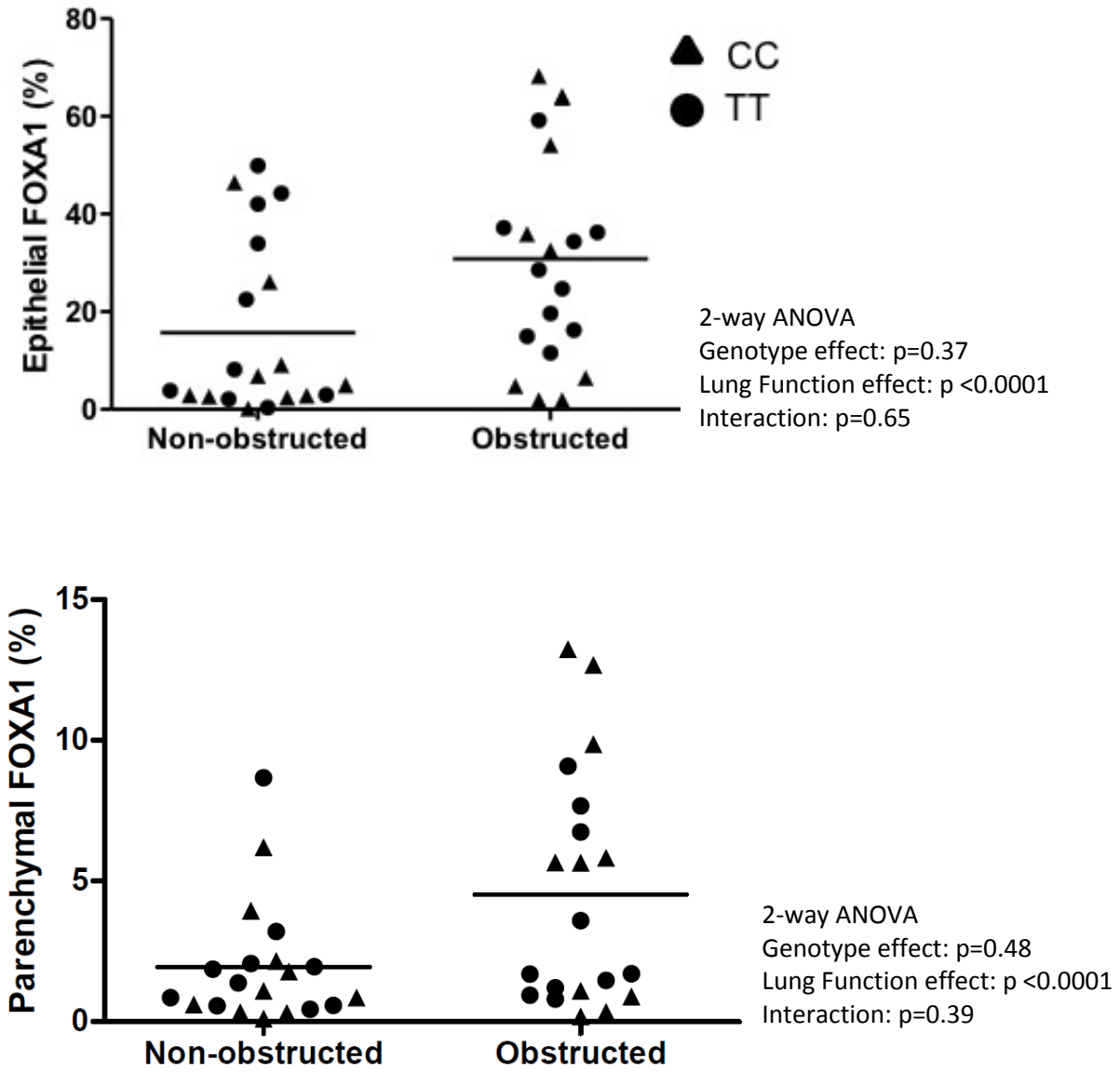


Fig. E4 Epithelial and parenchymal staining for TMEM26 in lung tissue of smokers. (a) moderate staining in airway epithelium, (b) intense staining in airway epithelium, (c) minimal staining in parenchyma (d) moderate staining in parenchyma

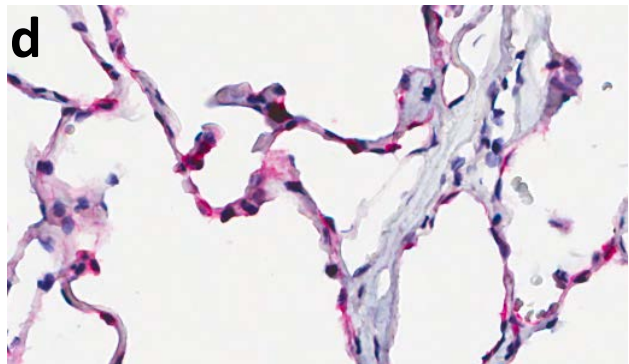
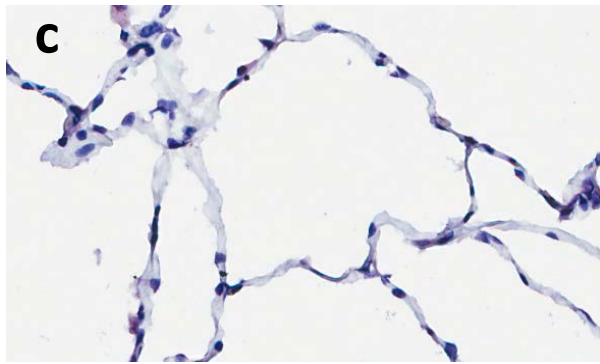
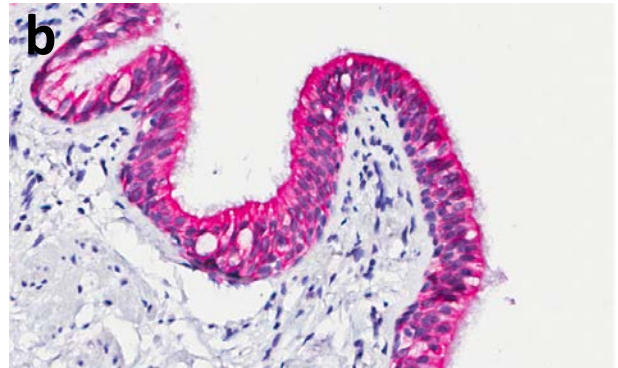
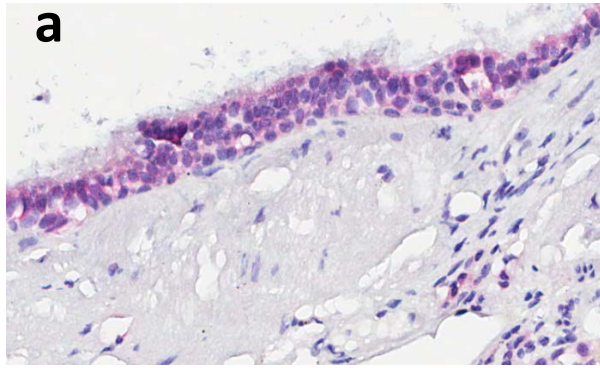
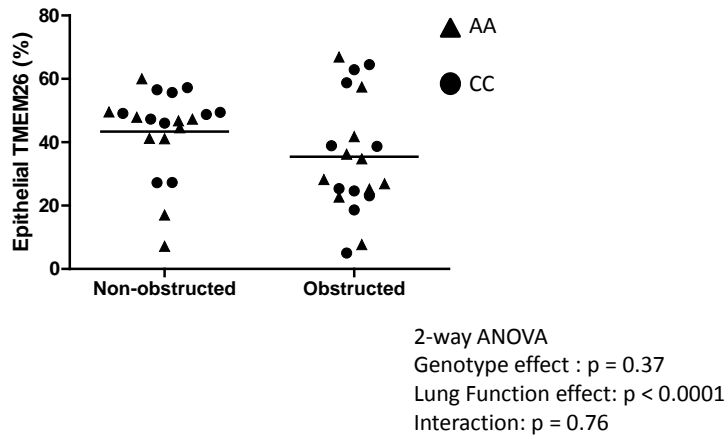


Fig. E5 Epithelial and parenchymal TMEM26 expression in the lung by lung function and genotype

Epithelial TMEM26



Parenchymal TMEM26

