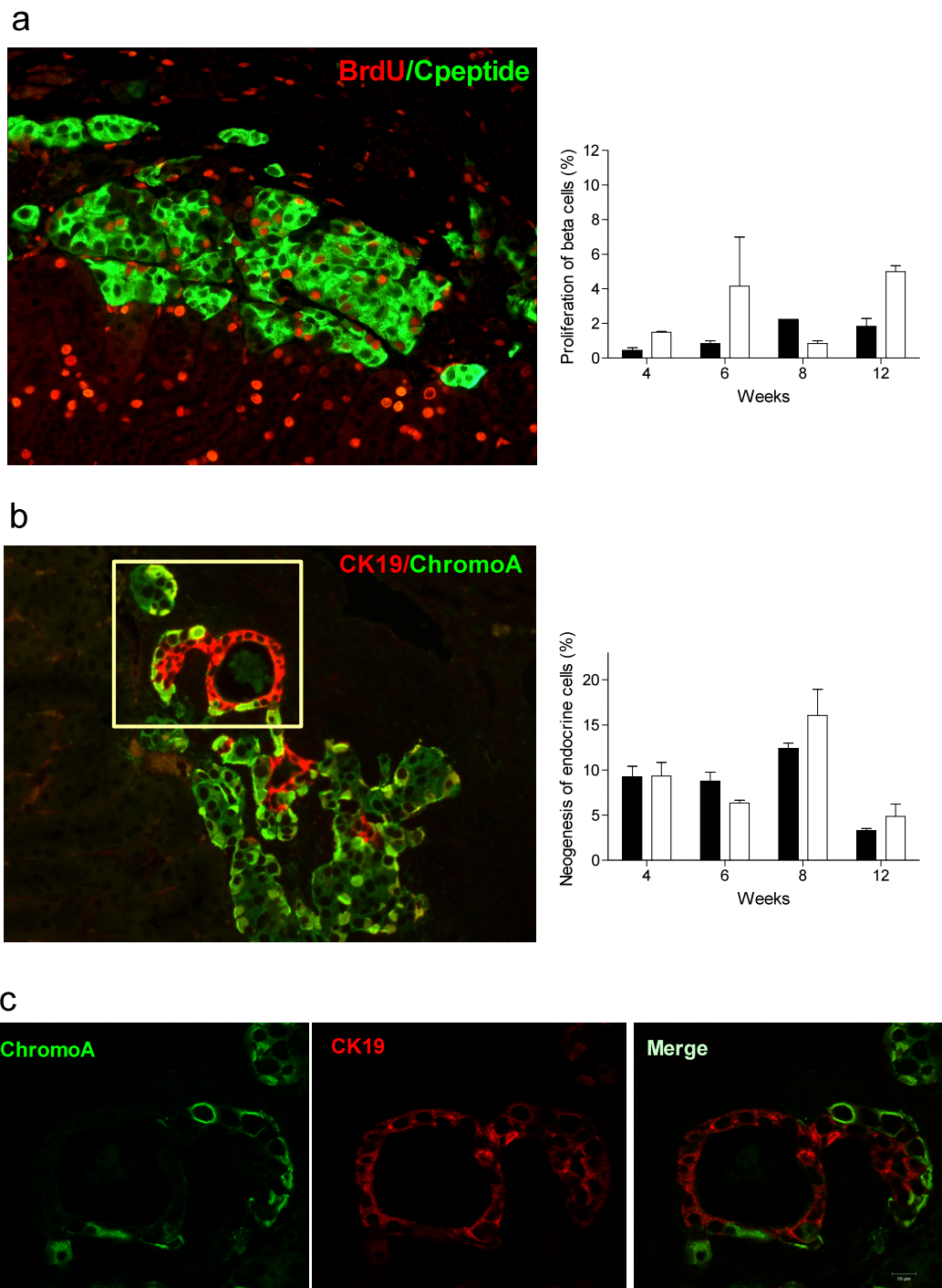


ESM Fig. 1



Kinetic study to investigate the mechanisms of endocrine cell expansion in human grafts

a Cumulative 7 day proliferation (7 days BrdU in drinking water) was assessed in paraffin embedded sections of human grafts stained with cpeptide (beta cells) and BrdU; (% double labeling/total beta cells) and **b** neogenesis was assessed with double labeling of CK19 (ductal cell marker) and chromogranin A (endocrine cell marker) at 4, 6, 8 and 12 weeks (%chromogranin A positive ductal cells/ total ductal cells) and **c** large magnification of ESM 1b in confocal microscope (Zeiss 710)