

Resting State Functional Connectivity in Preclinical Alzheimer's Disease: A Review

Supplemental Information

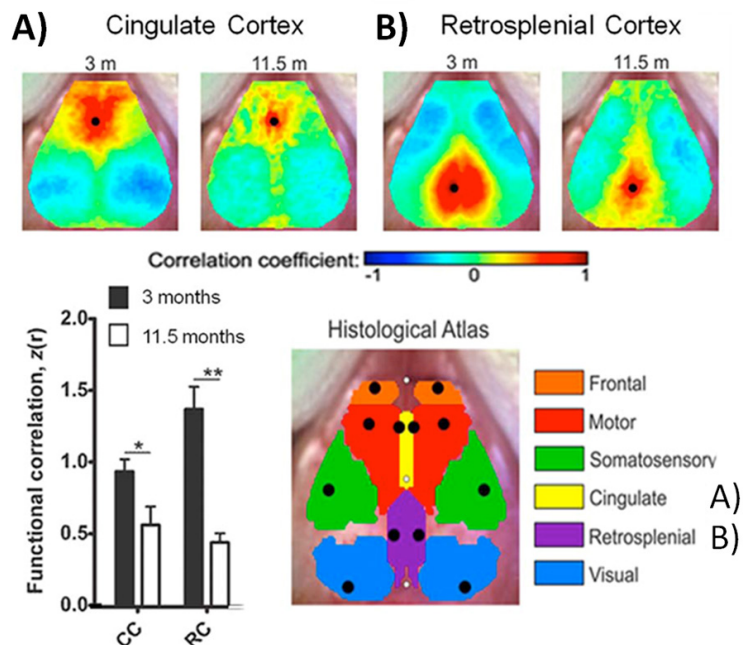


Figure S1. Loss of regional functional connectivity in mouse model of AD. Using optical imaging in a transgenic mouse model of AD, age 3 months prior to amyloid plaque deposition was compared to age 11.5 months, following amyloid plaque deposition. In both cingulate cortex (A) and retrosplenial cortex (B) amyloid deposition was accompanied by a significant decrease in connectivity, shown in the bar graphs. Adapted with permission from Bero *et al.* (1). AD, Alzheimer's disease; CC, cingulate cortex; RC, retrosplenial cortex.

1. Bero AW, Bauer AQ, Stewart FR, White BR, Cirrito JR, Raichle ME, *et al.* (2012): Bidirectional relationship between functional connectivity and amyloid-beta deposition in mouse brain. *J Neurosci.* 32:4334-4340.