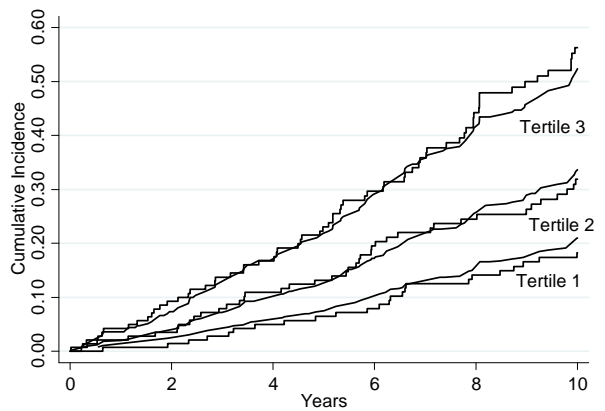


## Supplemental Figure Legend

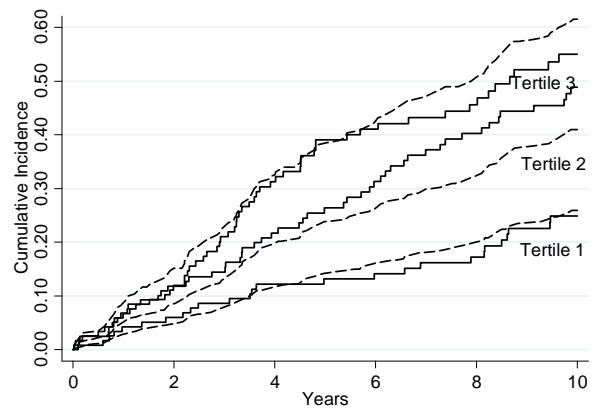
Observed and basic-model-predicted estimates of cumulative incidence of cardiovascular disease among diabetic participants initially free of cardiovascular disease over 10 years in CHS (women panel A and men panel B) and 7 years in MESA (women panel C and men panel D) according to tertile of predicted risk calculated from the basic model. Individuals were categorized into sex-specific tertiles on the basis of predicted risk from the basic model. To generate predicted curves, we categorized individuals into tertiles on the basis of predicted risk from the basic model, computed the average value of covariates within tertile, and used those values along with the original regression coefficients and baseline hazard function from the basic model. Observed risk within tertiles was calculated using the Kaplan-Meier method.

Panel A



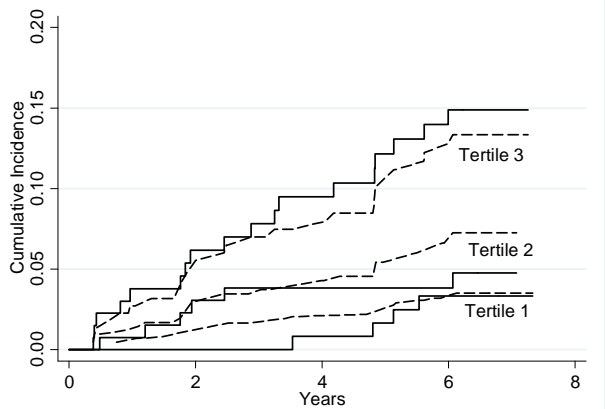
Number at risk						
Tertile 1	142	139	132	122	107	97
Tertile 2	142	134	118	99	86	72
Tertile 3	142	124	106	81	60	41

Panel B



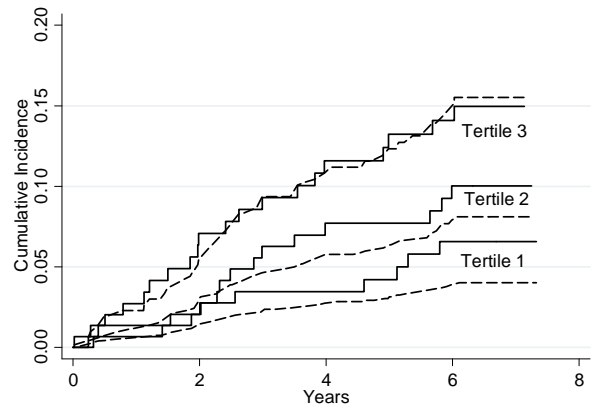
Number at risk						
Tertile 1	119	108	97	87	80	61
Tertile 2	119	101	85	70	58	45
Tertile 3	118	100	73	56	44	28

Panel C



Number at risk					
Tertile 1	133	129	120	108	0
Tertile 2	133	125	118	106	0
Tertile 3	133	117	106	93	0

Panel D



Number at risk					
Tertile 1	148	140	132	117	0
Tertile 2	148	140	128	115	0
Tertile 3	148	127	115	99	0