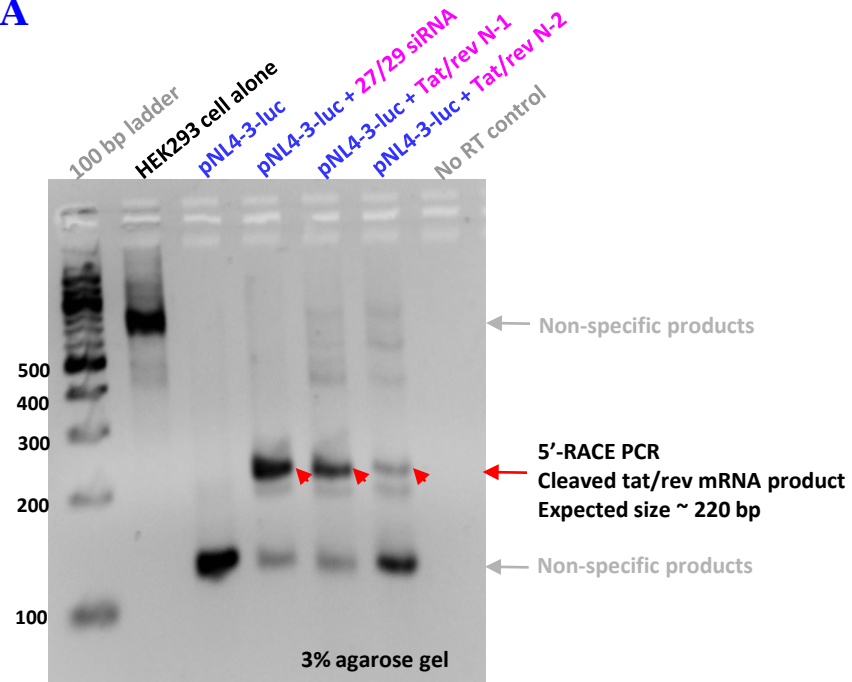


Figure S2

5'- RACE PCR to verify the cleavage of *tat/rev* mRNA & TNPO3 mRNA

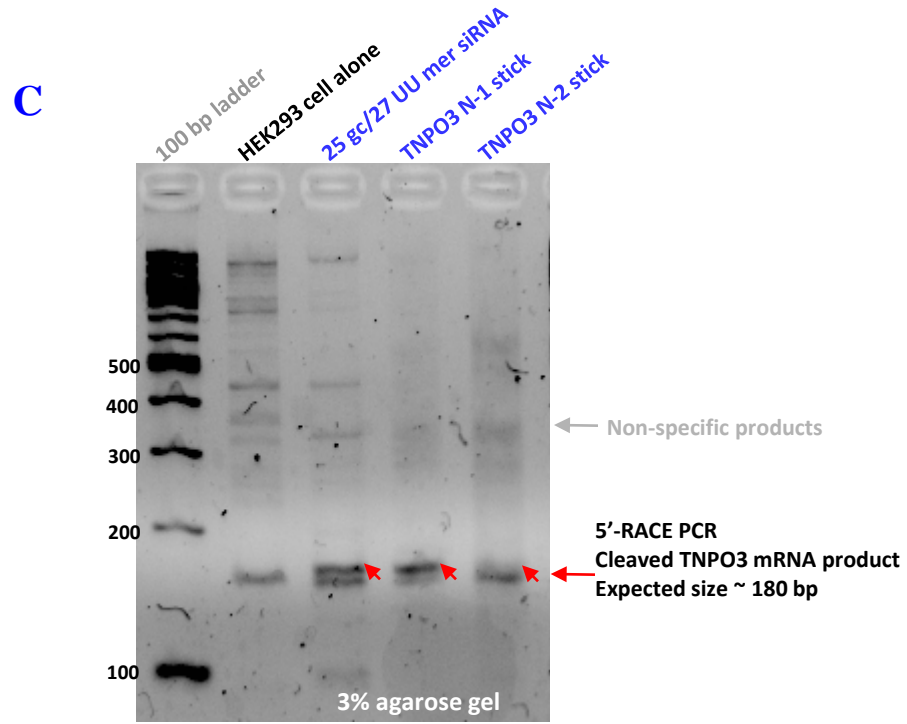
A



B. mRNA cleavage site from A-1-stick-tat/rev siRNA conjugate (TA clone)

Targeted sequence	mRNA cleavage site
<p>5'-GCGGAGACAGCGACGAAGAGCTCATCAGA -3'</p> <p>Tat/rev N-1</p> <p>3'-CAUUGAAGUCUUCUGCG XXXXX CGCCUCUGUCGUCUUCUCGAGUAGU -5'</p> <p>5'-GCGGAGACAGCGACGAAGAGCUCUCAUUA UU-3'</p> <p>AS</p> <p>S</p> <p>Dicer entry</p>	<p>5'-GCGGAGACAGCGACGAAGAGCTCATCAGA -3'</p> <p>5'-AGCGACGAAGAGCUCUCAUUA UU-3'</p> <p>3'-UGUCGUCUUCUCGAGUAGU 5'</p> <p>10 nt</p>
<p>Tat/rev N-2</p> <p>3'-CAUUGAAGUCUUCUGCG XXXXX ACUACUCGAGAAGCAGCGACAGAGGCG -5'</p> <p>5'-UGAUGAGCUCUUCGUCGUCUCUCCGC UU -3'</p> <p>AS</p> <p>S</p>	<p>5'-GAGACAGCGACGAAGAGC TCA -3'</p> <p>3'-GC CUCUCUGCGUCGCUUCUCGA -5'</p> <p>10 nt</p> <p>5'-GGAGACAGCGACGAAGAGC UC -3'</p> <p>3'-CG CCUCUCUGCGUCGCUUCUCG -5'</p> <p>10 nt</p>

Figure S2



D. mRNA cleavage site from A-1-stick-TNPO3 siRNA conjugate (TA clone)

Targeted sequence	mRNA cleavage site
<p>5'- GGAGCAAAGCCGACATTGCAGCTCGTGTACCAGGC -3'</p> <p>TNPO3 N-1</p> <p>3'-CAUGUACAGCUACCG-5' (Linker 7-C3, 16 nt stick)</p> <p>5'-CAAAGCCGACAUUCGAGCUCGUGUAUU-3'</p> <p>AS (red), S (blue)</p> <p>Dicer entry</p>	<p>mRNA cleavage site</p> <p>GGAGCAAAGCCGACATTGCAGCTCGTGTACCAGGC</p> <p>5'-CGACAUUGCAGCUCGUGUAUU-3'</p> <p>3'-CGGCUGUAACGUCGAGCACAU-5'</p> <p>10 nt</p>
<p>TNPO3 N-2</p> <p>3'-CAUGUACAGCUACCG-5' (Linker 7-C3, 16 nt stick)</p> <p>5'-GCCUGGUACACGAGCUGCAAUGUCG-3'</p> <p>AS (red), S (blue)</p>	<p>5'-UGCAGCUCGUGUACCAGGC-3'</p> <p>3'-UAACGUCGAGCACAUUGGUCCG-5'</p> <p>10 nt</p> <p>5'-AUUGCAGCUCGUGUACCAGGC-3'</p> <p>3'-UGUAACGUCGAGCACAUUGGUCCG-5'</p> <p>10 nt</p>