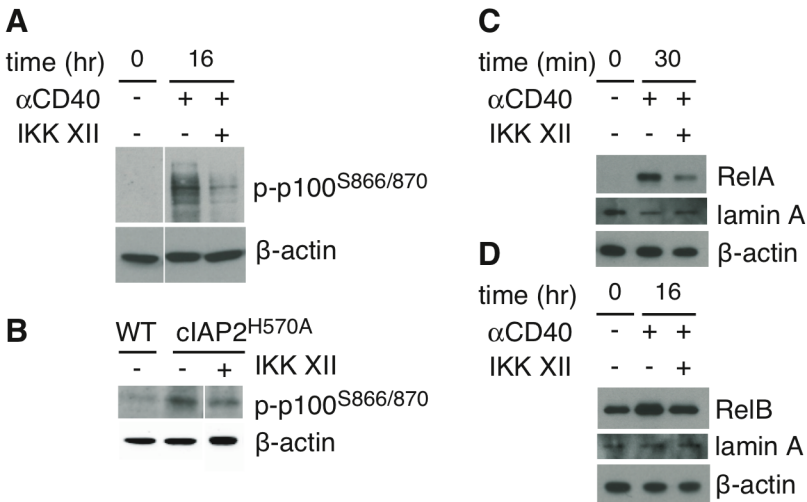


Supplemental Figure 1

Supplemental Figure 1. IKK XII inhibits NF- κ B activation.

(A) Immunoblot of WT splenocytes incubated for 16 hr with anti-CD40 (0.3 μ g/ml) in the absence or presence of IKK XII (0.5 μ M). β -actin expression was used as loading control. (B) p100 phosphorylation was detected by immunoblot in T cells freshly purified or incubated for 24 hr with IKK XII (1 μ M). β -actin expression was used as loading control. RelA (C) and RelB (D) were detected by immunoblot in nuclear extracts of splenocytes incubated respectively for 30 min or 16 hr with anti-CD40 (0.3 μ g/ml) in the absence or presence of IKK XII (0.5 μ M). Lamin A and β -actin were used as loading control. Lanes were rearranged for clarity.