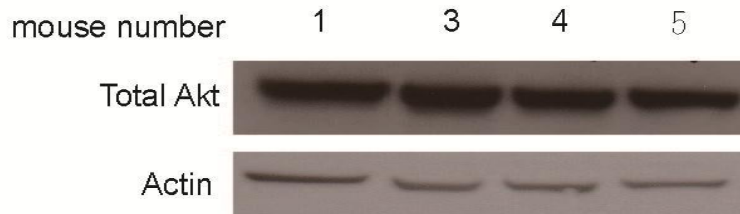


Supplementary Figure 1

The Akt levels in three more fasted WT mice were measured and compared to the first mouse (the one with higher level) to show that the higher level of Akt is more representative for mouse WT mice.



Supplementary Figure 2

Wild type and *Tsc2*^{+/-} mice were fasted for 24 hours or fasted for 24 hours and re-fed for 8 hours prior to sacrifice. Western blotting was performed on the liver tissues to detect phosphorylated S6 ribosomal protein (n=7 in wild type fasted group, n=6 in wild type fasted/re-fed group, n=6 in *Tsc2*^{+/-} group, and n=6 in *Tsc2*^{+/-} group).

