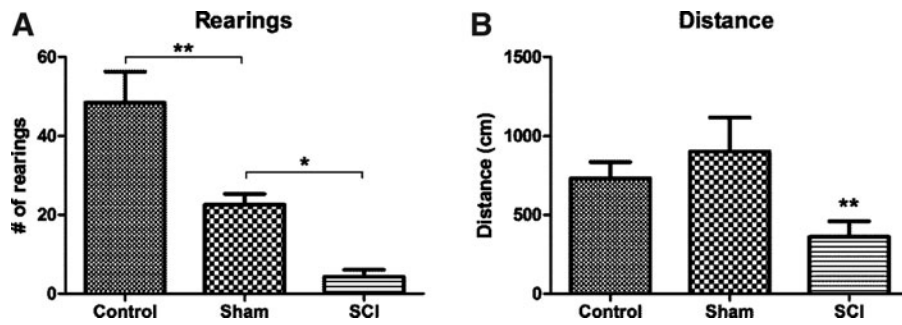


Supplementary Data



SUPPLEMENTARY FIG. S1. Open field analysis 1 week upon surgery. When tested in an open field apparatus, rats with a laminectomy (sham) performed significantly less rearing than control animals (rats without any surgery) (A). Both control and sham animals covered approximately the same distance (B) and spinal cord injury (SCI) animals presented significantly less distance covered and rearings. Values are shown as mean ± SEM, * $p < 0.05$; ** $p < 0.01$.