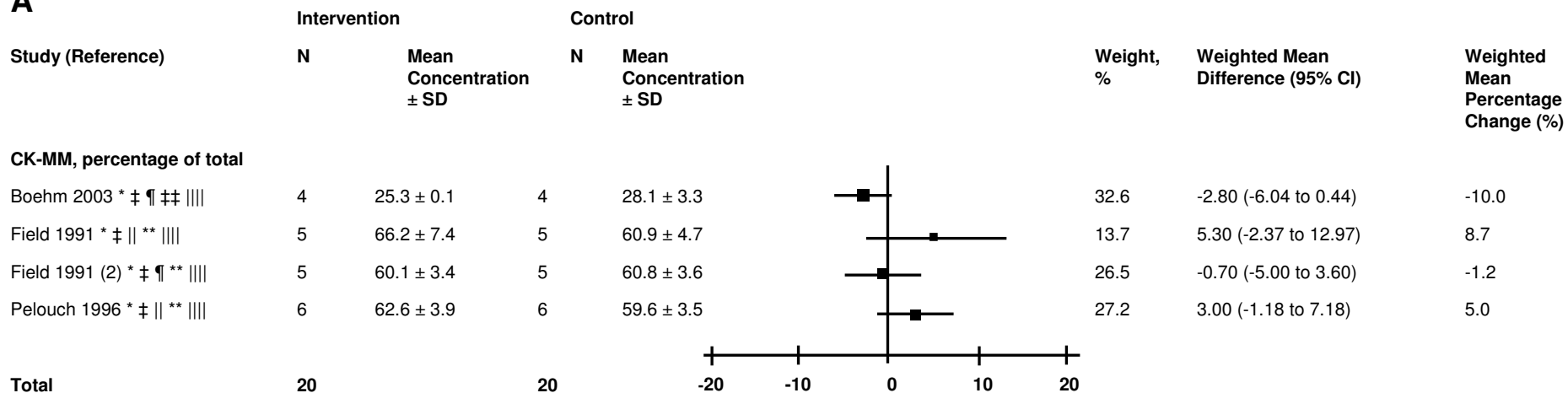
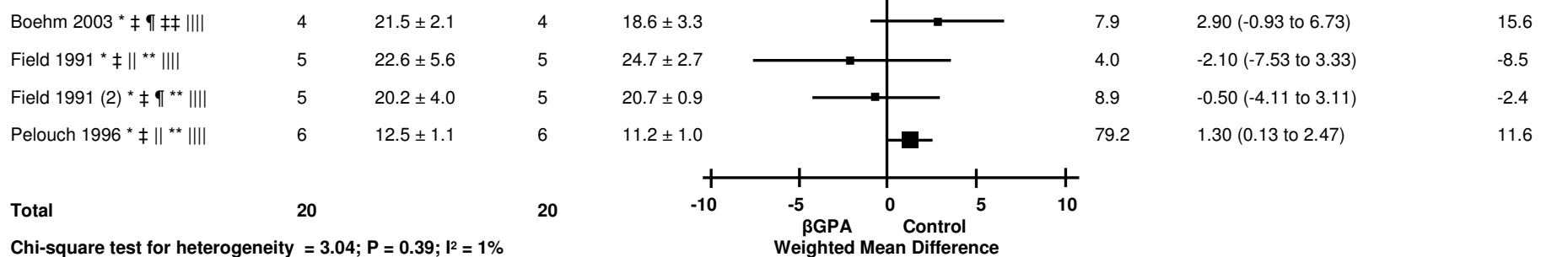


A



Chi-square test for heterogeneity = 6.76; P = 0.08; I² = 56%

CK-MB, percentage of total

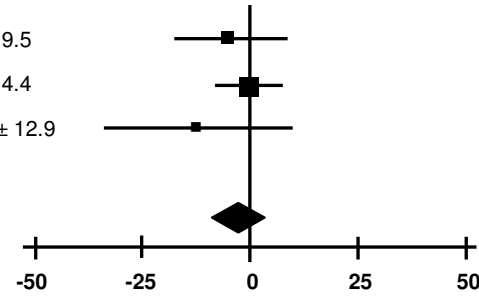


Chi-square test for heterogeneity = 3.04; P = 0.39; I² = 1%

C

Study (Reference)	Intervention		Control		Weight, %	Weighted Mean Difference (95% CI)	Weighted Mean Percentage Change (%)
	N	Mean Concentration ± SD	N	Mean Concentration ± SD			
Citrate synthase, $\mu\text{mol}/\text{min}$ per g wet weight							
Field 1991 * ‡ **	5	55.3 ± 10.6	5	60.6 ± 9.5	24.9	-5.30 (-17.80 to 7.20)	-8.7
Field 1991 (2) * ‡ ¶ **	5	62.3 ± 7.5	5	62.3 ± 4.4	66.3	0.00 (-7.67 to 7.67)	0.0
Shoubridge 1985 * ‡ **	5	98.7 ± 20.3	5	111.0 ± 12.9	8.8	-12.30 (-33.38 to 8.78)	-11.1
Total	15		15		100.0	-2.40 (-8.64 to 3.84)	-6.6

Chi-square test for heterogeneity = 1.43; P = 0.49; I² = 0%



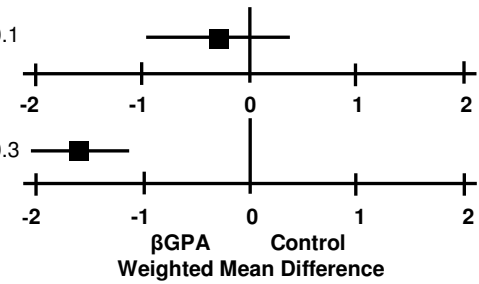
Test for overall effect:
Z = 0.75; P = 0.45

Hexokinase, $\mu\text{mol}/\text{g}$ wet weight

Shoubridge 1985 * ‡ **	4	5.8 ± 0.7	4	6.1 ± 0.1	100.0	-0.27 (-0.96 to 0.42)	-4.9
---------------------------	---	-----------	---	-----------	-------	-----------------------	------

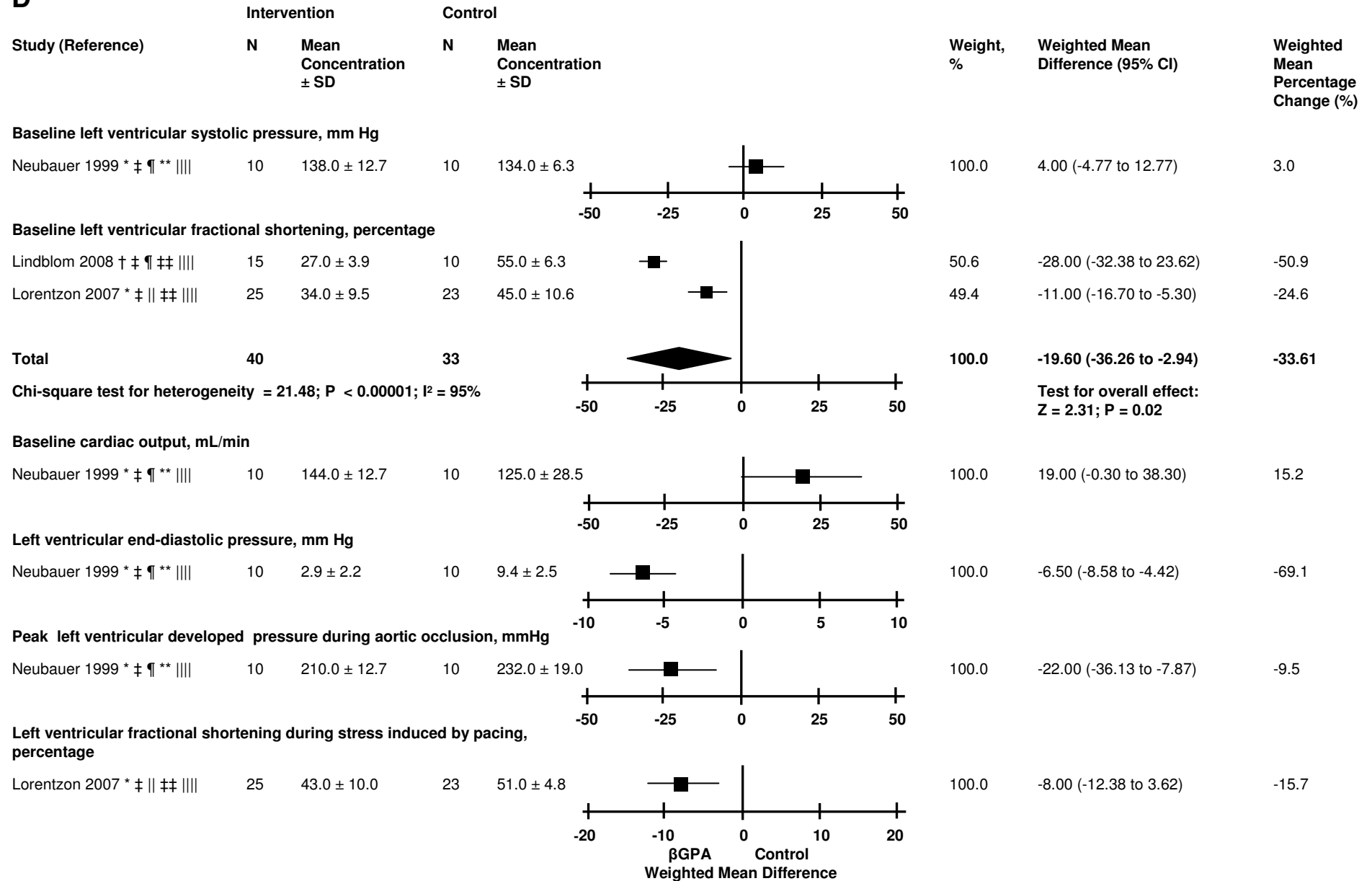
Hexokinase, U/g wet weight

O'Gorman 1997 * ‡ ‡‡ ¶¶	5	1.4 ± 0.4	5	3.0 ± 0.3	100.0	-1.60 (-2.04 to -1.16)	-53.3
----------------------------	---	-----------	---	-----------	-------	------------------------	-------

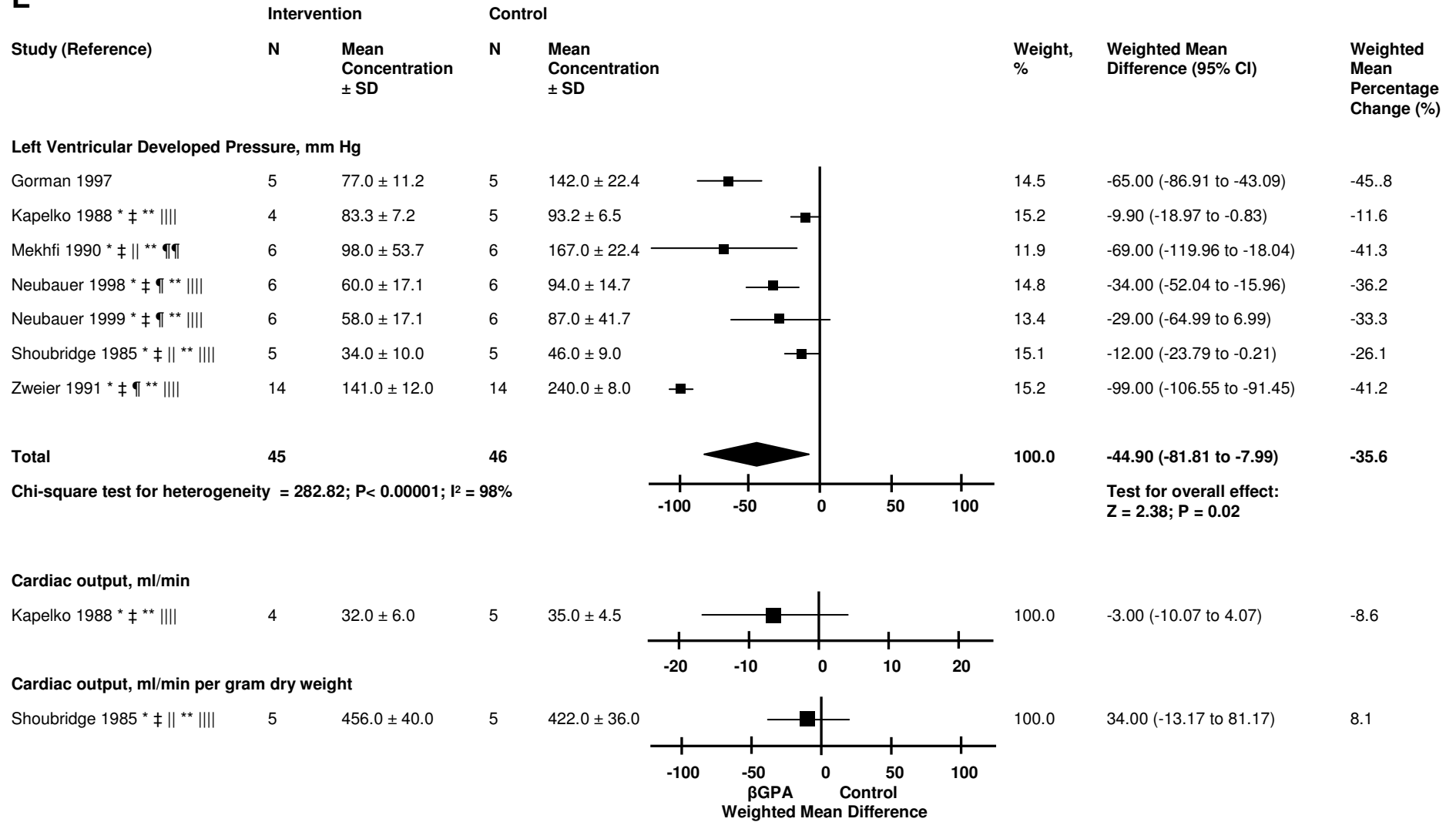


βGPA Control
Weighted Mean Difference

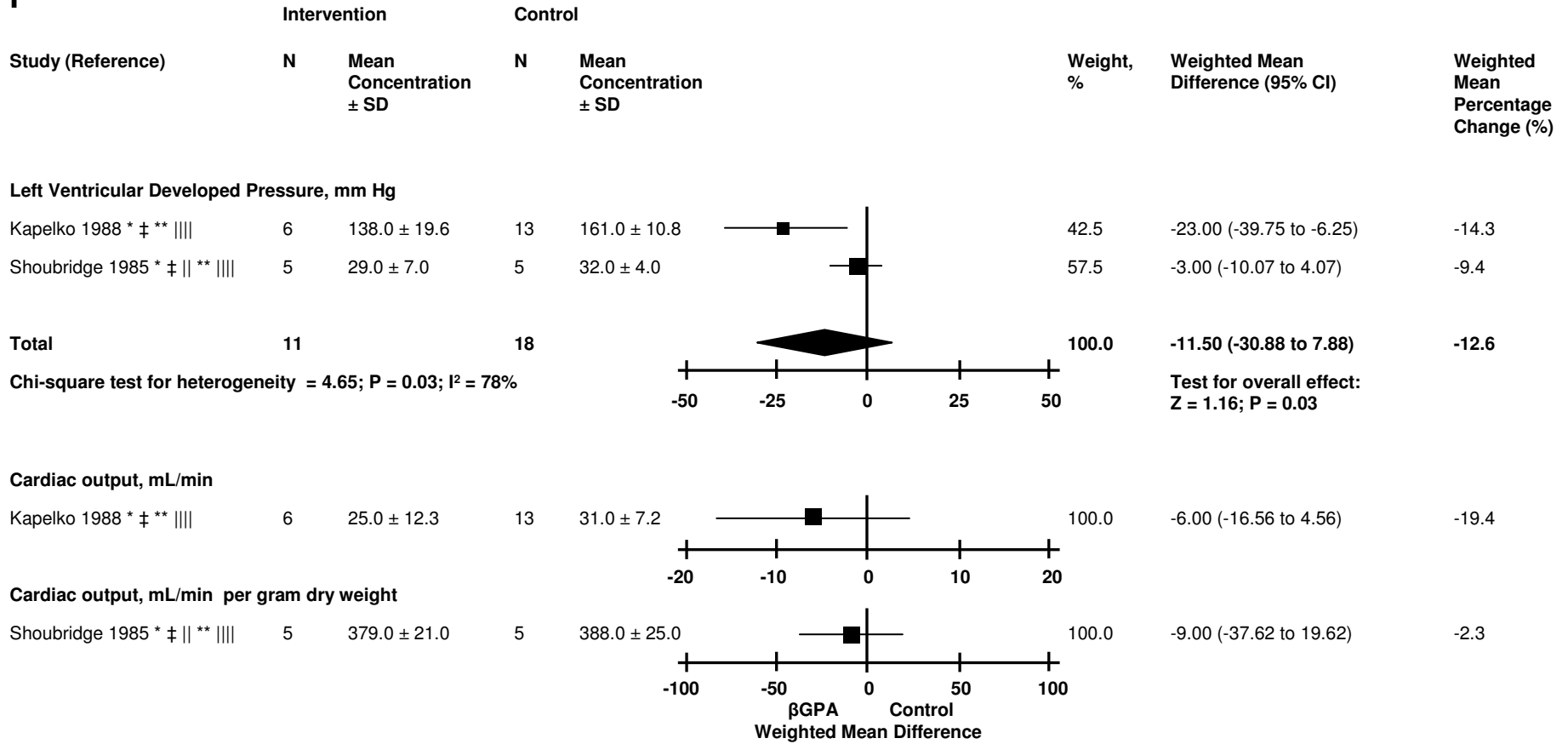
D



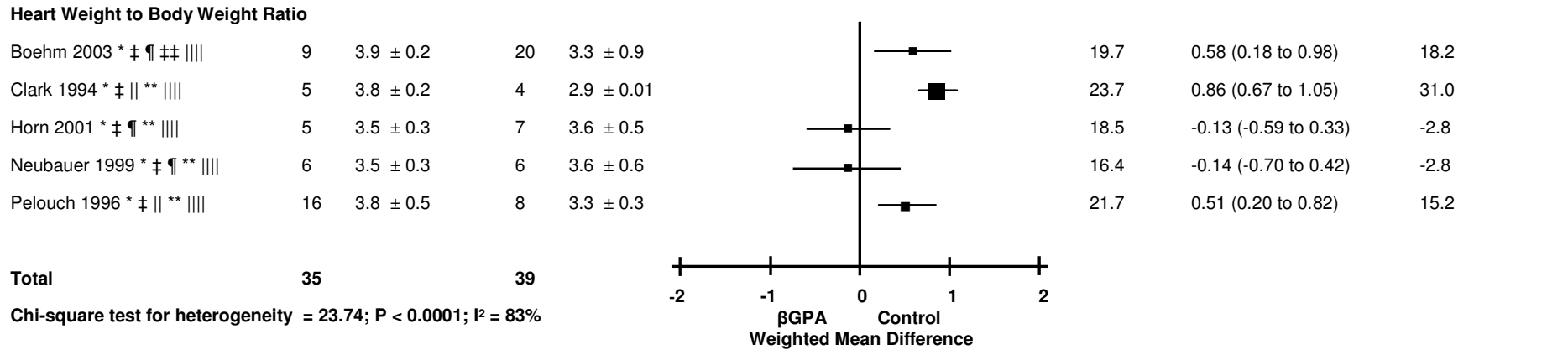
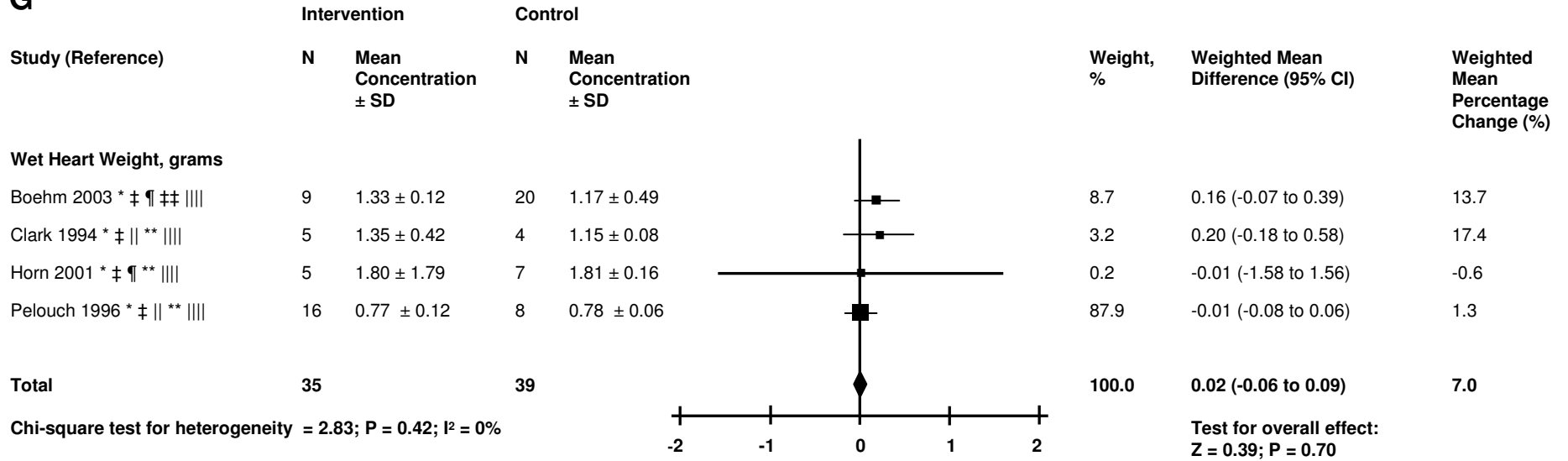
E



F

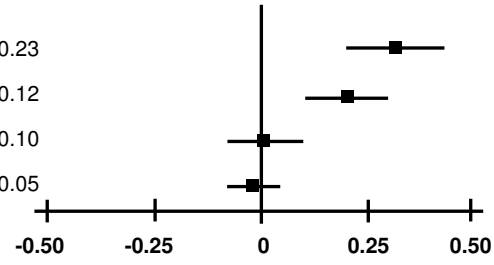


G



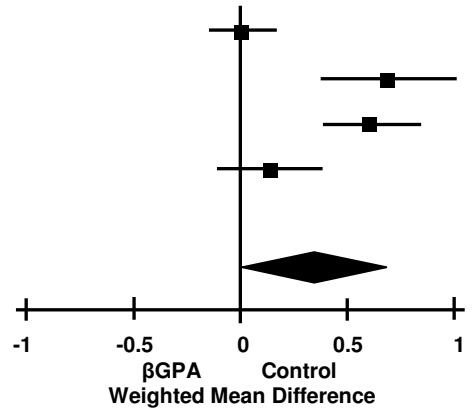
H

Study (Reference)	Intervention		Control		Weight, %	Weighted Mean Difference (95% CI)	Weighted Mean Percentage Change (%)
	N	Mean Concentration ± SD	N	Mean Concentration ± SD			
Left Ventricle Weight, grams							
Lorentzon 2007 * ‡ ‡‡	15	1.25 ± 0.04	15	0.93 ± 0.23	23.5	0.32 (0.20 to 0.44)	34.4
Mekhfi 1990 * ‡ ** ¶¶	12	1.01 ± 0.12	12	0.80 ± 0.12	24.8	0.21 (0.11 to 0.31)	26.3
Neubauer 1999 * ‡ ¶¶ **	6	0.92 ± 0.05	6	0.91 ± 0.10	25.1	0.01 (-0.08 to 0.10)	1.1
Pelouch 1996 * ‡ **	16	0.42 ± 0.09	8	0.43 ± 0.05	26.6	-0.02 (-0.07 to 0.04)	-2.3
Total	49		41				



Chi-square test for heterogeneity = 36.11; P < 0.00001; I² = 92%

Study (Reference)	Intervention		Control		Weight, %	Weighted Mean Difference (95% CI)	Weighted Mean Percentage Change (%)
	N	Mean Concentration ± SD	N	Mean Concentration ± SD			
Left Ventricle Weight to Body Weight Ratio							
Adams 1995 * § **	8	2.2 ± 0.2	8	2.2 ± 0.2	26.7	0.00 (-0.15 to 0.15)	0.0
Lorentzon 2007 * ‡ ‡‡	15	2.8 ± 0.2	15	2.1 ± 0.6	23.1	0.70 (0.39 to 1.01)	33.3
Mekhfi 1990 * ‡ ** ¶¶	12	2.7 ± 0.2	12	2.1 ± 0.2	25.3	0.62 (0.40 to 0.84)	28.6
Pelouch 1996 * ‡ **	16	2.0 ± 0.4	8	1.9 ± 0.2	24.9	0.15 (-0.09 to 0.39)	5.3
Total	45		39		100.0	0.36 (0.01 to 0.71)	19.3



Test for overall effect:
Z = 2.00; P = 0.05