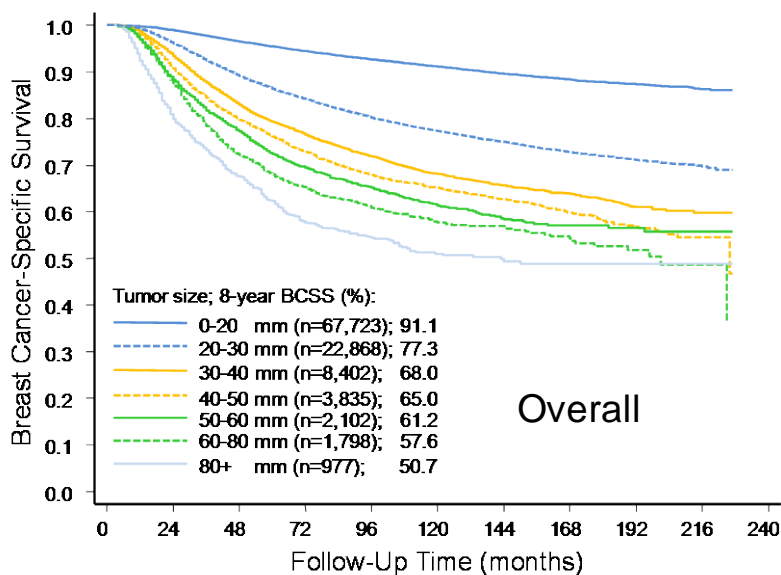
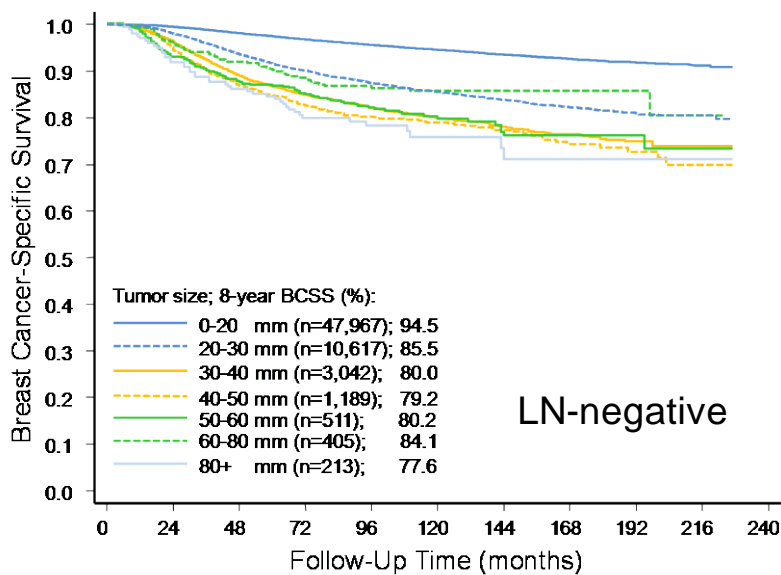


**eFigure 1. Kaplan-Meier curves stratified by categorical tumor size.** Overall (A), lymph node (LN)-negative (B), and LN-positive (C) patients from SEER were stratified into seven categories, 0-20 mm, 20-30 mm, 30-40 mm, 40-50 mm, 50-60 mm, 60-80 mm, and >80mm. The 8-year survival is calculated by life-table method.

A



B



C

