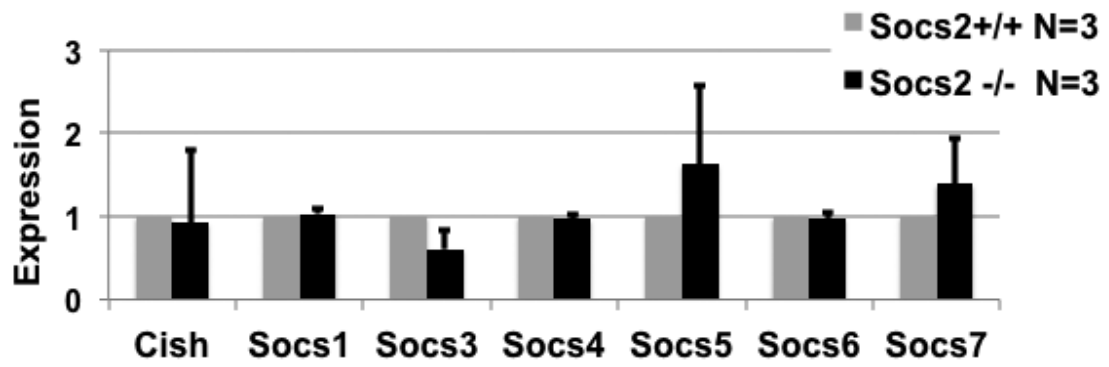
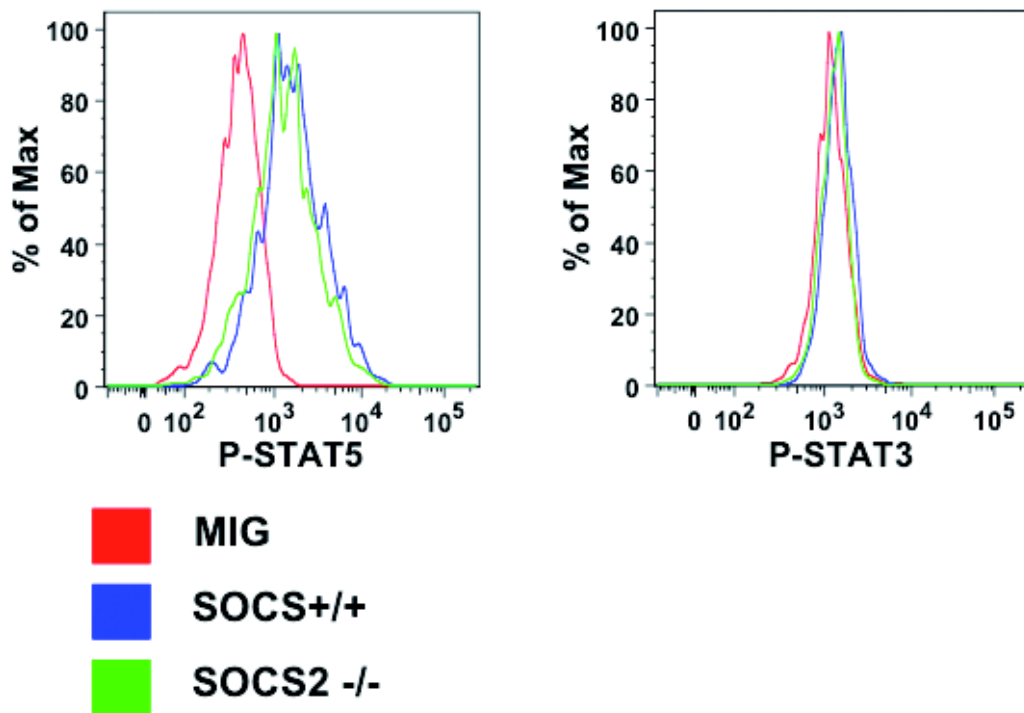


Supplementary Figure 1. Hematopoietic reconstitution in secondary bone marrow recipients. Repopulation to peripheral blood is shown 4 and 18 weeks after transplantation, as the percentage of donor cells compared to the total amount of donor and competitor cells. Bars indicating lineage distribution within the donor cell population.



Supplementary Figure 2. Expression of the *Socs* family genes in sorted CMPs from *Socs2^{+/+}* and *Socs2^{-/-}* mice. Expression is relative to *Actb* and compared to the expression of each *Socs* family member in *Socs2^{+/+}* cells.



Supplementary Figure 3. Intracellular flow cytometric analysis of phosphorylated STAT5 and STAT3 48 hours after transduction of C-kit enriched cells with *BCR/ABL1* or empty MIG control vector. The histograms show the phosphorylation in GFP⁺ cells.