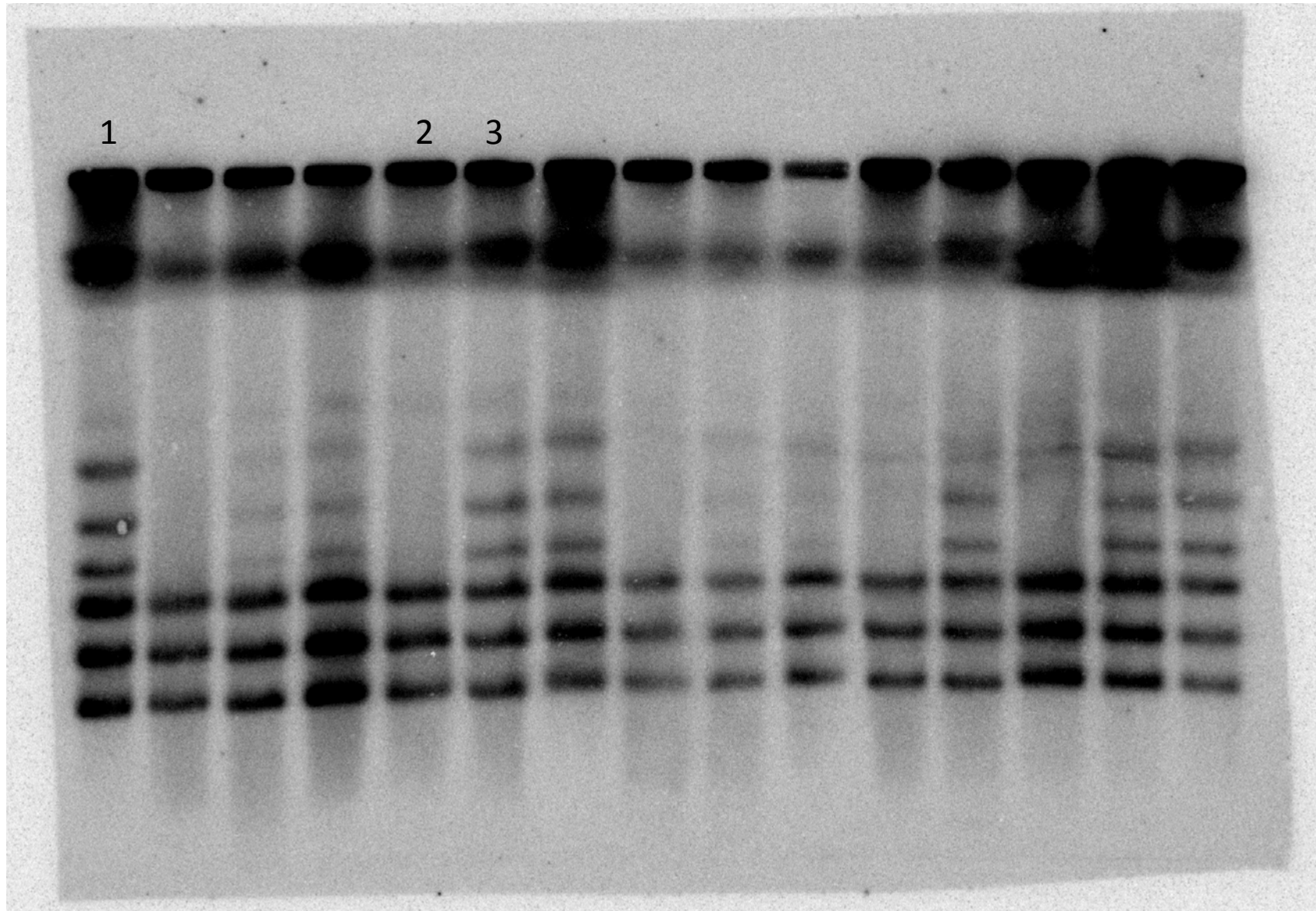
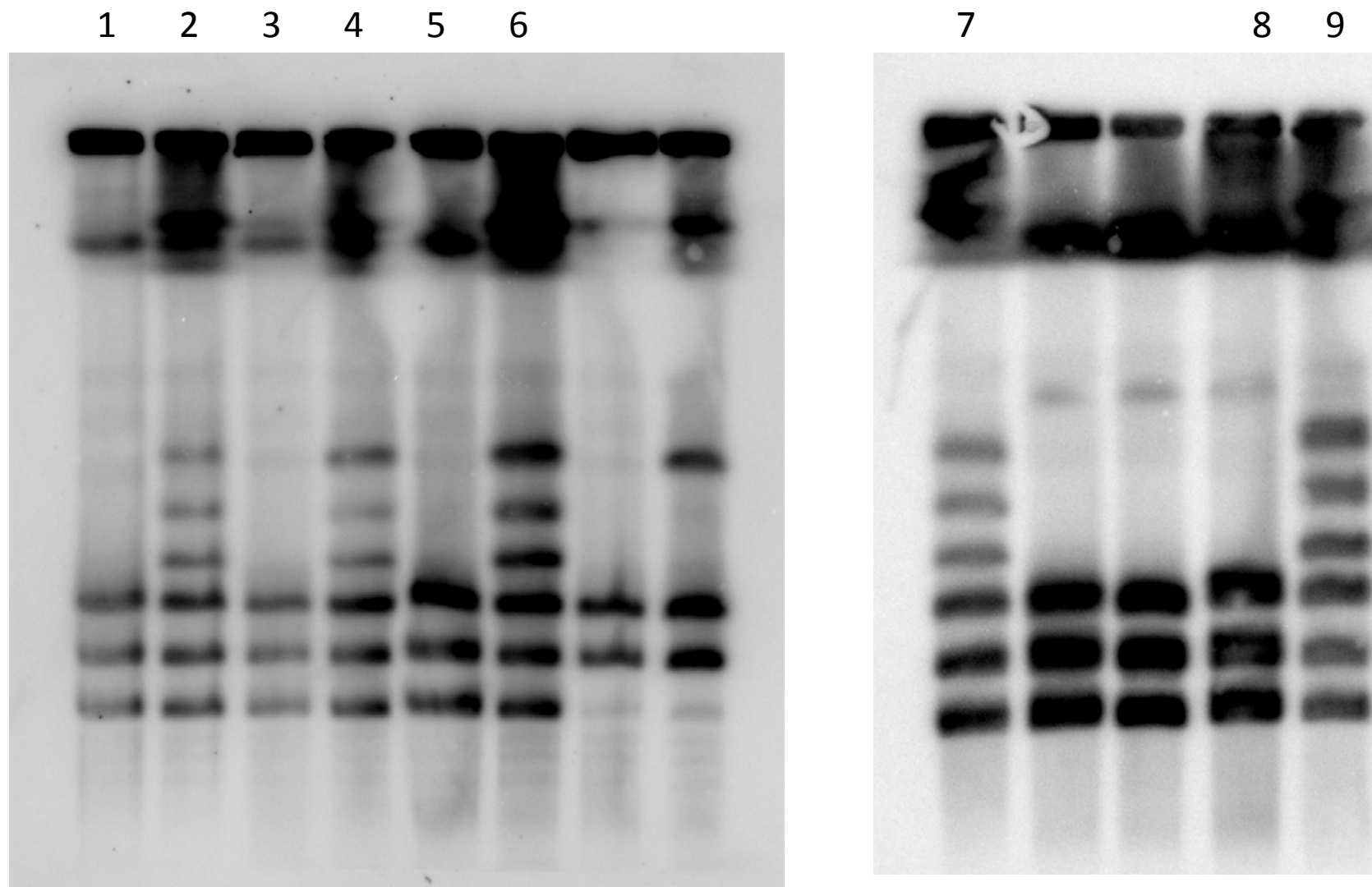


Fig.2A



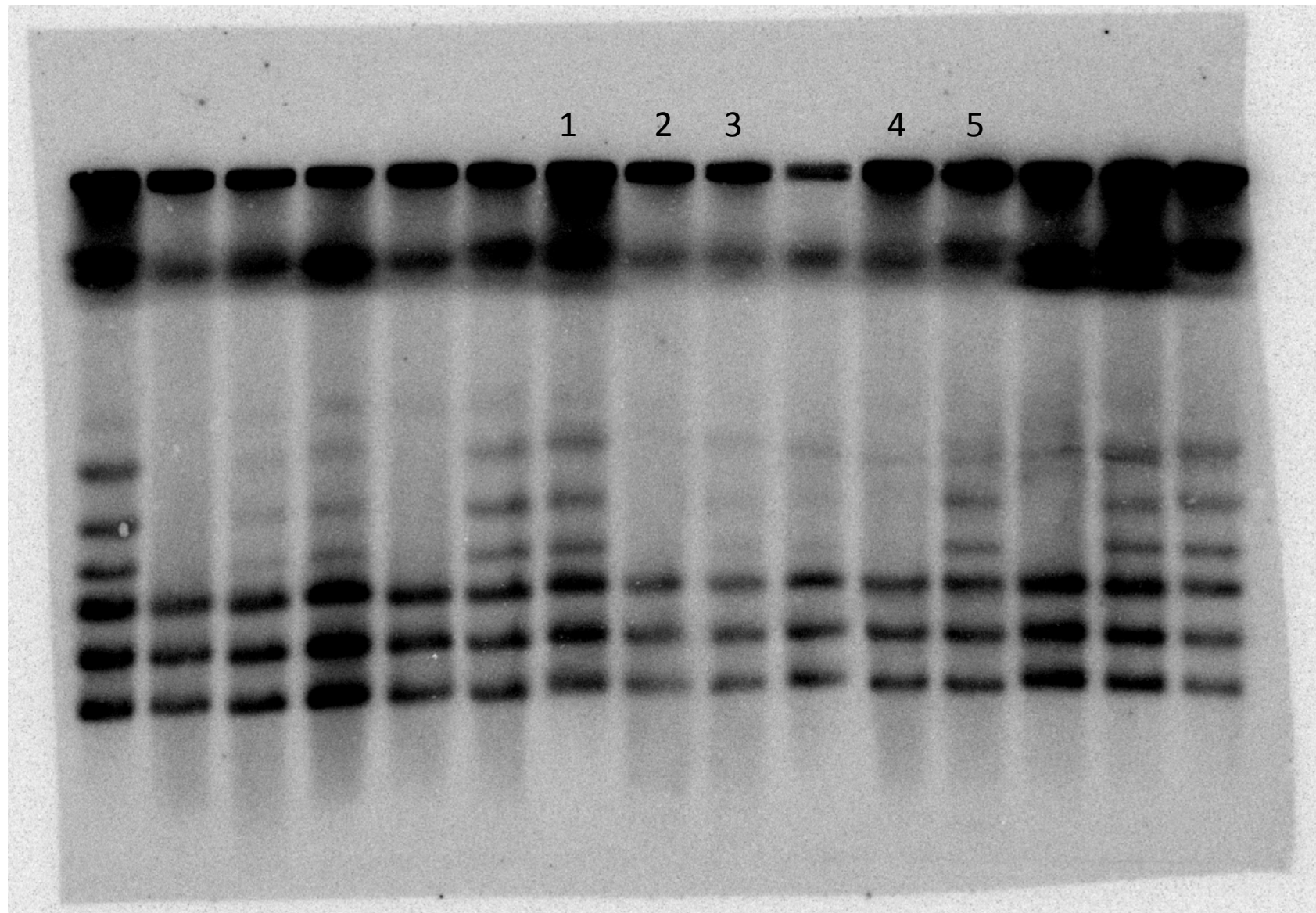
1- *taz1* Δ G1, 2- *ctp1* Δ *taz1* Δ S/G2, 3-*ctp1* Δ *taz1* Δ G1

Fig.2B



1- *taz1* Δ S/G2, 2- *taz1* Δ G1, 3- *dna2-c2 taz1* Δ S/G2 25°C , 4 -*dna2-c2 taz1* Δ G1 25°C,
5- *dna2-c2 taz1* Δ S/G2 30°C , 6 -*dna2-c2 taz1* Δ G1 30°C
7- *taz1* Δ G1, 8- *exo1* Δ *taz1* Δ S/G2 , 9- *exo1* Δ *taz1* Δ G1

Fig.2C



1- *rap1* Δ G1, 2- *nbs1* Δ *rap1* Δ S/G2, 3- *nbs1* Δ *rap1* Δ G1,
4- *ctp1* Δ *rap1* Δ S/G2, 5- *ctp1* Δ *rap1* Δ G1