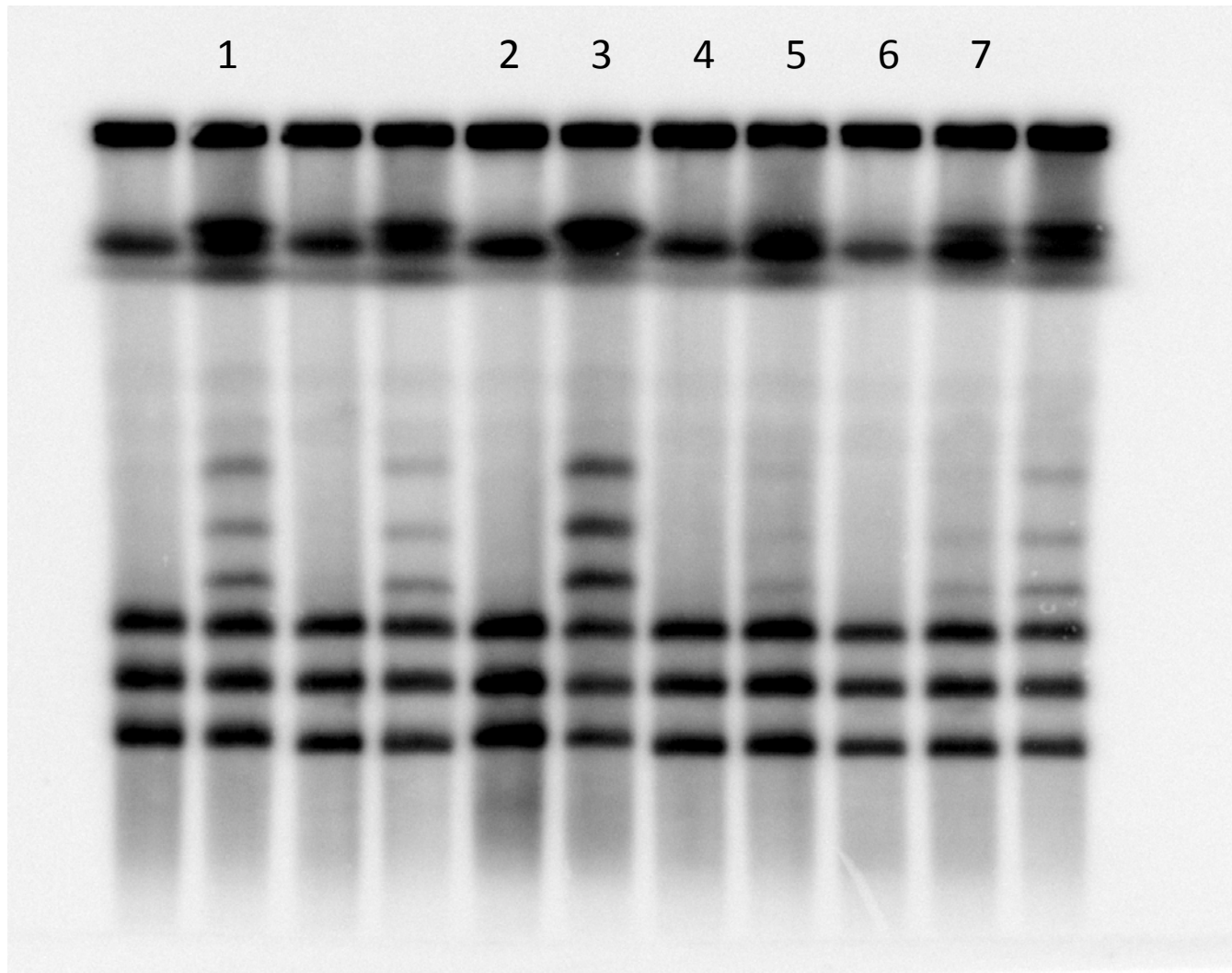
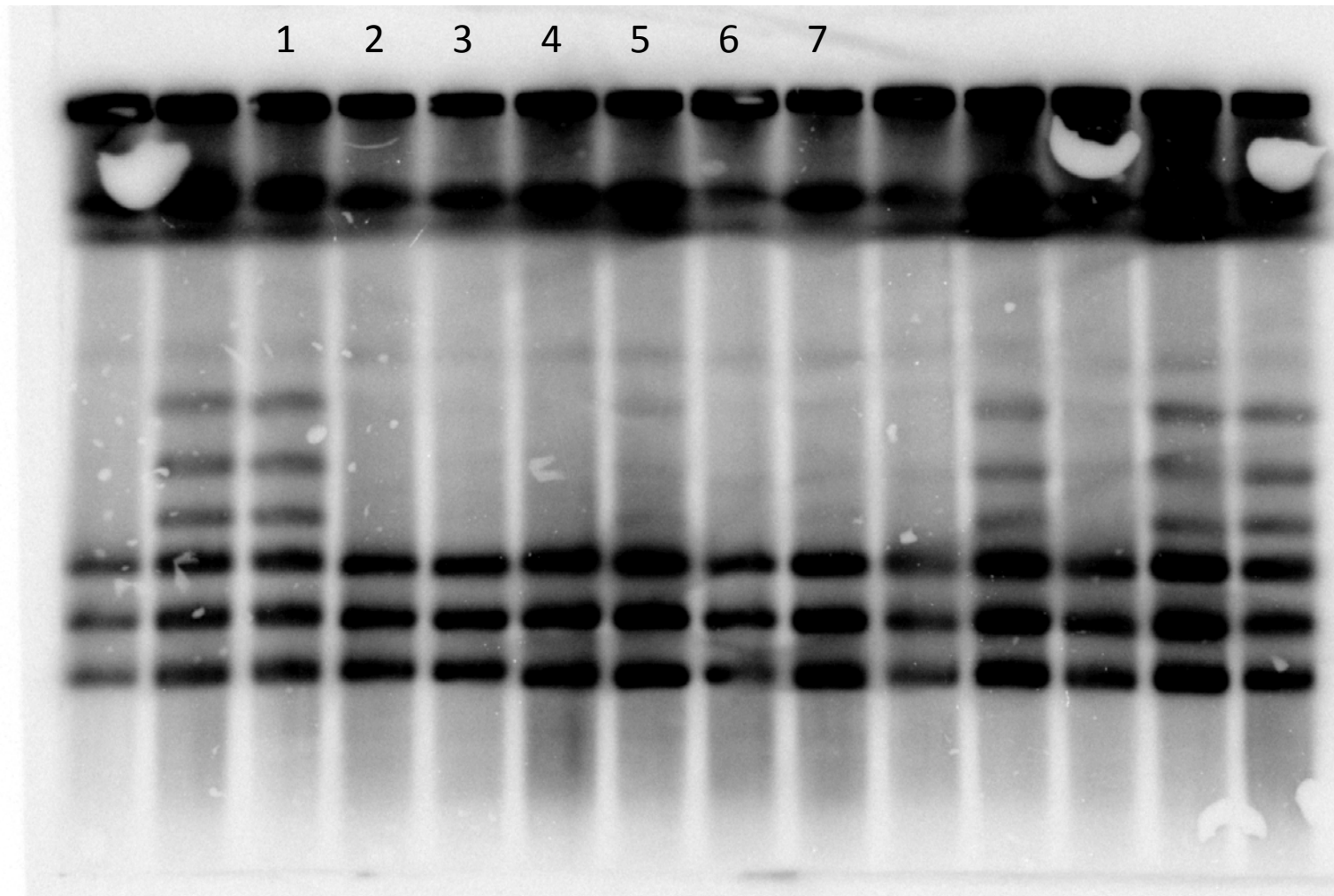


Fig.4A



1- *taz1* Δ G1, 2- *rad32-D65N taz1* Δ S/G2, 3- *rad32-D65N taz1* Δ G1, 4- *rad32-H68S* Δ *taz1* Δ S/G2, 5- *rad32-H68S* Δ *taz1* Δ G1, 6- *rad32-H134S taz1* Δ S/G2, 7- *rad32-H134S taz1* Δ G1

Fig.4B



1- *taz1Δ* G1, 2- *rad32Δtaz1Δ* S/G2, 3- *rad32Δtaz1Δ* G1, 4- *rad32-L77K taz1Δ* S/G2,
5- *rad32-L77K taz1Δ* G1, 6- *rad32-L154D taz1Δ*, 7- *rad32-L154D taz1Δ* G1