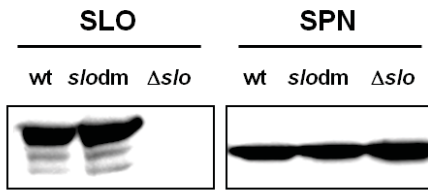
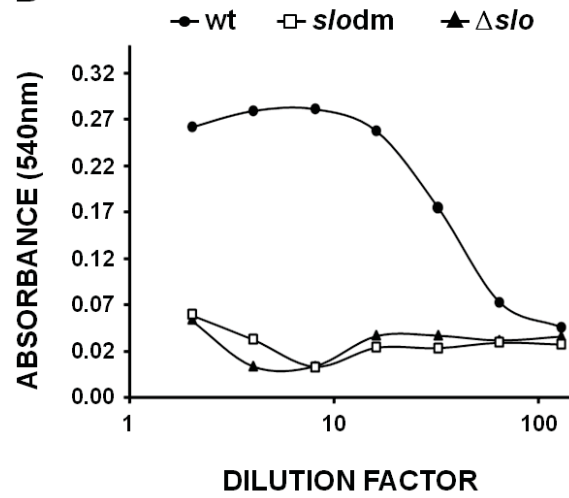


**A****B**

**FIG. S2** Phenotypic characterization of M1-3348 isogenic mutants. (A) Western blot analysis of secreted SLO and NAD-glycohydrolase (SPN) in the culture medium of 3348 strains expressing SLO (wt), SLOdm (*s/odm*) or not expressing the toxin ( $\Delta s/o$ ). (B) Hemolysis test performed on sheep blood cells using supernatants from GAS cultures belonging to 3348wt (wt), 3348-*s/odm* (*s/odm*) or 3348- $\Delta s/o$  ( $\Delta s/o$ ) strains.