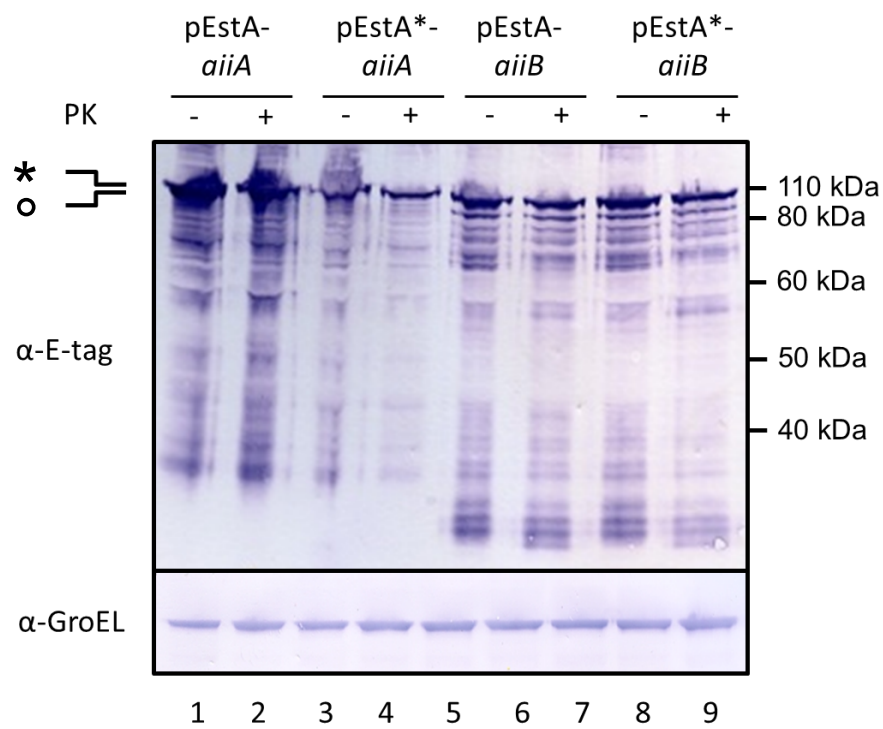
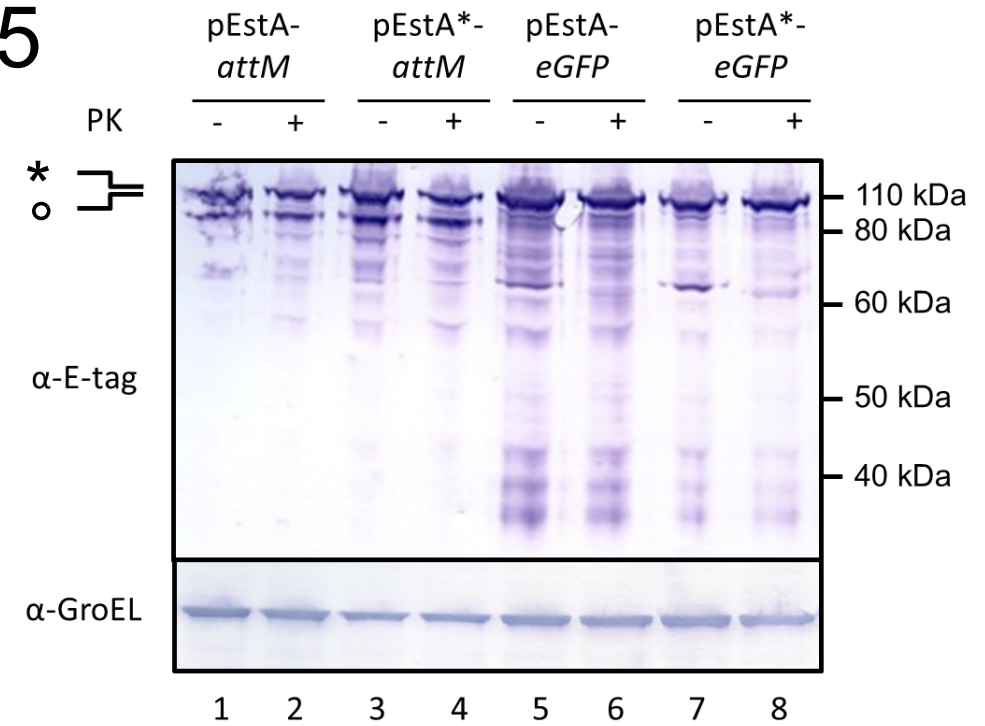


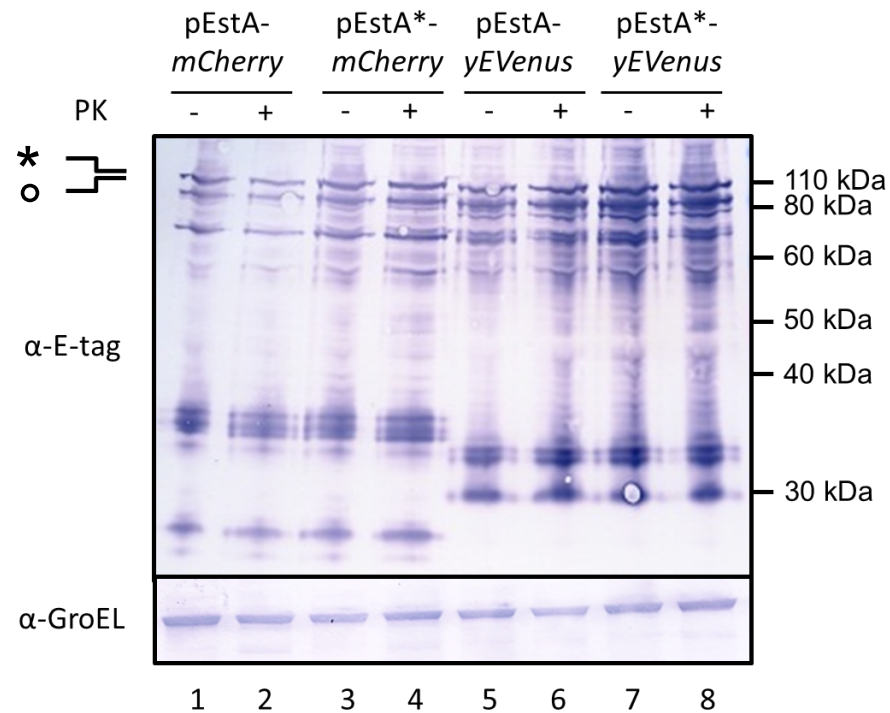
S4



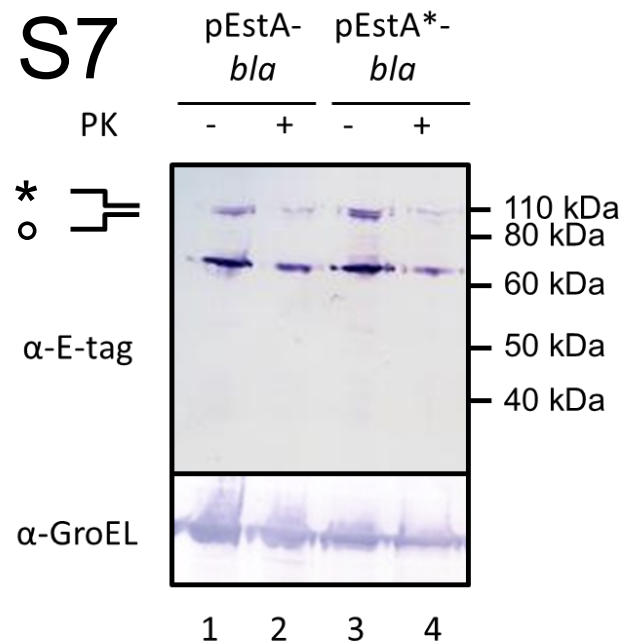
S5



S6



S7



Figures S4-S7: Proteinase K accessibility of fusion proteins from *P. stutzeri* A15 pEstA/pEstA*-*aiiA/aiiB/attM/eGFP/mCherry/yEVENus/bla*. Induced cells of *P. stutzeri* A15 pEstA/pEstA*-*aiiA/aiiB* (S4), pEstA/pEstA*-*attM/eGFP* (S5), pEstA/pEstA*-*mCherry/yEVENus* (S6) and pEstA/pEstA*-*bla* (S7) were treated with proteinase K (PK +) or mock-treated (PK -). Samples were analyzed with Western blot using anti-E-tag antibodies (α-E-tag). The band with the higher apparent molecular weight, containing the signal peptide, is indicated with a '*'. The band with the lower apparent molecular weight, without the signal peptide is indicated with an 'o'. Molecular weight markers are indicated at the side of the panels.