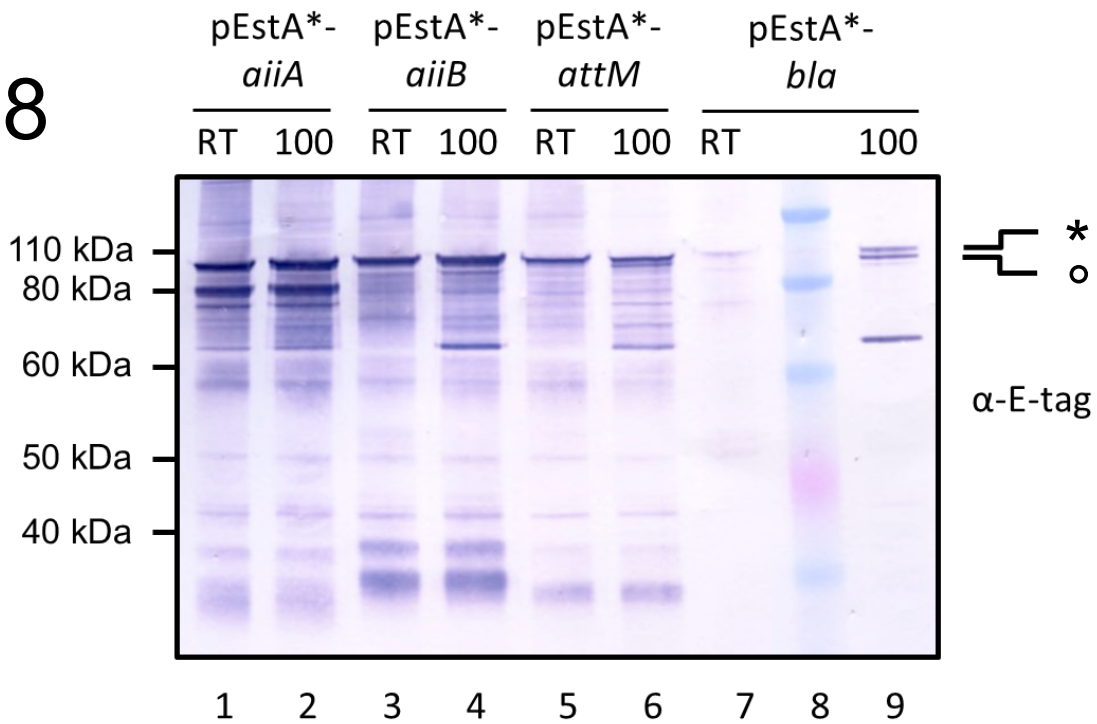
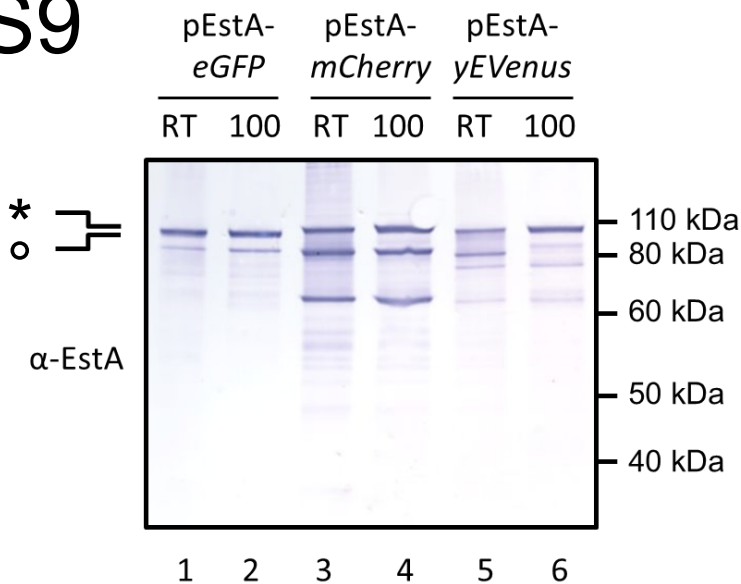


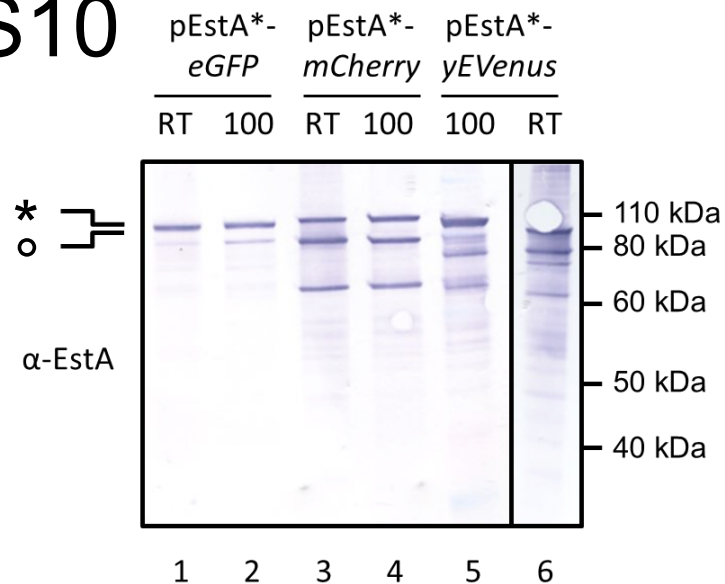
S8



S9



S10



Figures S8-S10: Heat modifiability analysis of proteins in the membrane fractions of *P. stutzeri* A15 pEstA*-*aIIA/aIIB/attM/bla/eGFP/mCherry/yEVENUS* and pEstA-*eGFP/mCherry/yEVENUS*. Fusion proteins in the membrane fractions of induced cells of *P. stutzeri* A15 pEstA*-*aIIA/aIIB/attM/bla* (S8), pEstA-*eGFP/mCherry/yEVENUS* (S9) and pEstA*-*eGFP/mCherry/yEVENUS* (S10) were tested for heat modifiability. SDS-PAGE samples were incubated at room temperature (RT) or 100°C and analyzed with Western blot using anti E-tag antibodies (α -E-tag) or anti-EstA serum (α -EstA). The band with the higher apparent molecular weight, containing the signal peptide, is indicated with a '*'. The band with the lower apparent molecular weight, without the signal peptide is indicated with an 'o'. Molecular weight markers are indicated at the side of the panels.