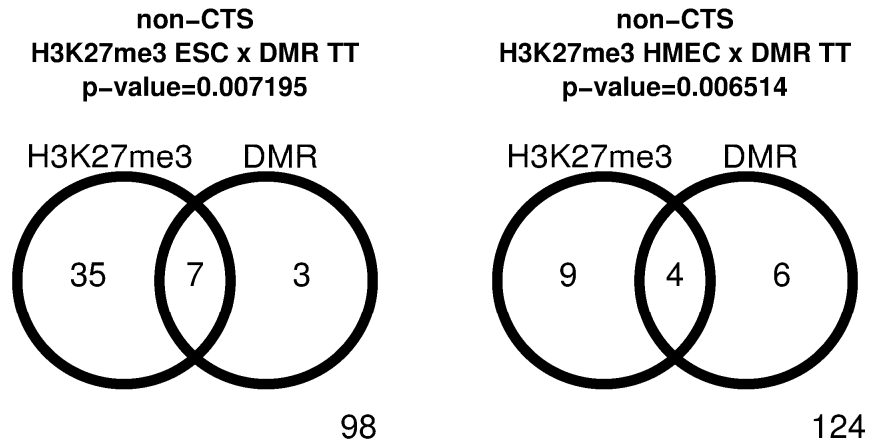


Figure S1



MicroRNA promoters hypermethylated in cancer are frequently occupied by polycomb specific H3K27me3 in normal cells. Left, Venn diagram showing the overlap between the non-CTS miRNA promoters occupied by H3K27me3 in ESC and those hypermethylated in tumor tissue samples (TT). Right, Venn diagram showing the overlap between the non-CTS miRNA promoters occupied by H3K27me3 in HMEC and those hypermethylated in TT. Both overlaps are highly significant (hypergeometric test).