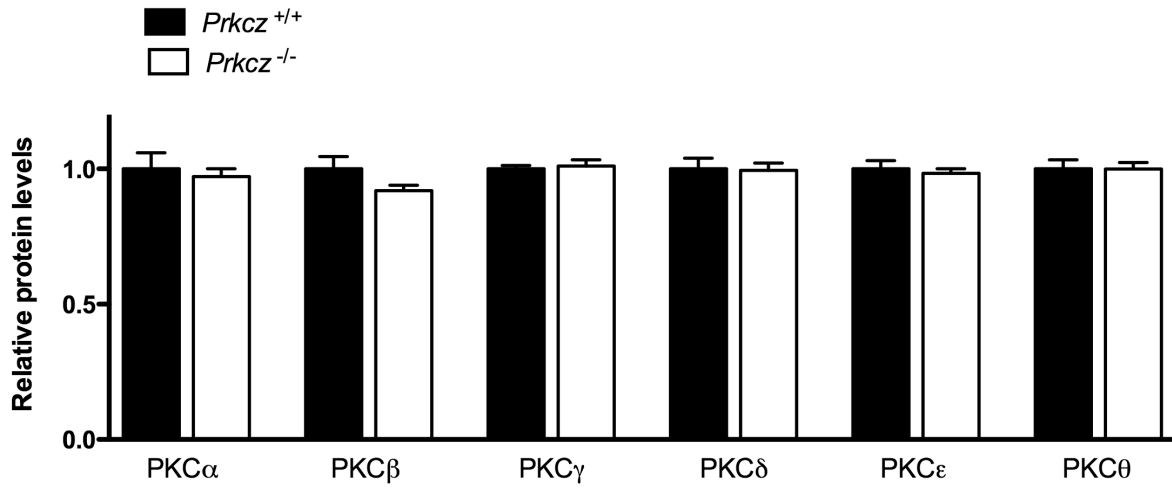
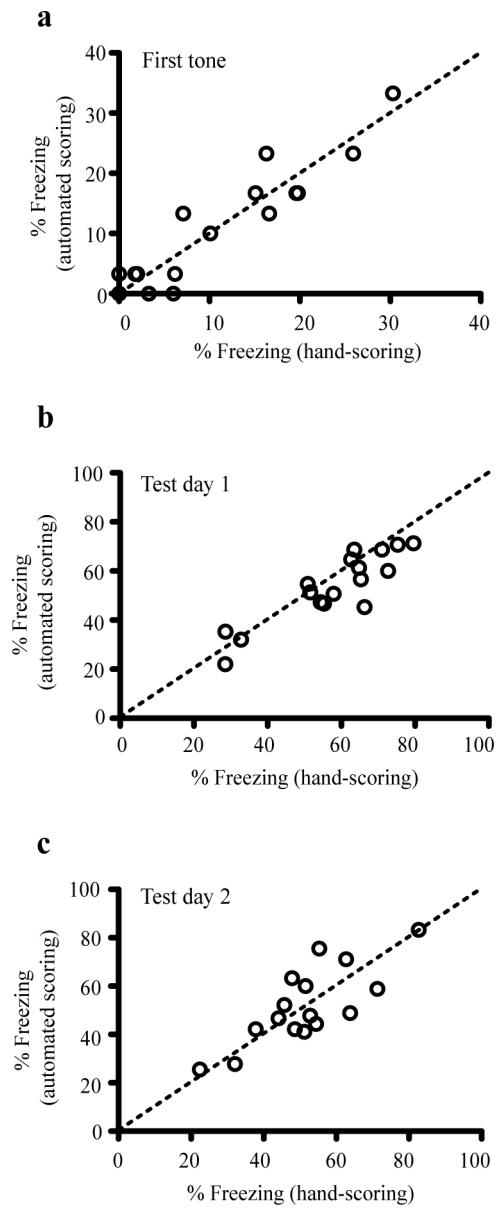


Guide to Supplementary Material:

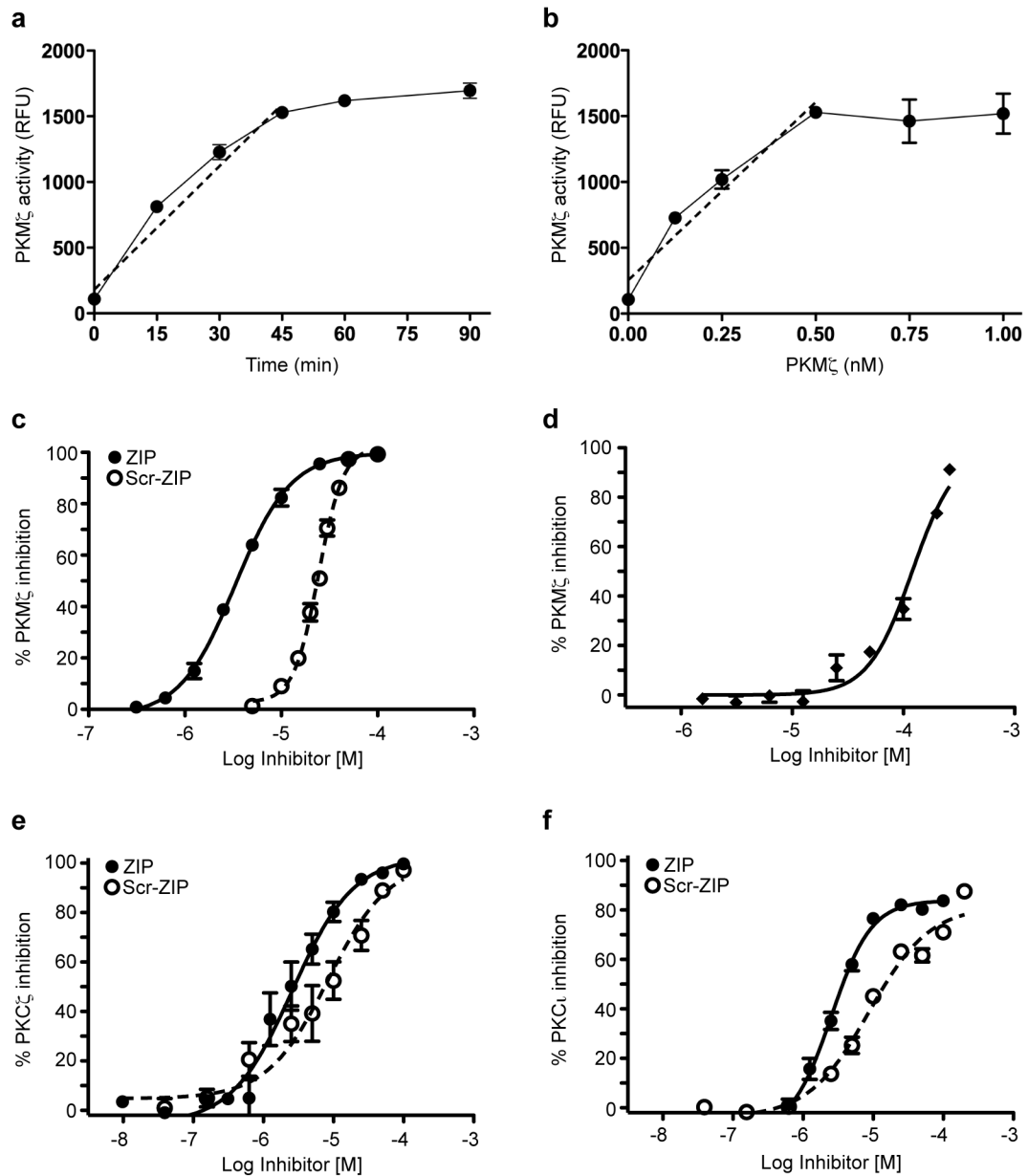
These pages contain Supplementary Figures 1-3.



Supplementary Fig. 1. PKC isozyme immunoreactivity in wild-type and *Prkcz*^{-/-} mouse forebrain. Results are expressed relative to the average of values in wild type samples; $n=3$ wild-type, $n=4$ *Prkcz*^{-/-}. Data is shown as mean + s.e.m.



Supplementary Fig. 2. Correlation of machine and hand scoring of freezing. For cued fear conditioning, the Freeze Monitor automated scoring program correlated well with hand scoring on **a**, the training day and **b,c**, the test days. Each circle represents data from one mouse. The dashed line represents a hypothetical 100% correlation between automated and hand scoring.



Supplementary Fig. 3. Inhibition of atypical PKC isozymes by ZIP and chelerythrine.

Kinase activity increased linearly with **a**, time up to 45 min of incubation and **b**, concentration up to 0.5 nM PKM ζ . **c**, ZIP and scrambled ZIP inhibited PKM ζ with ~ 7 -fold difference in potency. **d**, Chelerythrine, assayed in the absence of DTT, inhibited PKM ζ only at concentrations ≥ 30 μ M. ZIP and scrambled ZIP also inhibited **e**, PKC ζ and **f**, PKC ι with similar potencies. Data shown are mean \pm s.e.m.; $n=3$ for all groups.