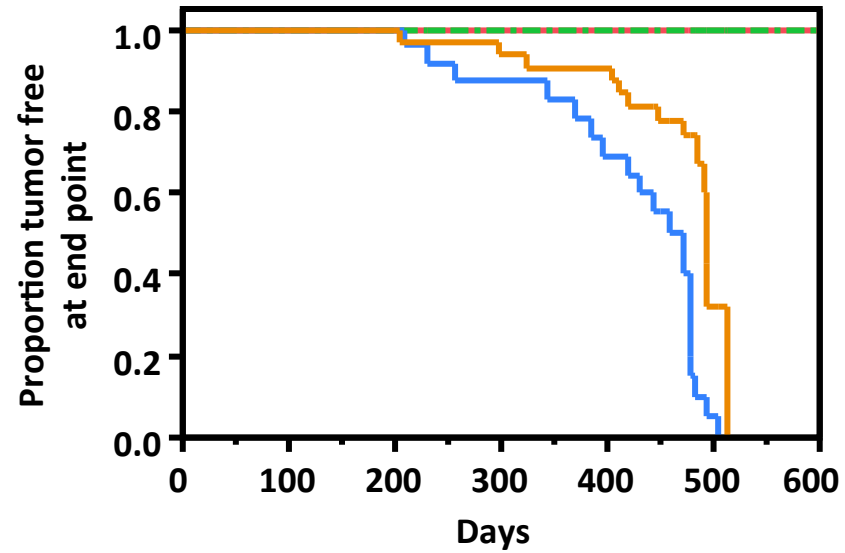
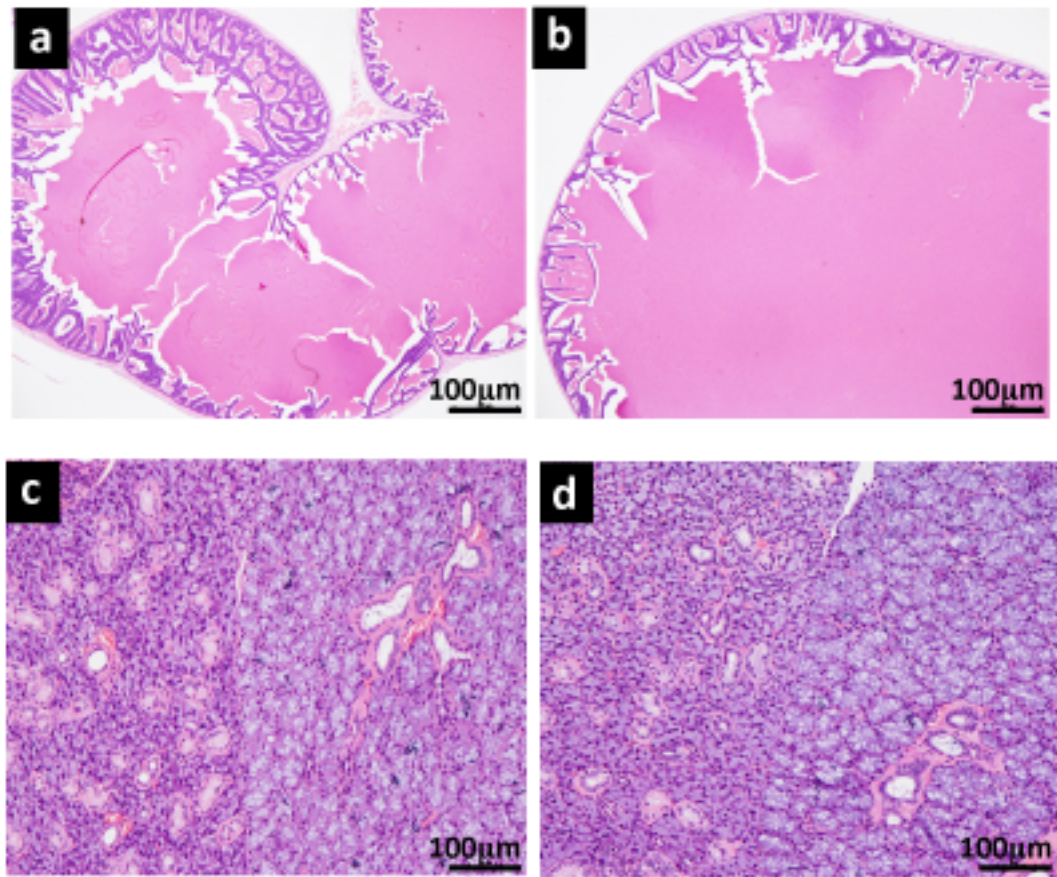


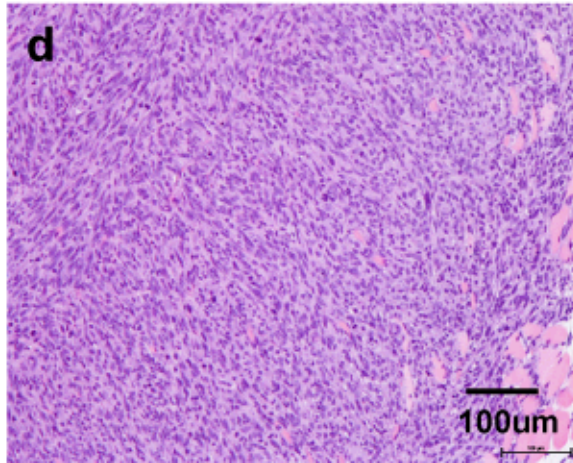
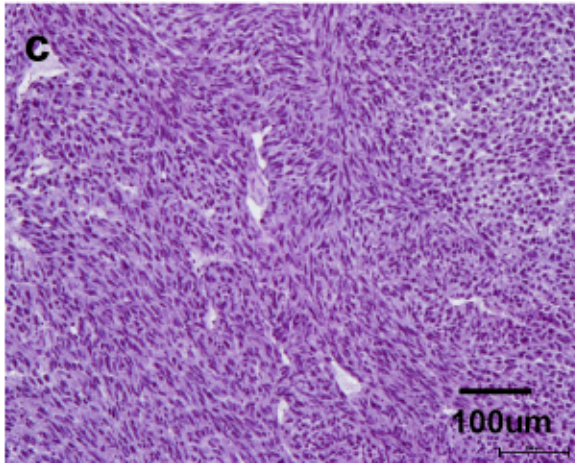
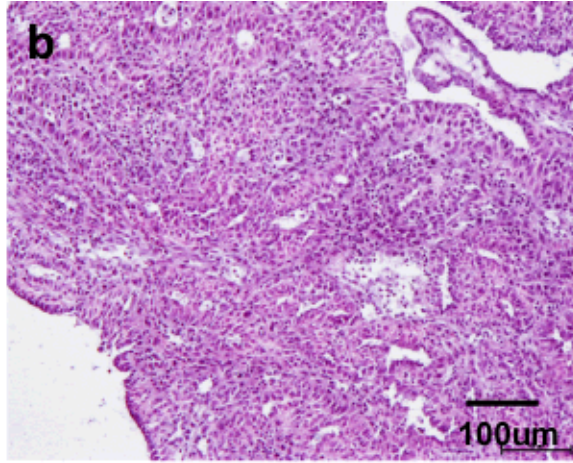
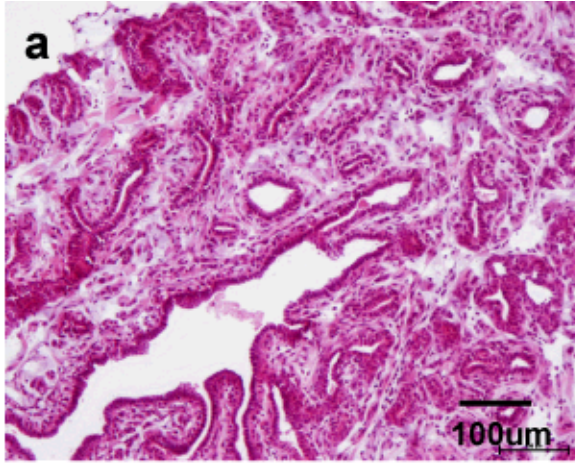
Supplementary Fig. 1



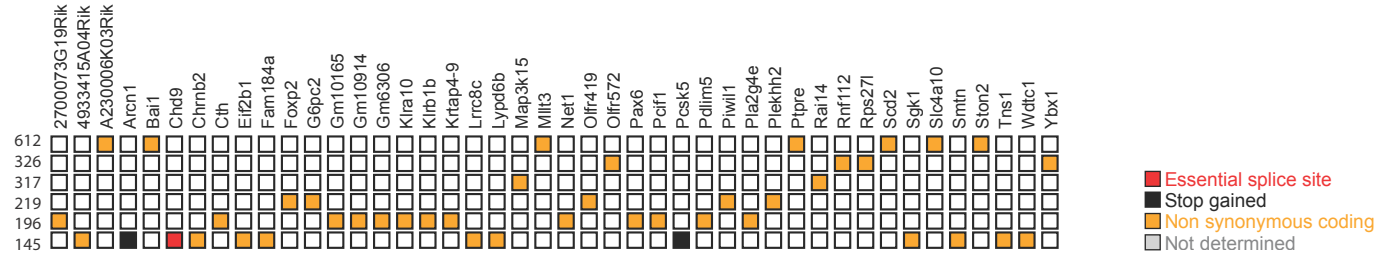
	Median tumor incidence (Days)
MMTV-Cre (n = 9)	—
<i>PIK3CA</i> ^{<i>e20mwt/+</i>} (n = 22)	—
<i>PIK3CA</i> ^{<i>e20H1047R/+</i>} (multiparous; n = 25)	465
<i>PIK3CA</i> ^{<i>e20H1047R/+</i>} (nulliparous; n = 32)	492



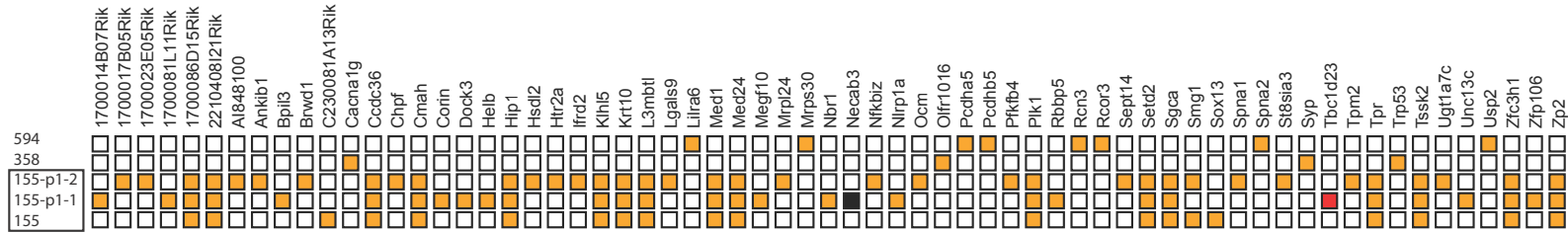
Supplementary Fig. 3



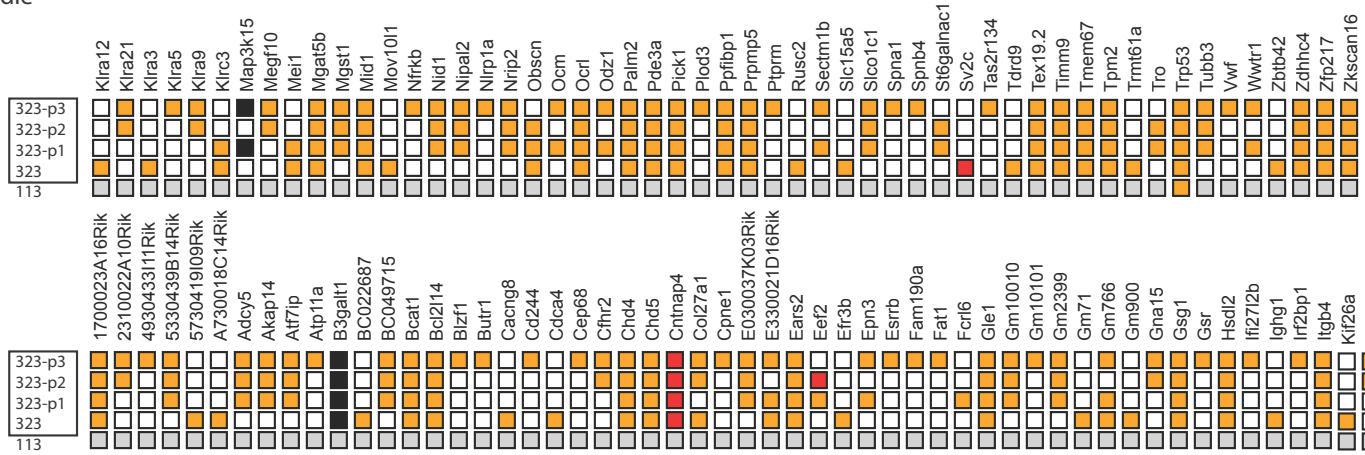
a) Fibroadenoma

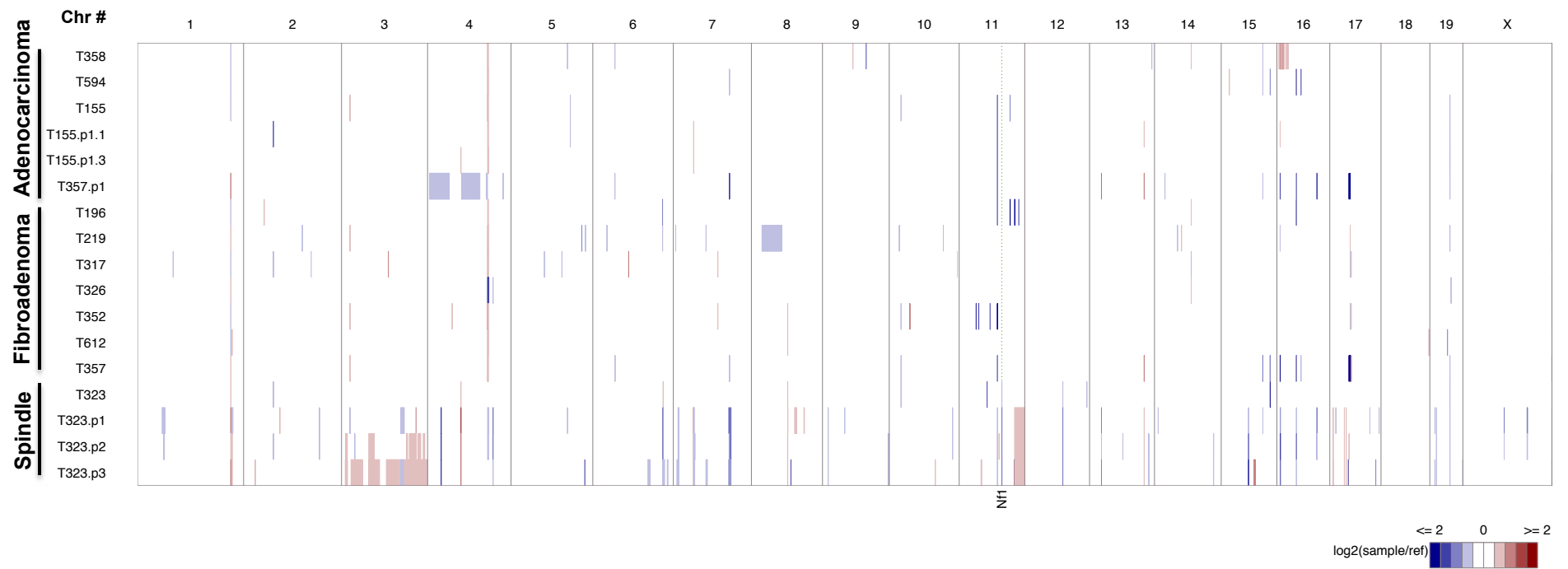


b) Adenocarcinoma



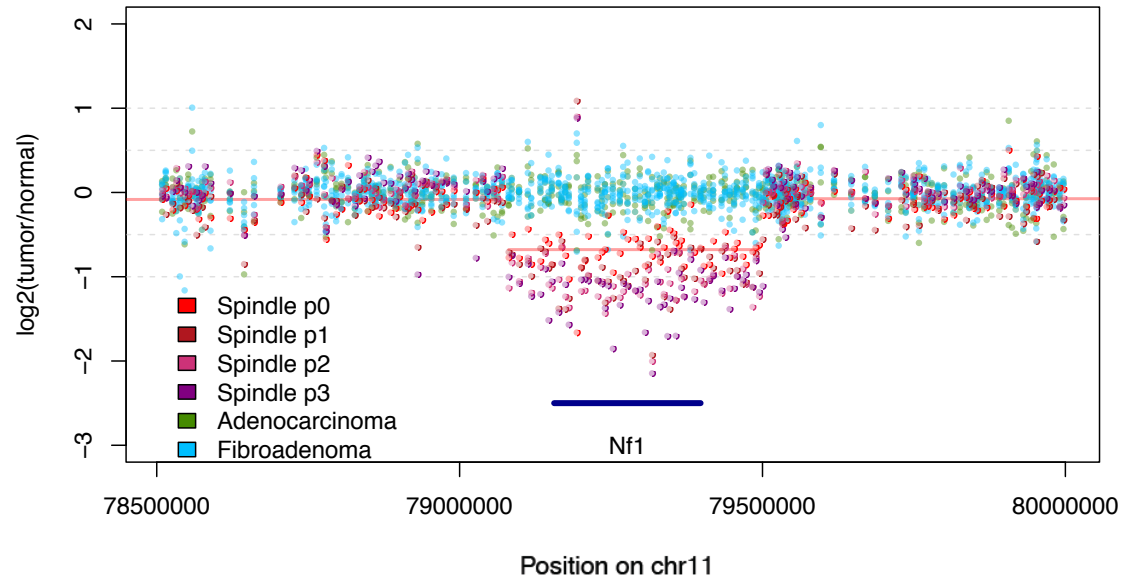
c) Spindle



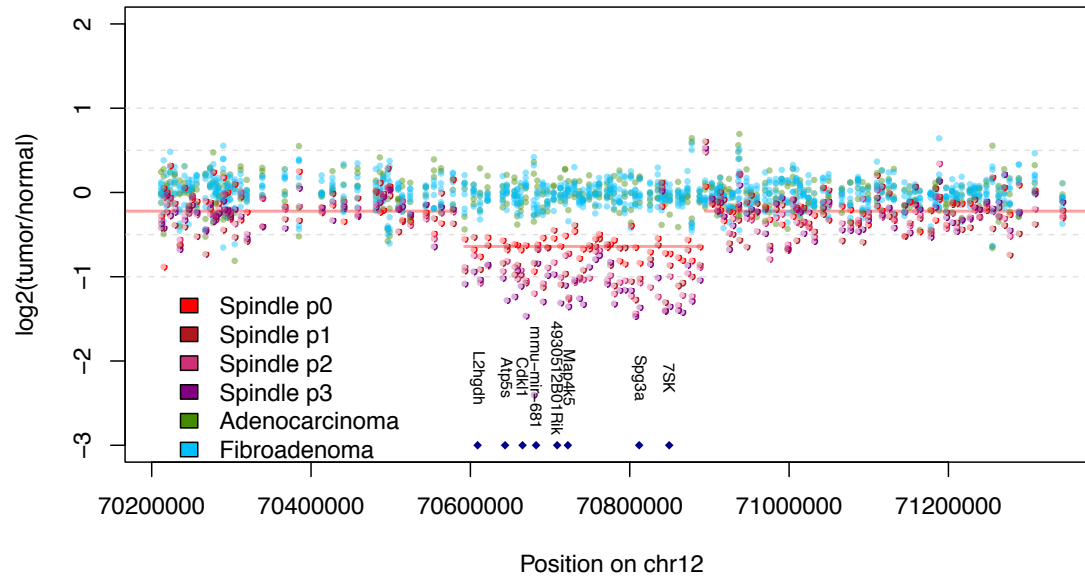


Supplementary Fig. 6

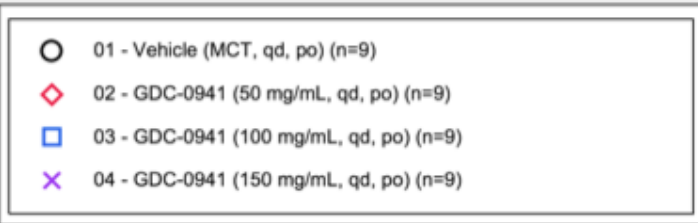
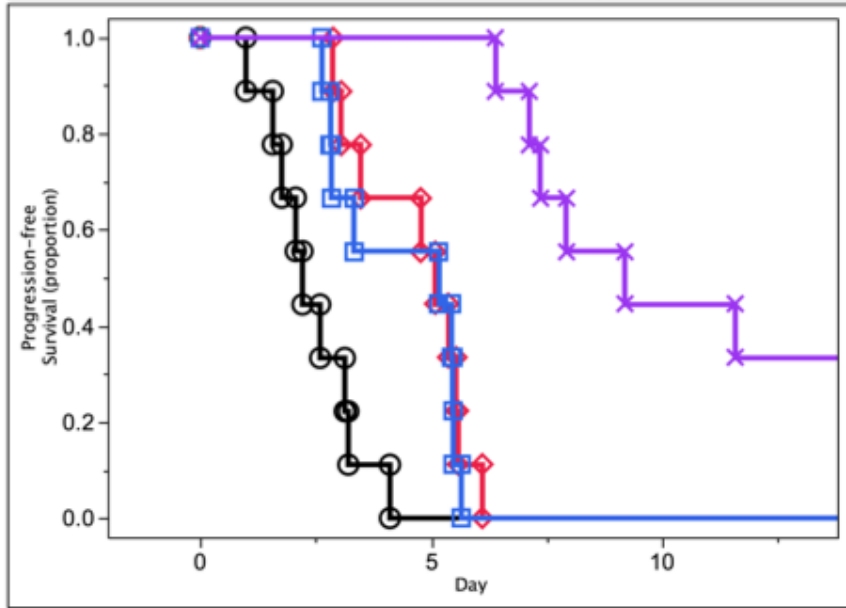
a



b



Kaplan-Meier Analysis of Time to Progression (Days)



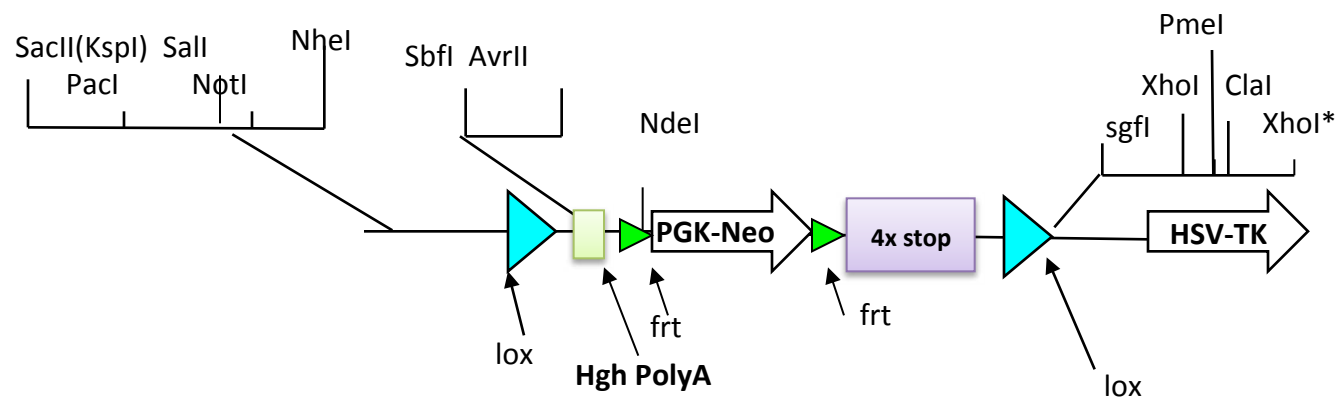
Quantiles					
Group	Median Time	Lower 95%	Upper 95%	25% Failures	75% Failures
01 - Vehicle (MCT, qd, po)	2.2	0.9891	3.2032	1.8	3.1
02 - GDC-0941 (50 mg/mL, qd, po)	5.1	2.8634	5.5825	3.5	5.5
03 - GDC-0941 (100 mg/mL, qd, po)	5.2	2.6332	5.4719	2.8	5.5
04 - GDC-0941 (150 mg/mL, qd, po)	9.2	6.393	.	7.4	.
Combined	5.1	3.1269	5.5309	2.8	6.1

Log-Rank Tests for Differences in TTP Distributions		
Group 1	Group 2	Log-Rank p-value
01 - Vehicle (MCT, qd, po)	02 - GDC-0941 (50 mg/mL, qd, po)	0.0008*
01 - Vehicle (MCT, qd, po)	03 - GDC-0941 (100 mg/mL, qd, po)	0.0034*
01 - Vehicle (MCT, qd, po)	04 - GDC-0941 (150 mg/mL, qd, po)	<.0001*

Note: p-values not adjusted for multiple comparisons.

Grp.Name	Vol Last Day	%TGI days	AUC/Day %TGI (lower,upper)	TTP 2X	TTP 5X	PR	CR	STI	%BW Last Day	Max %BW	Max %BW Day	AUC/Day (lower,upper)
Vehicle (MCT, qd, po)	>3000	11	0 (0, 0)	3	7	0	0	9	5.19	5.19	13	892 (677, 1175)
GDC-0941 (50 mg/mL, qd, po)	1780	13	35 (4, 58)	5.5	10	0	0	9	3.21	3.21	13	576 (408, 799)
GDC-0941 (100 mg/mL, qd, po)	1536	13	41 (14, 62)	5	11	0	0	9	1.87	-1.99	5	530 (370, 734)
GDC-0941 (150 mg/mL, qd, po)	612	13	85 (72, 93)	9.5	NA	0	0	9	-7.16	-7.23	8	137 (63, 233)

TGI - tumor growth inhibition; TTP - time to progression; PR - Partial response; CR - complete response; STI – study tumor incidence ; AUC- Area under the fitted curve; BW – body weight



Supplementary Fig. 9