

## Supplemental Figure Legends

### **Supplemental Figure 1.** Frequencies of cytokine-secreting CD8 T cells. **(A-B)**

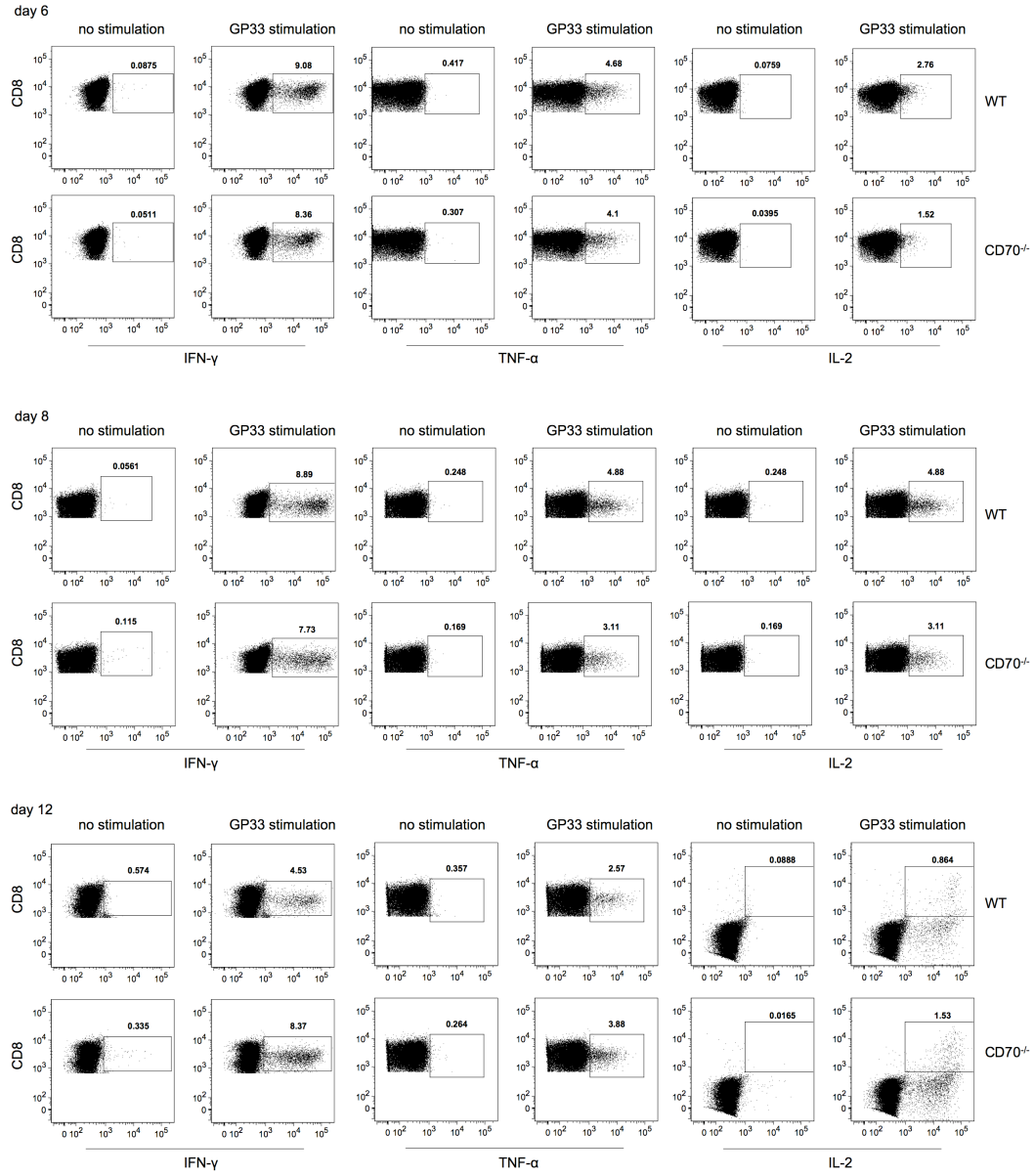
Splenocytes were restimulated *in vitro* with GP33 peptide on the indicated days of LCMV infection and evaluated for cytokine production by intracellular staining. A representative staining **(A)** or average frequencies with mean  $\pm$  SEM **(B)** of IFN- $\gamma$ , TNF- $\alpha$ , and IL-2-producing CD8<sup>+</sup> T cells are shown.

### **Supplemental Figure 2.** Frequencies of cytokine-secreting CD4 T cells. **(A)**

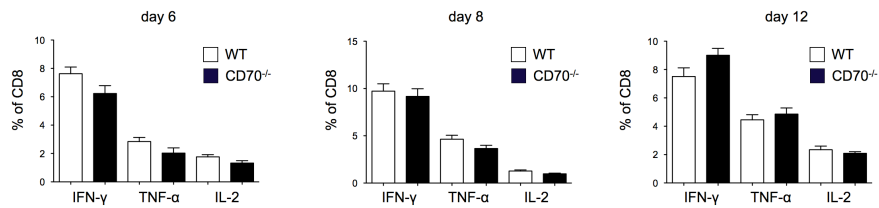
Splenocytes were restimulated *in vitro* with GP61 peptide on the indicated days of LCMV infection and evaluated for cytokine production by intracellular staining. A representative staining of IFN- $\gamma$ , TNF- $\alpha$ , and IL-2-producing CD4<sup>+</sup> T cells is shown.

# Supplemental Figure 1

A



B



## Supplemental Figure 2

A

